

Model No :: **20010LEDDMGLP-BRZ/RFR**  
Name :: Bermuda



Project Name :: \_\_\_\_\_  
Location :: \_\_\_\_\_  
Type :: \_\_\_\_\_  
Quantity :: \_\_\_\_\_  
Notes :: \_\_\_\_\_

#### Product Information

Product ID :: 20010  
UPC Code :: 6.41594E+11  
Mounting Type :: Wall  
Finish :: Bronze  
Diffuser :: Ribbed Frosted  
Alt. Finishes :: Black (BL); Bronze (BRZ); Satin (SAT);  
White (WH); White (WHT)  
Alt. Diffusers :: Ribbed Frosted (RFR)

#### Product Dimensions

Fixture	Canopy
Length ::	Length :: 4.75
Width :: 7	Width :: 4.75
Diameter ::	Diameter ::
Extension :: 5	Height :: 0.5
Height :: 10.5	
Overall Height ::	

#### Technical Specifications

##### Qualifications

Location Rating :: Wet  
Certification :: UL Listed (US/Canada)  
IES File ::  
JA8 Compliant :: Yes  
Energy Star :: No  
ADA Compliant :: No  
Marine Grade :: Yes  
Emergency Lighting :: No  
Warranty :: 3 Year Limited

##### Specifications

Frame Material :: Aluminum  
Diffuser Material :: Glass  
Voltage :: 120v  
Lamping Type :: A-19 (RLED)  
Lamping Base :: E-26  
Lamp Quantity :: 1  
Lamp Wattage :: 10 W  
Total Wattage :: 10 W  
Lamps Included :: Yes  
J-Box Type :: Standard

##### Photometrics

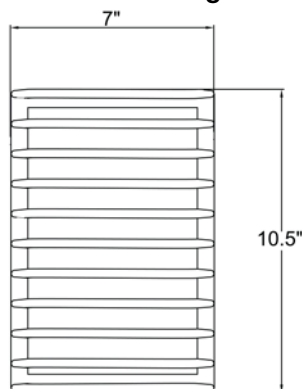
CCT :: 3000 K  
CRI :: 90  
Wattage :: 10 W  
Nominal Lumens :: 800  
Delivered Lumens :: 0

##### Recommended Dimmers

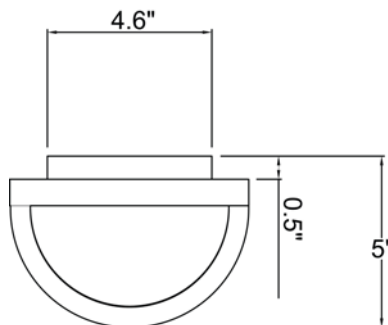
(ELV) LUTRON Skylark SELV-300P; (MLV) COOPER Aspire 9530SW; (TRIAC) LEGRAND Titan CD703-PW

Additional Items :: 0

Line Drawing #1



Line Drawing #2



IES File

Image Not Available

Toll Free 800-828-5483 • [www.AccessLighting.com](http://www.AccessLighting.com)

14410 Myford Road, Irvine, CA 92606

The information provided is subject to change without notice. ©2020 Access Lighting Corporation. All Rights Reserved  
Rev. 202105 Filename:: 20010LEDDMGLP-BRZ\_RFR.pdf

