

Model No :: **20010MG-BRZ/RFR**
Name :: Bermuda



Project Name :: _____
Location :: _____
Type :: _____
Quantity :: _____
Notes :: _____

Product Information

Product ID :: 20010
UPC Code :: 6.41594E+11
Mounting Type :: Wall
Finish :: Bronze
Diffuser :: Ribbed Frosted
Alt. Finishes :: Black (BL); Bronze (BRZ); Satin (SAT);
White (WH); White (WHT)
Alt. Diffusers :: Ribbed Frosted (RFR)

Product Dimensions

| Fixture | Canopy |
|-------------------|----------------|
| Length :: | Length :: 4.75 |
| Width :: 7 | Width :: 4.75 |
| Diameter :: | Diameter :: |
| Extension :: 5 | Height :: 0.5 |
| Height :: 10.5 | |
| Overall Height :: | |

Technical Specifications

Qualifications

Location Rating :: Wet
Certification :: UL Listed (US/Canada)
IES File ::
JA8 Compliant :: No
Energy Star :: No
ADA Compliant :: No
Marine Grade :: Yes
Emergency Lighting :: No
Warranty :: 3 Year Limited

Specifications

Frame Material :: Aluminum
Diffuser Material :: Glass
Voltage :: 120v
Lamping Type :: A-19 (INC)
Lamping Base :: E-26
Lamp Quantity :: 1
Lamp Wattage :: 60 W
Total Wattage :: 60 W
Lamps Included :: No
J-Box Type :: Standard

Photometrics

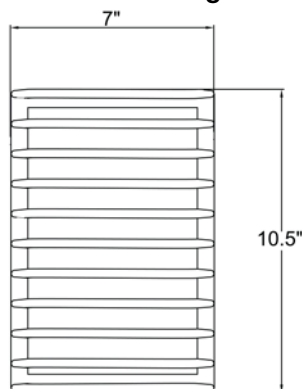
CCT :: 0
CRI :: 0
Wattage :: 60 W
Nominal Lumens :: 0
Delivered Lumens :: 0

Recommended Dimmers

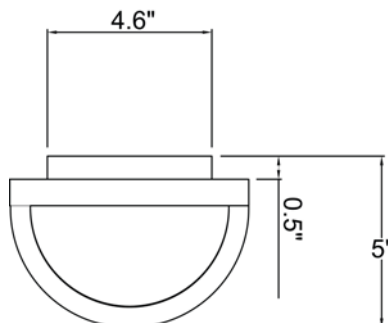
(TRIAC) Any Standard Dimmer

Additional Items :: 0

Line Drawing #1



Line Drawing #2



IES File

Image Not Available

Toll Free 800-828-5483 • www.AccessLighting.com

14410 Myford Road, Irvine, CA 92606

The information provided is subject to change without notice. ©2020 Access Lighting Corporation. All Rights Reserved
Rev. 202105 Filename:: 20010MG-BRZ_RFR.pdf

