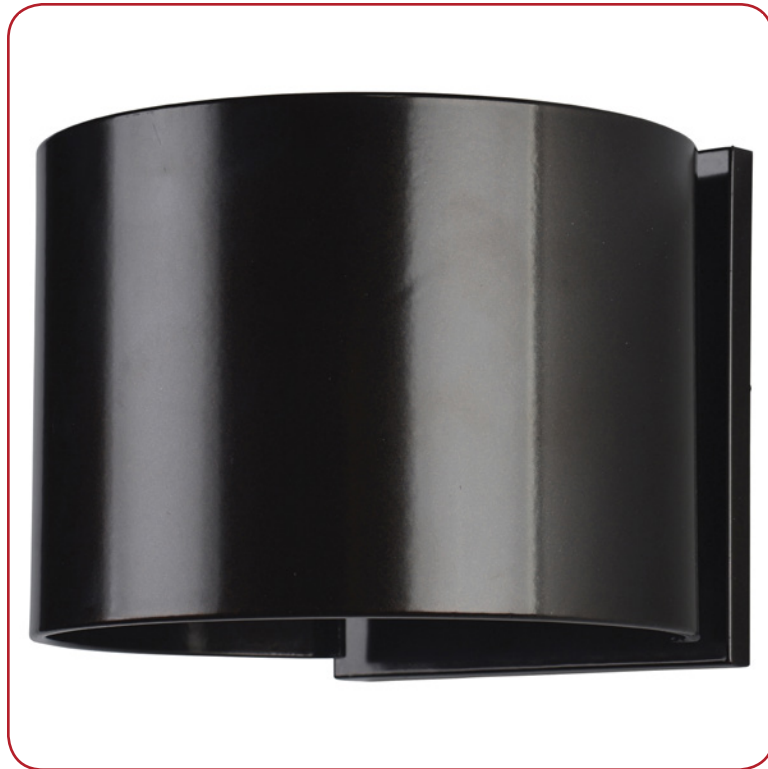


Model No :: **20399LEDMGRND-BRZ**  
Name :: Curve



Project Name :: \_\_\_\_\_  
Location :: \_\_\_\_\_  
Type :: \_\_\_\_\_  
Quantity :: \_\_\_\_\_  
Notes :: \_\_\_\_\_

#### Product Information

Product ID :: 20399(Round)  
UPC Code :: 6.41594E+11  
Mounting Type :: Wall  
Finish :: Bronze  
Diffuser :: 0  
Alt. Finishes :: Black (BL); Bronze (BRZ); Satin (SAT);  
White (WH)  
Alt. Diffusers :: 0

#### Product Dimensions

Fixture	Canopy
Length ::	Length :: 0.5
Width :: 6	Width :: 5
Diameter ::	Diameter ::
Extension :: 5.5	Height :: 5
Height :: 5	
Overall Height ::	

#### Technical Specifications

##### Qualifications

Location Rating :: Wet  
Certification :: UL Listed (US/Canada)  
IES File ::  
JA8 Compliant :: Yes  
Energy Star :: No  
ADA Compliant :: No  
Marine Grade :: Yes  
Emergency Lighting :: No  
Warranty :: 3 Year Limited

##### Specifications

Frame Material :: Aluminum  
Diffuser Material :: 0  
Voltage :: 120v  
Lamping Type :: LED SSL  
(DLED)  
Lamping Base :: SSL  
Lamp Quantity :: 2  
Lamp Wattage :: 3 W  
Total Wattage :: 6 W  
Lamps Included :: Yes  
J-Box Type :: Standard

##### Photometrics

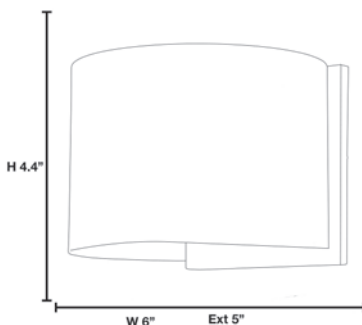
CCT :: 3000 K  
CRI :: 80  
Wattage :: 6 W  
Nominal  
Lumens :: 480  
Delivered  
Lumens :: 312

##### Recommended Dimmers

0

Additional Items :: 0

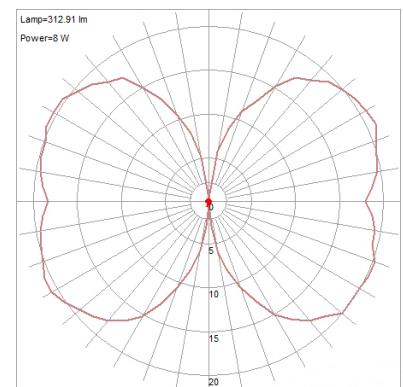
#### Line Drawing #1



#### Line Drawing #2

Image Not Available

#### IES File



Toll Free 800-828-5483 • [www.AccessLighting.com](http://www.AccessLighting.com)

14410 Myford Road, Irvine, CA 92606

The information provided is subject to change without notice. ©2020 Access Lighting Corporation. All Rights Reserved  
Rev. 202105 Filename:: 20399LEDMGRND-BRZ.pdf

