

Model No :: **20738-BS/OPL**
Name :: Iron



Project Name :: _____
Location :: _____
Type :: _____
Quantity :: _____
Notes :: _____

Product Information

Product ID :: 20738
UPC Code :: 6.41594E+11
Mounting Type :: Ceiling
Finish :: Brushed Steel
Diffuser :: Opal
Alt. Finishes :: Brushed Steel (BS)
Alt. Diffusers :: Opal (OPL)

Product Dimensions

Fixture	Canopy
Length ::	Length ::
Width ::	Width ::
Diameter :: 6.25	Diameter :: 4.75
Extension ::	Height :: 1
Height :: 12	
Overall Height :: 13-58	

Technical Specifications

Qualifications

Location Rating :: Dry
Certification :: UL Listed (US/Canada)
IES File ::
JA8 Compliant :: No
Energy Star :: No
ADA Compliant :: No
Marine Grade :: No
Emergency Lighting :: No
Warranty :: 1 Year Limited

Specifications

Frame Material :: Steel
Diffuser Material :: Glass
Voltage :: 120v
Lamping Type :: A-19 (INC)
Lamping Base :: E-26
Lamp Quantity :: 1
Lamp Wattage :: 100 W
Total Wattage :: 100 W
Lamps Included :: No
J-Box Type :: Standard

Photometrics

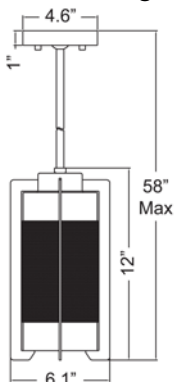
CCT :: 0
CRI :: 0
Wattage :: 100 W
Nominal Lumens :: 0
Delivered Lumens :: 0

Recommended Dimmers

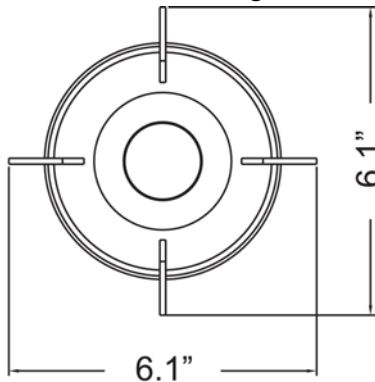
(TRIAC) Any Standard Dimmer

Additional Items :: 0

Line Drawing #1



Line Drawing #2



IES File

Image Not Available

Toll Free 800-828-5483 • www.AccessLighting.com

14410 Myford Road, Irvine, CA 92606

The information provided is subject to change without notice. ©2020 Access Lighting Corporation. All Rights Reserved
Rev. 202105 Filename:: 20738-BS_OPL.pdf

