



# ARTISTA EVOLVE

LED COMMERCIAL DOWNLIGHT  
RECESSED DOWNLIGHT



The Artista EVOLVE Series LED downlight the ideal recessed downlight for any retrofit or new construction project. The spring-action housing clips make the installation process a breeze in mere minutes for any power option. The Artista EVOLVE separates itself from competitor downlights by having selectable lumens and CCT switches enabling high flexibility at the project location. At just a flick of a switch your power and color projection can be varied, offering an unparalleled level of flexibility.

Project: \_\_\_\_\_

Qty: \_\_\_\_\_

Notes: \_\_\_\_\_

## OPERATING & ELECTRICAL

**Input voltage** 120-277Vac

**Power factor** 0.9

**Total harmonic distortion (THD)** <20%

**Dimming** 0-10V external dimming  
down to 10%.

## PERFORMANCE

**Lumens per Watt** >75 LPW at 90CRI

**Beam angle** 90°

## MECHANICAL & HOUSING

**Housing** Aluminum die cast housing  
for strength

**Lens** Highly durable polycarbonate lens ensures high efficiency light output for a clean, evenly illuminated surface with minimal glare. High transmittance lens allowing for a smooth, diffused light pattern.

**Finish** White powder coat finish ensures durability.

**Reflector** Reflector made from cast aluminum, powder coated, non-yellowing, white baffle and flange.

**Power Supply** driver

**LED Board**

**Spring** clips

## APPLICATION CONDITION

**Ambient temperature range** -20 to 40°C

**Protection** Wet location rated, IC rated

## COMPATIBLE MOUNTING

**Mounting** New construction or retrofit.  
Mounted with stainless steel spring-action housing clips.

## WARRANTY

**System warranty** 5 years

**Lumen maintenance** Rated for 70% initial lumen output at 50,000 hours of operation, operated at 25°C ambient temperature; per guidelines published by the Illuminating Engineering Society (IES). (L70 at 50,000 hours)

**IC RATED**

## ORDERING GUIDE

EXAMPLE: AE-DL-ATE-6-09-12WT-010-P30/35/40

AE-DL-ATE-	6-	09-12WT-	010-	P30/35/40
FIXTURE FAMILY	SHAPE & SIZE	POWER	CONTROLS	CCT
AE-DL-ATE- Aeralux Artista EVOLVE Series recessed downlight	6- 6" Round housing	09-12WT- 9/12 watts selectable: 700/900 lumens selectable Replaces 32W CFL	010- 0-10V External dimming down to 10%	P30/35/40 3000K/3500K/ 4000K selectable CCT
		14-18WT- 14/18 watts selectable: 1200/1500 lumens selectable Replaces 52W CFL		



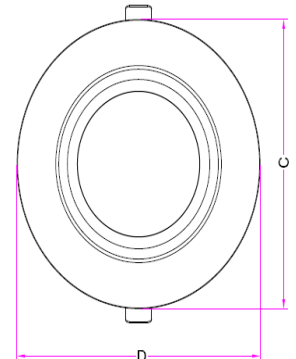
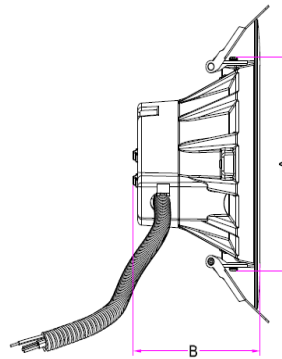
## PRODUCT DIMENSIONS

AE-DL-ATE-6-09-12WT-010-P30/35/40 (6-inch round)

Weight: 0.67Kg

### 9/12WT - 700/900lm

	Nominal (inch)	Lower Limit (inch)	Upper Limit (inch)
<b>A</b>	Ø5.5	Ø5.4	Ø5.6
<b>B (Body Length)</b>	3.8	3.8	99.5
<b>C (Diameter)</b>	7.4	7.3	7.4
<b>D (Width)</b>	7.4	7.3	7.4

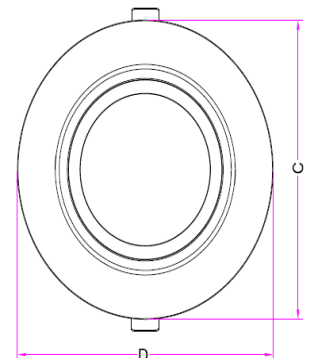
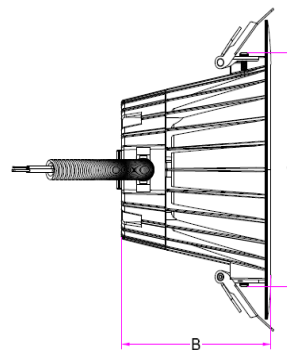


AE-DL-ATE-6-14-18WT-010-P30/35/40 (6-inch round)

Weight: 0.85Kg

### 14/18WT - 1200/1500lm

	Nominal (inch)	Lower Limit (inch)	Upper Limit (inch)
<b>A</b>	Ø5.8	Ø5.7	Ø5.9
<b>B (Body Length)</b>	4.4	4.4	4.5
<b>C (Diameter)</b>	7.4	7.3	7.4
<b>D (Width)</b>	7.4	7.3	7.4



## LUMEN ESTIMATE

Lumen output varies based on CCT and CRI. An estimate of lumen output of the various CCT/CRI combinations, use correction factors as per table below:

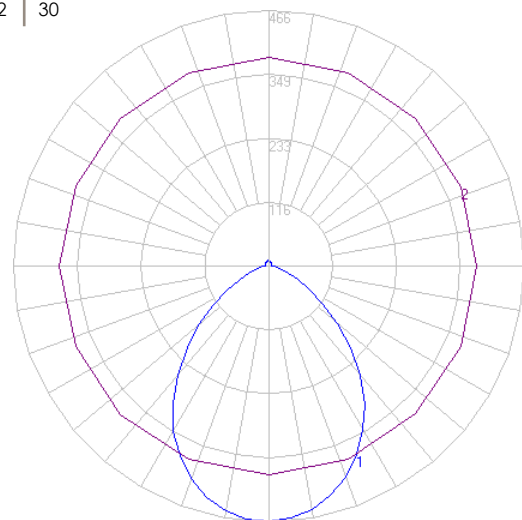
Lumen estimate adjustment factors				
CCT	2700K	3000K	3500K	4000K
NORMAL (90CRI)	0.97	1	1.03	1.05

## PHOTOMETRIC DATA

AE-DL-ATE-6-09-12WT-010-P30/35/40 (12W, 3000K)

Coefficients of utilization											
Ceiling	80%				70%		50%		30%		0%
Wall	70%	50%	30%	10%	50%	10%	50%	10%	50%	10%	0
RCR	Zonal Cavity Method – Effective floor reflectance = 20%										
Room Cavity Ratio	0	118	118	118	118	115	115	109	109	103	96
	1	109	105	102	99	103	97	98	93	93	84
	2	101	94	88	83	92	82	88	80	84	73
	3	93	84	77	72	82	71	79	69	76	63
	4	86	76	68	62	74	62	71	60	69	56
	5	80	69	61	55	67	54	65	53	62	49
	6	74	62	54	49	61	48	59	48	57	44
	7	69	57	49	44	56	43	54	43	53	40
	8	65	53	45	39	52	39	50	39	49	36
	9	61	49	41	36	48	36	46	35	45	33
	10	57	45	38	33	44	33	43	32	42	30

Zonal lumen			
Zone	Lumens	Zone	Lumens
0-10	43.77	90-100	5.63
10-20	122.14	100-110	5.58
20-30	174.91	110-120	5.7
30-40	190.46	120-130	5.75
40-50	162.85	130-140	5.54
50-60	110.91	140-150	4.98
60-70	60.47	150-160	4.03
70-80	27.33	160-170	2.67
80-90	11.72	170-180	0.95



## ACCESSORIES

Ordered separately, field installed

### NEW CONSTRUCTION FRAME KIT

AE-DL-FRKT-06

AE-DL-FRKT-08

6" Round

8" Round

#### Housing

Constructed of 22-gauge galvanized steel. For use in direct contact with thermal insulation.

#### Junction box

22-gauge galvanized steel with 2 snap-on covers with knockouts for 1/2" & 3/4" conduits.

#### Hanger bars

Pre-nailed style bar hangers that telescope from 15" to 26" suitable for short or long axis of housing.

AE-DL-AT-GOOFRING-06-08

AE-DL-AT-GOOFRING-08-10

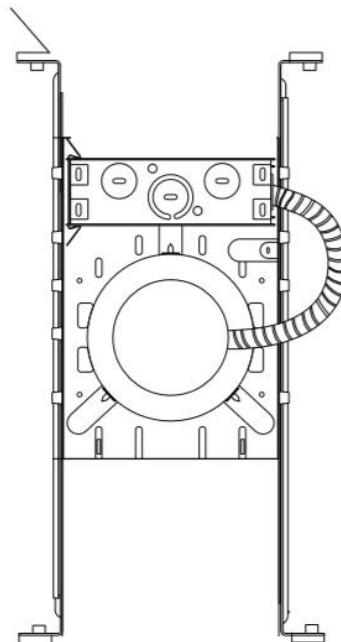
Goof ring 6 to 8 inches

Goof ring 8 to 10 inches

## DIMMERS

For list of compatible dimmers, please refer to [www.Aeralux.com](http://www.Aeralux.com)

## PHOTOGRAPHS





# ARTISTA EVOLVE

LED COMMERCIAL DOWNLIGHT

RECESSED DOWNLIGHT

## ENERGY-EFFICIENT LUMINAIRE

Energy Star certified high-efficacy output of >75 lumens per watt at 90CRI



## UNPARALLELED LIGHT FLEXIBILITY

Use the DIP switches on the top of the fixture's housing to switch between 2 lumens packages and 3 color temperature options



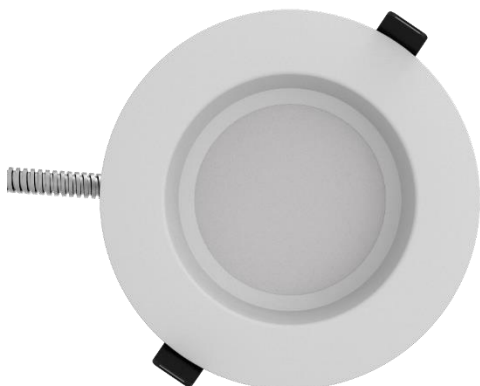
## PREMIUM DESIGN AND CONSTRUCTION

Housing made from aluminum die-cast for increased rigidity and strength.

Wet location rated and suitable for temperatures ranging from -20 to 40 degrees Celsius.

## RETROFIT OR NEW CONSTRUCTION

Durable stainless steel spring action housing clips for retrofit installations or purchase with the new construction frame kit for new constructions



Aeralux Inc.  
1-514-447-7598 | 1-630-534-2589  
[www.aeralux.com](http://www.aeralux.com)

Aeralux Incorporation All Rights Reserved. Any information provided is subject to change without notice. All values are typical values when measured under normal laboratory conditions.

# aeralux