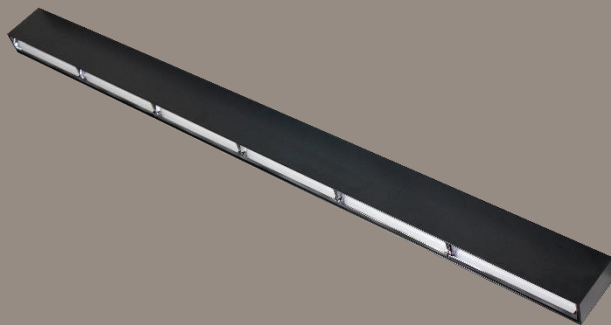




GEN6/SPS WW

LINEAR FIXTURES

Linear architectural lighting



The GEN6 & SPS WW is the next evolution of wall wash linear architectural lighting. The optic modules deliver remarkably smooth and uniform vertical illumination. It has a sleek modern look and comes standard in unique finishes Nebula White, Atomic Black and Silver RAL7044. The SPS WW offers uplight as well as the wallwash.

Project: _____

Qty: _____

Notes: _____

OPERATING & ELECTRICAL

Input voltage 120-347V
Power factor 0.9
Total harmonic distortion (THD) <20%
Dimming 0-10V external dimming down to 10%

PERFORMANCE

Lumens per Watt 91 LPW at 90 CRI White
87 LPW at 90 CRI Black
20 to 70W
Lambertian

Power

Distribution

MECHANICAL & HOUSING

Housing Extruded aluminum for increased rigidity and strength

Lens Highly durable frosted polycarbonate lens ensures high efficiency light output for a clean, evenly illuminated surface with minimal glare. High transmittance lens allowing for a smooth, diffused light pattern.

ORDERING GUIDE

Finish Aeralux nebula white, Aeralux atomic black anti-glare finishes, Silver RAL7044
Power Supply Factory wired electronic LED driver

LED Board

Discrete LED

APPLICATION CONDITION

Ambient temperature range -10 to 40°C

COMPATIBLE MOUNTING

Mounting Suspended (2x 6FT suspension cables standard with fixture purchase)

WARRANTY

System warranty 5 years

Lumen maintenance Rated for 85% initial lumen output at 50,000 hours of operation, operated at 25°C ambient temperature; per guidelines published by the Illuminating Engineering Society (IES). (L85 at 50,000 hours)

EXAMPLE: AE-SF-G6-A-CA-220-B-P30-010-PL-WH

| AE-SF-G6 | -A | -CA | -2 | 20 | -B | -P | 30 | -010 | -WW | -WH |
|----------------------------------|-----------------|---------------------------------------|---------------------|-------------------|-----------------|--------------|-----------------|--|------------------------|---------------------------------------|
| FIXTURE FAMILY | GEN | VOLTAGE | SIZE | POWER | ACCENT | CRI | CCT | DIMMING | LENS | FINISH |
| AE-SF-G6 Aeralux Gen 6 linear | -A First GEN | -CA 120-347Vac input voltage range | -2 2 feet length | 20 20* | -B No Accent | -P 90 CRI | 30 3000K CCT | -010 0-10V external dimming down to 10% | -WW Wallwash optics | -WH Aeralux Nebula White finish |
| | | | -4 4 feet length | 40 20/30/40** | | | 35 3500K CCT | | | -BK Aeralux Atomic Black finish to |
| | | | -6 6 feet length | 50 30/40/50*** | | | 40 4000K CCT | | | |
| | | | -8 8 feet length | 70 40/70**** | | | 50 5000K CCT | | | -SV Silver – RAL7044 |

| | | |
|-----|--------------|-------------------------------------|
| 2FT | 20W* | 20 watts - 1780 lms |
| 4FT | 20/30/40W** | 20/30/40 watts-1780/2670/3560 lms |
| 6FT | 30/40/50W*** | 30/40/50 watts – 2670/3560/4450 lms |
| 8FT | 40/70W**** | 40/70 watts – 3560/6230 lms |





GEN6/SPS WW

LINEAR FIXTURES

Linear architectural lighting

ORDERING GUIDE

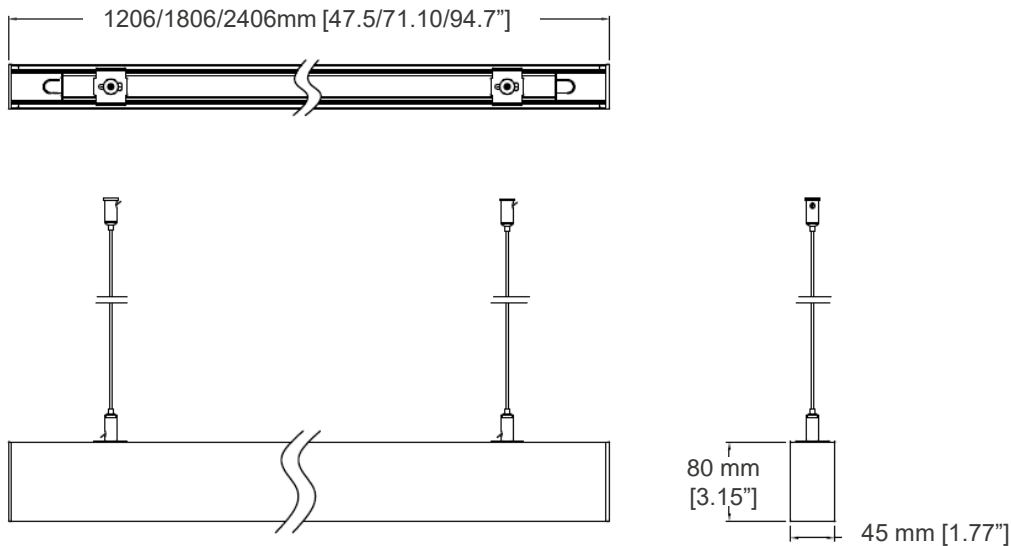
EXAMPLE: AE-SF-SPS-A-CA-230-B-P30-010-WW-WH

| AE-SF-SPS | -A | -CA | -2 | 20 | -B | -P | 30 | -010 | -WW | -WH |
|--|------------------------|--|----------------------------|------------------------------|------------------------|---------------------|------------------------|---|-------------------------------|--|
| FIXTURE FAMILY | GEN | VOLTAGE | SIZE | POWER | ACCENT | CRI | CCT | DIMMING | LENS | FINISH |
| AE-SF-SPS Aeralux SPS linear | -A First GEN | -CA 120-347Vac input voltage range | -2 2 feet length | 30 20/30W* | -B No Accent | -P 90 CRI | 30 3000K CCT | -010 0-10V external dimming down to 10% | -WW Wallwash optics | -WH Aeralux Nebula White finish |
| | | | -4 4 feet length | 50 30/40/50W** | | | 35 3500K CCT | | | -BK Aeralux Atomic Black finish to |
| | | | -6 6 feet length | 80 50/60/80W*** | | | 40 4000K CCT | | | |
| | | | -8 8 feet length | 100 60/80/100W**** | | | 50 5000K CCT | | | -SV Silver – RAL7044 |

70 % down, 30% up / 40% down, 60% up

| | | | | |
|-----|---------------|--|-----------------|--|
| 2FT | Avg 82 LPW | 20/30 watts switchable* Uplight 100% - 20W Only | 20W – 1640 lms | 14W downlight, 6W up-light / 8W downlight, 12W up-light |
| | | | 30W - 2460 lms | 21W downlight, 9W up-light/ 12W downlight, 18W up-light |
| 4FT | | 30/40/50 watts switchable** Uplight 100% - 30/40W Only | 30W – 2460 lms | 21W downlight, 9W up-light / 12W downlight,18W up-light |
| | | | 40W - 3280 lms | 28W downlight, 12W up-light / 16W down-light, 24W up-light |
| | | | 50W - 4100 lms | 35W downlight, 15W up-light / 20W downlight, 30W up-light |
| 6FT | | 50/60/80 watts switchable*** Uplight 100% - 50/60W Only | 50W - 4100 lms | 35W downlight, 15W up-light / 20W downlight, 30W up-light |
| | | | 60W - 4920 lms | 42W downlight, 18W up-light / 24W downlight, 36W up-light |
| | | | 80W - 6560 lms | 56W downlight, 24W up-light / 32W downlight, 48W up-light |
| 8FT | | 60/80/100 watts switchable**** Uplight 100% - 60/80W Only | 60W - 4920 lms | 42W downlight, 18W up-light / 24W downlight, 36W up-light |
| | | | 80W - 6560 lms | 56W downlight, 24W up-light / 32W downlight, 48W up-light |
| | | | 100W - 8200 lms | 70W downlight, 30W up-light / 40W downlight, 60W up-light, |

PRODUCT DIMENSIONS



Ordered separately, field installed

| Part Number | Description | Picture |
|--|---|---------|
| AE-SF-CANOPY-WH-4IN AE-SF-CANOPY-BK-4IN | Canopy Cover kit: 4" diameter – 2 pieces White or Black | |
| AE-SF-CANOPY-WH-5IN AE-SF-CANOPY-BK-5IN | Canopy Cover kit: 5" diameter - 2 pieces White or Black | |
| AE-SF-LINK-NR | Linkable Metal Accessory – 1 piece Fixture wired for continuous mounting | |
| AE-SF-GEN6-SMT-WH AE-SF-GEN6-SMT-BK | Surface mount kit – 1 piece – White Surface mount kit – 1 piece – Black | |
| AE-SF-PWRCORD-WH AE-SF-PWRCORD-BK | 8FT power cord – 120-277V - White 8FT power cord – 120-277V - Black | |
| AE-SF-PWRCORD-HV-WH AE-SF-PWRCORD-HV-BK | 8FT power cord – 120-347V - White 8FT power cord – 120-347V - Black | |
| AE-SF-WMB-WH AE-SF-WMB-BK | Wall mount kit – 2 pieces | |

Aeralux Incorporation All Rights Reserved. Any information provided is subject to change without notice. All values are typical values when measured under normal laboratory conditions.

LUMEN ESTIMATE

Lumen output varies based on CCT and CRI. An estimate of lumen output of the various CCT/CRI combinations, use correction factors as per table below:

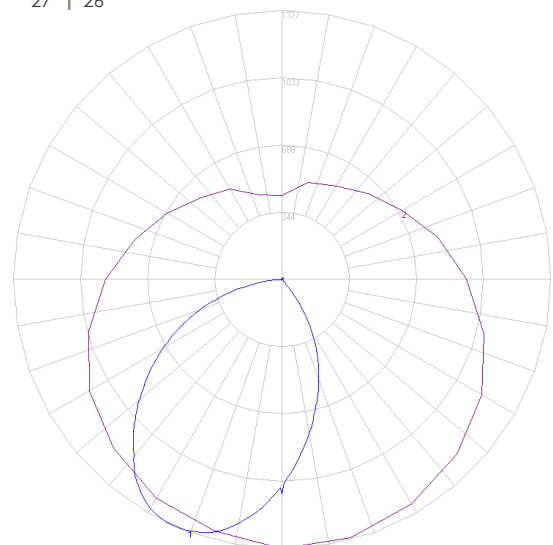
| Lumen estimate adjustment factors | | | | |
|-----------------------------------|-------|-------|-------|-------|
| CCT | 2700K | 3000K | 3500K | 4000K |
| NORMAL (80CRI) | 0.91 | 0.94 | 0.97 | 1 |

PHOTOMETRIC DATA

AE-SF-G6-A-CA-440-B-P-50-010-WW-XX

| Coefficients of utilization | | | | | | | | | | | |
|-----------------------------|---|-----|-----|-----|-----|-----|-----|-----|-----|-----|----|
| Ceiling | 80% | | | | 70% | | 50% | | 30% | | 0% |
| Wall | 70% | 50% | 30% | 10% | 50% | 10% | 50% | 10% | 50% | 10% | 0 |
| RCR | Zonal Cavity Method – Effective floor reflectance = 20% | | | | | | | | | | |
| 0 | 111 | 111 | 111 | 111 | 108 | 108 | 103 | 103 | 98 | 98 | 92 |
| 1 | 102 | 98 | 94 | 91 | 96 | 89 | 92 | 86 | 88 | 84 | 79 |
| 2 | 93 | 86 | 80 | 75 | 84 | 74 | 81 | 73 | 78 | 71 | 67 |
| 3 | 86 | 76 | 69 | 64 | 75 | 63 | 72 | 62 | 69 | 61 | 58 |
| 4 | 79 | 68 | 61 | 55 | 67 | 54 | 65 | 53 | 62 | 53 | 50 |
| 5 | 73 | 61 | 54 | 48 | 60 | 47 | 58 | 47 | 56 | 46 | 44 |
| 6 | 67 | 56 | 48 | 42 | 55 | 42 | 53 | 41 | 51 | 41 | 39 |
| 7 | 63 | 51 | 43 | 37 | 50 | 37 | 48 | 37 | 47 | 37 | 35 |
| 8 | 59 | 47 | 39 | 34 | 46 | 34 | 45 | 33 | 43 | 33 | 31 |
| 9 | 55 | 43 | 36 | 31 | 42 | 30 | 41 | 30 | 40 | 30 | 28 |
| 10 | 52 | 40 | 33 | 28 | 39 | 28 | 38 | 28 | 37 | 27 | 26 |

| Zonal lumen | | | |
|-------------|--------|---------|--------|
| Zone | Lumens | Zone | Lumens |
| 0-10 | 103.8 | 90-100 | 103.8 |
| 10-20 | 291.74 | 100-110 | 291.74 |
| 20-30 | 423.83 | 110-120 | 423.83 |
| 30-40 | 472.15 | 120-130 | 472.15 |
| 40-50 | 434.26 | 130-140 | 434.26 |
| 50-60 | 352.89 | 140-150 | 352.89 |
| 60-70 | 250.55 | 150-160 | 250.55 |
| 70-80 | 132.61 | 160-170 | 132.61 |
| 80-90 | 27.12 | 170-180 | 27.12 |





GEN6/SPS WW

LINEAR FIXTURES

Linear architectural lighting



HIGH-EFFICACY

100 lumen per watt at 80 CRI fixture provides long-term energy savings benefits.



MULTIPLE SIZES

Available in 4, 6, 8 feet lengths and can be connected in continuous mounting runs

INPUT VOLTAGE

Fixture input voltage range compatible from 120-347V.



ANTI-GLARE FINISH

Custom Aeralux anti-glare white and black finishes help reduce glare off of the fixture's housing accenting your project space.

Aeralux Inc.
1-514-447-7598 | 1-630-534-2589
www.aeralux.com

Aeralux Incorporation All Rights Reserved. Any information provided is subject to change without notice. All values are typical values when measured under normal laboratory conditions.

aeralux