



ARTEMIS

TRACK LIGHTING

Track fixture



The ARTEMIS series comes with a horizontal driver enclosure and a unique track head enhanced with the ability to adjust the focus of the optics based on your requirement. It is available in black, white and silver finishes or a combination of any two finishes to provide a unique customized product for your environment. This product also comes standard at 90 CRI. Aeralux also caters for lighting experts with a high-GAI (Gamut Area Index) option for an enhanced visual effect on products.

Project: _____

Qty: _____

Notes: _____

OPERATING & ELECTRICAL

Input Voltage

120Vac

Power factor

0.9

Dimming

Triac dimming

Total harmonic distortion (THD)

<20%

PERFORMANCE

Lumens per Watt

62-69 LPW at 90CRI

Power consumption

15W

Distribution

Variable beam angle from 23° to 46°

MECHANICAL & HOUSING

Housing

Aluminum die cast

Lens

Highly durable polycarbonate

lens ensures high efficiency light output for a clean, evenly illuminated surface with minimal glare.

Finish

White, black, silver

Power Supply

Factory wired electronic LED

driver

LED Board

COB

APPLICATION CONDITION

Ambient temperature range

-10 to 35°C

COMPATIBLE MOUNTING

Mounting

Juno, Global, Halo, Lightolier

WARRANTY

System warranty

5 years

Lumen maintenance

Rated for 85% initial lumen output at 50,000 hours of operation, operated at 25°C ambient temperature; per guidelines published by the Illuminating Engineering Society (IES). (L85 at 50,000 hours)

ORDERING GUIDE

EXAMPLE: AE-TL-AT12VA11P30J1BK

AE-TL-AT	12	VA	11	P	30	J1	BK
FIXTURE FAMILY	VOLTAGE	DISTRIBUTION		CRI	CCT	ADAPTER	FINISH
AE-TL-AT Aeralux Artemis Series track light	12 120Vac	VA Variable distribution from 23° to 46°	11 980 lumens at 90CRI 3000K	P Premium 90 CRI	30 3000K CCT	J1 Juno mounting system	BK Black powder coat finish
				S* Superior HIGH-GAI	35 3500K CCT	G1 Global mounting system	WH White powder coat finish
					40 4000K CCT	H1 Halo mounting system	SV Silver powder coat finish
						L1 Lightolier mounting system	

* Available only at 3000K & 3500K



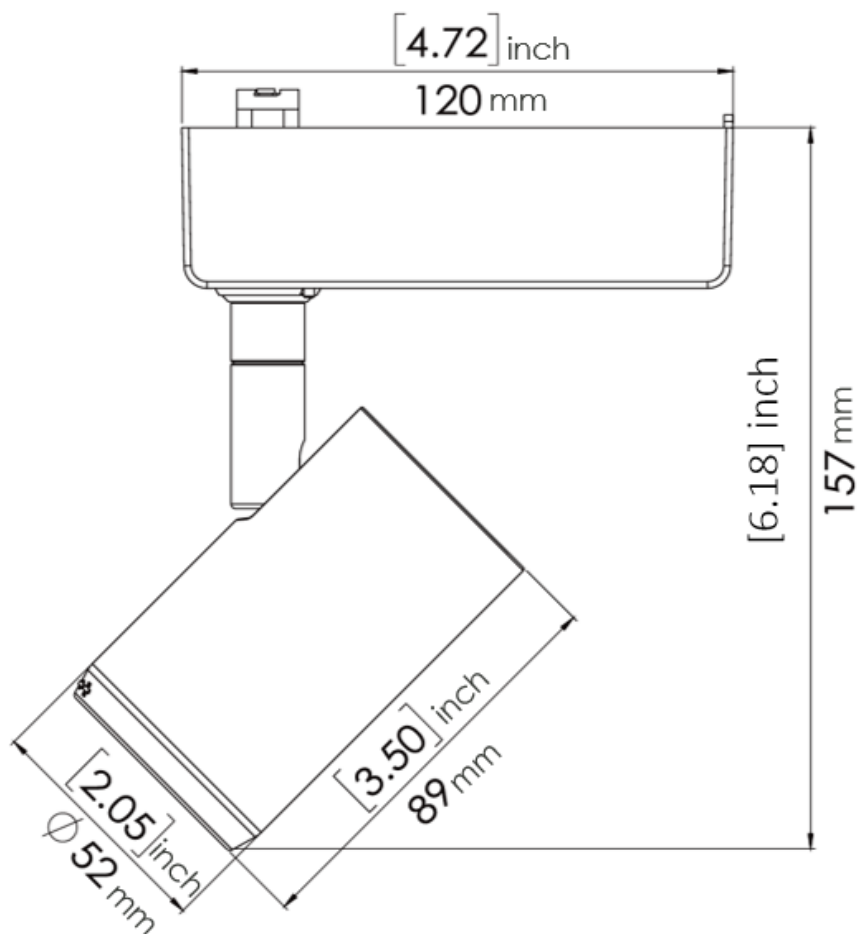
Aeralux Incorporation All Rights Reserved. Any information provided is subject to change without notice. All values are typical values when measured under normal laboratory conditions.

PRODUCT DIMENSIONS

AE-TL-HB12VA30N30XXX

Weight:

1.223Kg



DIMMER COMPATIBILITY LIST

Leading edge dimmers

Manufacturer	Manufacturer Part Number
Lutron	SLV-600X
	S2-LX
	GL-600H
	NFTU-5A
	DVLV-600P
Leviton	6602-X
	6681-X
	6683-X
	6684-X
	700-X
	705-X
	6633
	6674
	IPI06-1LZ
Cooper	9530XXX
Lightolier	MP600X
Philips	SR150LED120

Trailing edge dimmers

Manufacturer	Manufacturer Part Number
Lutron	NTELV-600-XX
	SELV-303P
	MAELV-600-XX
	DVELV-300P-XX
	SEIV-300P-XX
Leviton	IPE04-1LZ
	VZE06-1LX
	6615-P0T
Philips	SR400RPC120

LUMEN ESTIMATE

Lumen output varies based on CCT and CRI. An estimate of lumen output of the various CCT/CRI combinations, use correction factors as per table below:

Lumen estimate adjustment factors				
CCT	2700K	3000K	3500K	4000K
NORMAL (80CRI)	0.94	1	1.02	1.03
PREMIUM (90CRI)	0.78	0.81	0.84	0.86
SUPERIOR (HIGH GAI)	N/A	0.73	0.78	N/A

PHOTOMETRIC DATA

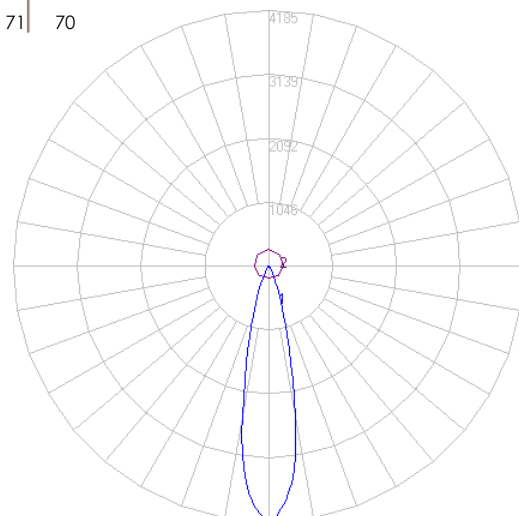
AE-TL-RS1412XP30XXXX

Coefficients of utilization											
Ceiling	80%				70%		50%		30%		0%
Wall	70%	50%	30%	10%	50%	10%	50%	10%	50%	10%	0
RCR	Zonal Cavity Method – Effective floor reflectance = 20%										
0	118	118	118	118	115	115	110	110	105	105	97
1	114	112	109	107	109	106	105	102	101	98	93
2	110	106	102	100	104	98	100	96	97	93	90
3	106	101	97	94	99	93	96	91	94	89	86
4	102	96	92	89	95	88	93	87	91	86	83
5	99	93	88	85	92	84	90	83	88	83	80
6	96	89	85	82	88	81	87	80	85	80	78
7	93	86	82	79	85	78	84	78	83	77	76
8	90	83	79	76	83	76	82	75	81	75	73
9	88	81	77	74	80	74	79	73	78	73	71
10	86	79	74	72	78	71	77	71	76	71	70

Luminance data

Angle	0°	45°	90°
45°	4166	3126	3448
55°	2127	1067	1304
65°	1244	592	926
75°	958	530	602
85°	793	399	444

Zonal lumen			
Zone	Lumens	Zone	Lumens
0-10	318.29	90-100	3.63
10-20	342.94	100-110	3.57
20-30	117.04	110-120	3.42
30-40	41.86	120-130	3.14
40-50	19.19	130-140	2.88
50-60	9.05	140-150	2.33
60-70	7.03	150-160	1.76
70-80	5.36	160-170	1.24
80-90	3.94	170-180	0.45





ARTEMIS

TRACK LIGHTING

Track fixture

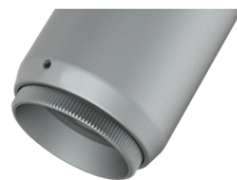
PHOTOGRAPHS

MULTIPLE MOUNTING ADAPTERS

Choose from any of the popular track systems such as Juno, Halo, Lightolier, or Global.

VARIABLE BEAM ANGLE

Enhance your project space perfectly by selecting the distribution by rotating the fixture's aperture to adjust the beam angle from 25 to 45 degrees.



PREMIUM DESIGN

Aluminum die-cast materials selected for efficient thermal heat dissipation, enhanced structural rigidity maximizing LED life and driver function.

PAINT FINISH

Factory standard in black, white, and silver. Contact for custom paint finishes to enhance your fixture to suit your project space.

Aeralux Inc.
1-514-447-7598 | 1-630-534-2589
www.aeralux.com

Aeralux Incorporation All Rights Reserved. Any information provided is subject to change without notice. All values are typical values when measured under normal laboratory conditions.

aeralux