



THALASSA ET6022

OUTDOOR PRODUCTS

SCONCE



The Thalassa outdoor cylindrical LED fixture was created with a sleek design deliberately, so it could blend in with many different outdoor building styles. The Thalassa can be mounted to offer either uplight only or downlight only and offers an elegant look in the install environment. Finally, this product is a complete aluminum die cast offering an unparalleled sense of finesse, fixture strength and quality.

Project: _____

Qty: _____

Notes: _____

OPERATING & ELECTRICAL

Input Voltage 100-277Vac

Power factor 0.9

Dimming 0-10V external dimming down to 10% (with DMG option)

Total harmonic distortion (THD) <20%

PERFORMANCE

Lumens per Watt ~70 LPW at 80CRI

Power consumption 24W

Beam angle 15, 25, 38, 45, 60°

MECHANICAL & HOUSING

Housing Aluminum die cast

Lens Highly durable, shatterproof tempered glass lens ensures high efficiency light output for a clean, evenly illuminated surface with minimal glare.

Finish

(RAL9006) powder coat finish

Power Supply

driver

LED Board

APPLICATION CONDITION

Ambient temperature range

Protection

COMPATIBLE MOUNTING

Mounting

WARRANTY

System warranty

Lumen maintenance

Rated for 85% initial lumen output at 50,000 hours of operation, operated at 25°C ambient temperature; per guidelines published by the Illuminating Engineering Society (IES). (L85 at 50,000 hours)

Aeralux white, black, gray

Factory wired electronic LED

COB

-25 to 50°C

IP65

Wall mount

5 years

ORDERING GUIDE

EXAMPLE: ET6022D-C24-3-20-80-B-DMG

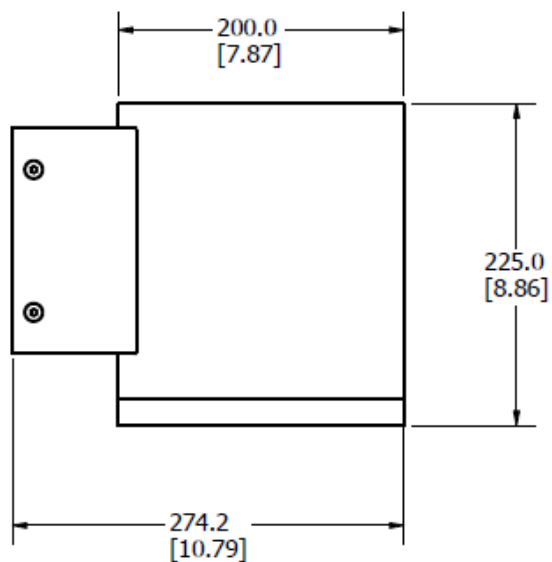
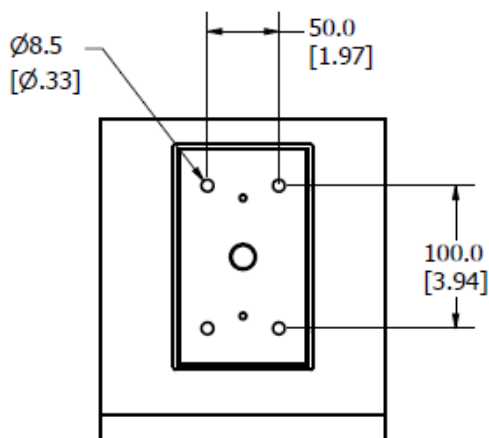
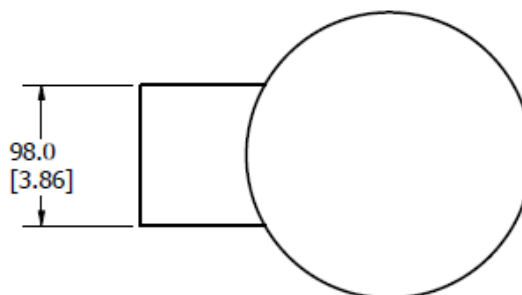
ET6022	D	-C24	-3	-20	-80	-B	-DMG
FIXTURE FAMILY	LIGHT DIRECTION	POWER	CCT	BEAM ANGLE	CRI	FINISH	CONTROLS
ET6022 AERALUX Thalassa ET6022 outdoor sconce fixture	D Downlight	-C24 24 watts: 1680 lumens	-3 3000K CCT	-15 15° beam angle	-80 80 CRI	-B Black powder coat finish	-DMG 0-10V external dimming down to 10%
				-25 25° beam angle		-W White powder coat finish	
			-4 4000K CCT	-38 38° beam angle		-S Silver (RAL9006) powder coat finish	
	U Up light	-C40 40 watts: 2800 lumens	-5 5000K CCT	-45 45° beam angle			
				-60 60° beam angle			



Aeralux Incorporation All Rights Reserved. Any information provided is subject to change without notice. All values are typical values when measured under normal laboratory conditions.

DIMENSIONS

EXAMPLE: ET6022D



LUMEN ESTIMATE

Lumen output varies based on CCT and CRI. An estimate of lumen output of the various CCT/CRI combinations, use correction factors as per table below:

Lumen estimate adjustment factors

CCT	2700K	3000K	3500K	4000K
NORMAL (80CRI)	0.94	1	1.02	1.03

PHOTOMETRIC DATA

ET6022D-C24-3-25-80

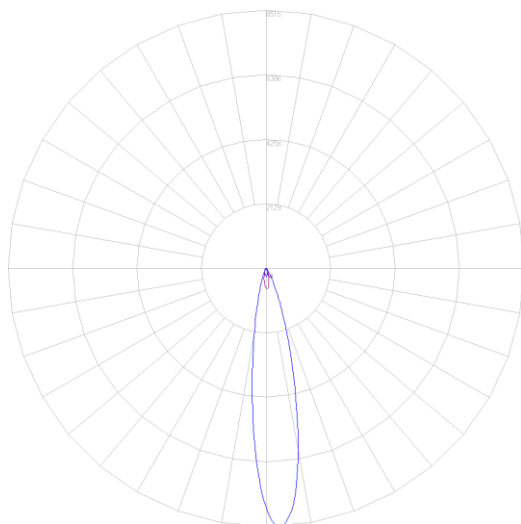
Coefficients of utilization

Ceiling	80%				70%		50%		30%		0%
Wall	70%	50%	30%	10%	50%	10%	50%	10%	50%	10%	0
RCR	Zonal Cavity Method – Effective floor reflectance = 20%										
0	101	101	101	101	99	99	94	94	90	90	85
1	98	96	94	92	94	91	90	88	87	86	82
2	94	91	88	86	90	85	87	83	84	82	79
3	91	87	84	81	86	81	84	79	82	78	76
4	88	84	80	78	83	77	81	76	79	75	74
5	86	81	77	74	80	74	78	73	77	73	71
6	83	78	74	72	77	71	76	71	75	71	69
7	81	75	72	69	75	69	74	69	73	68	67
8	79	73	70	67	73	67	72	67	71	67	66
9	77	71	68	65	71	65	70	65	69	65	64
10	75	69	66	64	69	64	68	63	68	63	62

Room Cavity Ratio

Zonal lumen

Zone	Lumens	Zone	Lumens
0-10	537.58	90-100	0
10-20	550.54	100-110	0
20-30	181.68	110-120	0
30-40	53.03	120-130	0
40-50	19.46	130-140	0
50-60	14.05	140-150	0
60-70	10.24	150-160	0
70-80	6.12	160-170	0
80-90	4.06	170-180	0





THALASSA ET6022

OUTDOOR PRODUCTS

SCONCE

PREMIUM MATERIALS

Constructed from aluminum die-cast enhancing thermal heat dissipation while providing excellent figure strength.



MULTIPLE BEAM ANGLES

Customize your fixture with a unique set of beam angles in the uplight or downlight orientation with the option to having a 20-degree tilt towards the wall.



MULTIPLE FINISH OPTIONS

Select from black, white, or silver powder coat anti-cracking finishes to accent your project space.

CRI

80 CRI provides greater rendering allowing for a more natural light look.



Aeralux Inc.
1-514-447-7598 | 1-630-534-2589
www.aeralux.com

Aeralux Incorporation All Rights Reserved. Any information provided is subject to change without notice. All values are typical values when measured under normal laboratory conditions.

aeralux