

INSTALLATION INSTRUCTIONS

AMRITA



⚠ WARNING

These products may represent a possible shock or fire hazard if improperly installed or attached in any way. Products should be installed in accordance with these instructions, current electrical codes, and/or the current National Electric Code (NEC).

⚠ WARNING

Use this fixture with included connection kit and 24V DC power supply only. Any other power feed may damage the fixture. Factory warranty will be void if used with any driver other than the recommended driver series. To reduce the risk of fire, electric shock or injury to persons, use this flexible light only with American Lighting recommended drivers, controllers, power connectors, splices and extensions.

⚠ WARNING

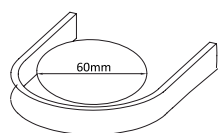
To reduce the risk of fire, electric shock or injury to persons, make sure that the electrical power to the system is disconnected at the source prior to installation or any servicing.

⚠ WARNING

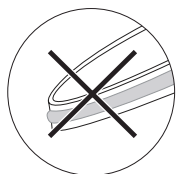
The minimum bend radius of AMRITA series product is 60cm or 2.36". Do not twist, drop, hang, sag, or bend product in any way other than intended. See below for reference. Never fold Microlux or bend past the minimum bending radius whether lighted or unlighted.

SAFETY INFORMATION

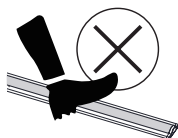
- Read all installation instructions before beginning; if not qualified, do not attempt installation. Contact a qualified electrician.
- To reduce the risk of fire, electric shock, or injury to persons, pay close attention to this manual and stay within its guidelines when using this product. Save these instructions for future use.
- Do not cover this product as the covering may cause rope to overheat, melt, or ignite.
- Uncoil flexible light prior to plugging in. Do not operate while on the reel, nor while it is coiled.
- This IP65 rated flexible light is suitable for wet locations, but not intended for submersion. Do not submerge flexible light in liquids, or use the product in the vicinity of standing water or other liquids, or where water can accumulate. IP65 rating is void once product is cut. Cut product is rated IP54 and intended for indoor, dry locations only.
- Do not route the cord or flexible light through walls, ceilings, doors, windows, or any similar part of the building structure.
- Do not install on gates or doors, or where subject to continuous flexing.
- Do not install in tanks or enclosures of any kinds.
- Do not install near flammable liquids or other flammable materials.
- Secure flexible light using only the mounting clips provided or factory recommended mounting channel (sold separately).
- Do not secure this product or its cord with staples, nails, or like means that may damage the outer jacket or cord insulation.
- Do not use if there is any damage to the flexible light, diodes or power cord insulation; inspect periodically.
- Follow instructions carefully when cutting. Ensure all end caps and cut locations are properly sealed with appropriate silicone type glue. Amrita can only be cut at specific intervals as indicated by the cutting marks printed on the bottom of the housing (3.94" or 10cm). Failure to cut at a cut mark will result in a loss of light. Before making any cuts or attaching any power cords or jumpers, be sure power is disconnected at the source!
- This product is designed for use by a qualified installer.
- This product is for decorative use only. Not to be used by children as a toy. Keep out of reach of small children.
- Do not exceed 5 meters or 16.4 feet maximum run distance in any single inter-connected run.
- Size your 24V DC driver appropriately for your run distance. Be sure not to load a driver to 100% as this will reduce its efficiency; a 90% maximum load is recommended. Recommended drivers include ADPT-DR and LED-DRJ series.
- The rated ambient temperature range for Amrita is -25°C (-13°F) to 45°C (113°F). Freezing temperatures may cause product rigidity.



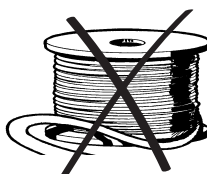
Recommended Bend
Radius is
60mm (2.36in)



Do not pinch
or bend tightly



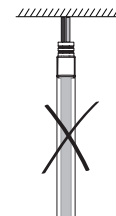
Not intended for
walkover use



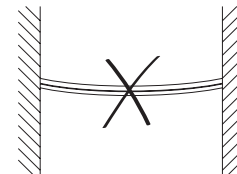
Do not operate while
coiled or on the reel.



Do not
twist



Do not hang from
power cable



Do not
droop or sag

PRODUCT INFORMATION

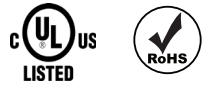
Amrita 16.4ft reels include attached 6ft lead cables, (1) additional 6ft power cable connection, (1) end cap, and (15) mounting clips.

CARE AND MAINTENANCE:

1. For cleaning, use a soft, dry or damp cloth. Do not use harsh chemicals or abrasives.

INSTALLATION INSTRUCTIONS

AMRITA

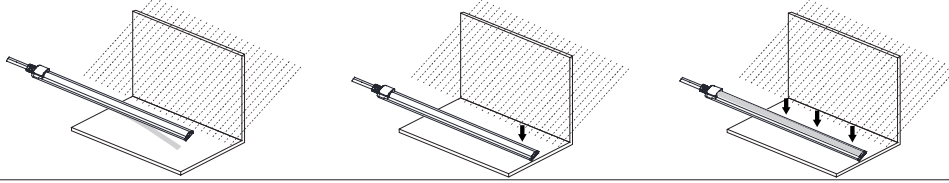


MOUNTING AMRITA WITH TAPE BACKING (Figure 1):

Disconnect power at the source prior to attempting installation or service of product.

1. Peel back protective backing from the back of the tape on the backside of the Amrita.
2. Affix tape to a clean, dry, smooth, and sturdy surface. Press down gently on the Amrita to ensure even adhesion.

FIGURE 1

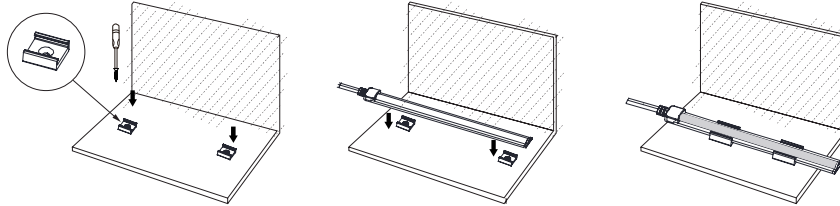


MOUNTING AMRITA WITH CLIPS (Figure 2):

Disconnect power at the source prior to attempting installation or service of product.

1. Determine locations of mounting clips and mark with pencil.
2. Affix mounting clips to clean, sturdy surface via the screws included.
3. Attach the Amrita to the mounting clips by gently pressing down into the clips.

FIGURE 2

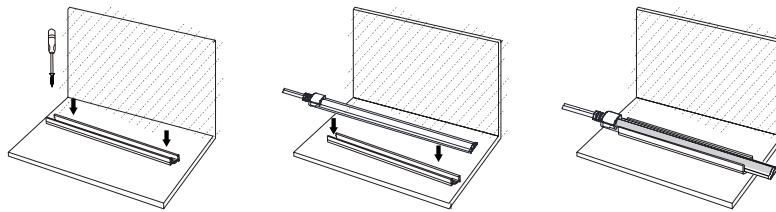


MOUNTING AMRITA WITH CHANNEL (Figures 3):

Disconnect power at the source prior to attempting installation or service of product.

1. Determine locations of mounting channel and mark with pencil.
2. Affix mounting channel to clean, sturdy surface by drilling holes and affixing screws.
3. Attach the Amrita to the mounting channel by gently pressing down into the channel.

FIGURE 3



LINKING MICROLUX WITH A SPLICE CONNECTOR (Figures 4 & 5):

Disconnect power at the source prior to attempting installation or service of product. Use this fixture with included power cable and 24V DC power supply only. Any other power feed may damage the fixture. Static White:

1. Align two sections of MicroLux so the polarity is matched.
2. Remove a small section of the underside of either piece, about a 3/8" long. NOTE: DO NOT DAMAGE COPPER CONDUCTOR OR FIXTURE WILL CEASE FUNCTION.
3. Butt the ends of the MicroLux sections together, positive to positive and negative to negative.

RGBW:

4. Connect the beginning of the tape light to an appropriate RGBW controller ensuring to match each wire to the appropriate terminal (24V black to +, R to R, G to G, B to B, and W to W).
5. Wire the controller to an appropriate LED driver, ensuring to match polarity (Red +, Black -).
6. Bring power to the direct wire power supply, ensuring to match polarity (Red +, Black -).

FIGURE 4

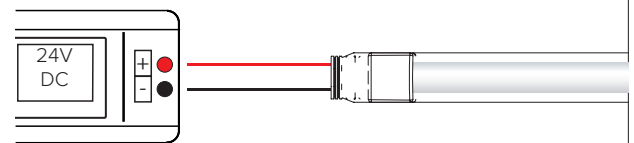


FIGURE 5

