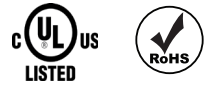


INSTALLATION INSTRUCTIONS

MIN



⚠ WARNING

These products may represent a possible shock or fire hazard if improperly installed or attached in any way. Products should be installed in accordance with these instructions, current electrical codes, and/or the current National Electric Code (NEC).

⚠ WARNING

Use this fixture with included connection kit and 24V DC power supply only. Any other power feed may damage the fixture. Factory warranty will be void if used with any driver other than the recommended driver series. To reduce the risk of fire, electric shock or injury to persons, use this flexible light only with American Lighting recommended drivers, controllers, power connectors, splices and extensions.

⚠ WARNING

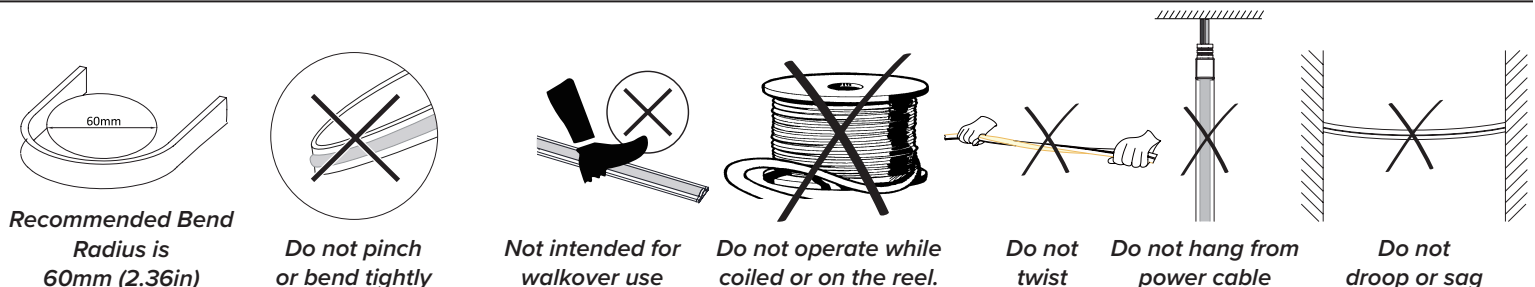
To reduce the risk of fire, electric shock or injury to persons, make sure that the electrical power to the system is disconnected at the source prior to installation or any servicing.

⚠ WARNING

The minimum bend radius of Minuet series product is 60mm or 2.36". Do not twist, drop, hang, sag, or bend product in any way other than intended. See below for reference. Never fold Minuet or bend past the minimum bending radius whether lighted or unlighted.

SAFETY INFORMATION

- Read all installation instructions before beginning; if not qualified, do not attempt installation. Contact a qualified electrician.
- To reduce the risk of fire, electric shock, or injury to persons, pay close attention to this manual and stay within its guidelines when using this product. Save these instructions for future use.
- Do not cover this product as the covering may cause rope to overheat, melt, or ignite.
- Uncoil flexible light prior to plugging in. Do not operate while on the reel, nor while it is coiled.
- This IP65 rated flexible light is suitable for wet locations, but not intended for submersion. Do not submerge flexible light in liquids, or use the product in the vicinity of standing water or other liquids, or where water can accumulate. IP65 rating is void once product is cut. Cut product is rated IP54 and intended for indoor, dry locations only.
- Do not route the cord or flexible light through walls, ceilings, doors, windows, or any similar part of the building structure.
- Do not install on gates or doors, or where subject to continuous flexing.
- Do not install in tanks or enclosures of any kinds.
- Do not install near flammable liquids or other flammable materials.
- Secure flexible light using only the mounting clips provided or factory recommended mounting channel (sold separately).
- Do not secure this product or its cord with staples, nails, or like means that may damage the outer jacket or cord insulation.
- Do not use if there is any damage to the flexible light, diodes or power cord insulation; inspect periodically.
- Follow instructions carefully when cutting. Ensure all end caps and cut locations are properly sealed with appropriate silicone type glue. Minuet can only be cut at specific intervals as indicated by the cutting marks printed on the bottom of the housing (3.94" or 10cm). Failure to cut at a cut mark will result in a loss of light. Before making any cuts or attaching any power cords or jumpers, be sure power is disconnected at the source!
- This product is designed for use by a qualified installer.
- This product is for decorative use only. Not to be used by children as a toy. Keep out of reach of small children.
- Do not exceed 5 meters or 16.4 feet maximum run distance in any single inter-connected run.
- Size your 24V DC driver appropriately for your run distance. Be sure not to load a driver to 100% as this will reduce its efficiency; a 90% maximum load is recommended. Recommended drivers include ADPT-DR and LED-DRJ series.
- The rated ambient temperature range for Minuet is -25°C (-13°F) to 45°C (113°F). Freezing temperatures may cause product rigidity.



PRODUCT INFORMATION

Minuet 16.4ft reels include attached 6ft lead cables, (1) additional 6ft power cable connection, (1) end cap, and (15) mounting clips.

CARE AND MAINTENANCE:

1. For cleaning, use a soft, dry or damp cloth. Do not use harsh chemicals or abrasives.

INSTALLATION INSTRUCTIONS

MIN

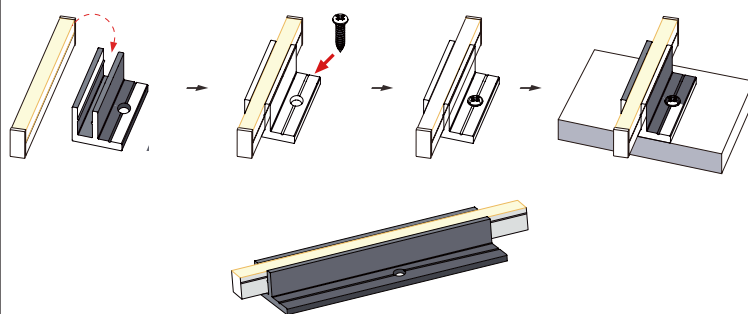


Mounting Minuet (Figure 1):

Disconnect power at the source prior to attempting installation or service of product.

1. Determine the desired locations and lengths of Minuet to be installed. Use this information to determine locations and sizes of 24V DC power supplies.
2. Install mounting aluminum channel by screwing the channel into a solid, sturdy surface. See Figure 1. The distance between two parallel lines of Minuet must be at least 1/2".
3. Gently push the Minuet into the mounting channel starting at the beginning of the run and moving down the line towards the end. Leave enough room for the power cable to reach the power supply and for connections to reach the next piece of Minuet. Ensure the Minuet does not sag and does not bend more than the recommended bend radius of 2.36" (60mm).

FIGURE 1

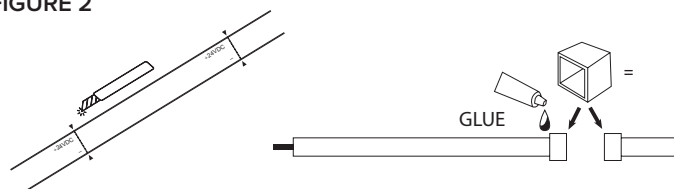


CUTTING Minuet (Figure 2):

Disconnect power at the source prior to attempting installation or service of product. IP65 rating is void once product is cut. DIY connections are intended for indoor, dry location only.

1. Determine the desired location of the cut. Cut marks are clearly indicated on jacketing of flexible light. See Figure 2.
2. Using an appropriate utility blade, gently cut straight down through the body of the Minuet, from the top, directly over the cutting increment mark, to the bottom of the Minuet. Do not use scissors or bolt cutters to cut Minuet. Do not cut Minuet diagonally or horizontally as this may damage the product.
3. Seal cut-end using included end cap and an appropriately rated silicone glue (not included).

FIGURE 2



Powering Minuet (Figure 4):

Disconnect power at the source prior to attempting installation or service of product.

1. Ensure all connections are made in a sealed, dry environment such as a NEMA junction box.
2. Connect the lead cables to a suitable 24V DC driver by matching polarity.

FIGURE 4

| | | | |
|---------------------|-------|---|--------------|
| Monarch Power Cable | Black | → | Negative (-) |
| | Red | → | Positive (+) |