

INSTALLATION INSTRUCTIONS

SPKPL-120VSW-WH



⚠ WARNING

These products may represent a possible shock or fire hazard if improperly installed or attached in any way. Products should be installed in accordance with these instructions, current electrical codes, and/or the current National Electric Code (NEC).

⚠ WARNING

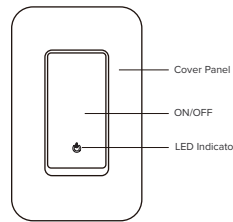
Do not exceed maximum recommended loads! 15A total.

⚠ WARNING: RISK OF ELECTRIC SHOCK

Electricity can cause personal injury and property damage if handled improperly. If you are not sure about any part of these instructions, please seek professional assistance from a qualified electrician. Ensure all work meets applicable local and national codes.

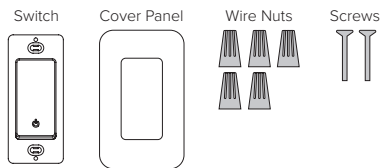
SAFETY INFORMATION

- Read all installation instructions before beginning; if not qualified, do not attempt installation. Contact a qualified electrician.
- To reduce the risk of fire, electric shock, or injury to persons, pay close attention to this manual and stay within its guidelines when using this product. Save these instructions for future use.
- This product is suitable for indoor use in dry locations only.
- Do not submerge in liquids nor use the product in the vicinity of standing water or other liquids, or where water can accumulate.
- Do not use if there is any damage to the product; inspect periodically.
- Do not install in tanks or enclosures of any kinds.
- This product utilizes Bluetooth® 2.4Ghz wireless technology.
- The rated input power for this unit is 100-120V AC 60Hz.
- The maximum rated current for this unit is 15A.
- The standby power consumption of this unit is ≤0.5W.
- This unit is not intended to be used in conjunction with a any dimmer.



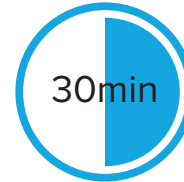
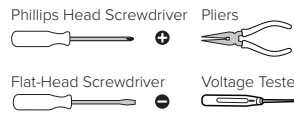
| Light Color | Light Status | Switch Status | Remarks |
|-------------|----------------------|--|--------------------------------|
| Green | ON | Power ON(Default) | Support Self-definition on APP |
| | OFF | Power OFF(Default) | |
| | Blink Quickly (0.5s) | Ready for default configuration mode | |
| | Blink Slowly (1s) | Ready for AP (Access Point) configuration mode | |

CONTENTS:



CONSIDERATIONS:

Tools Needed:



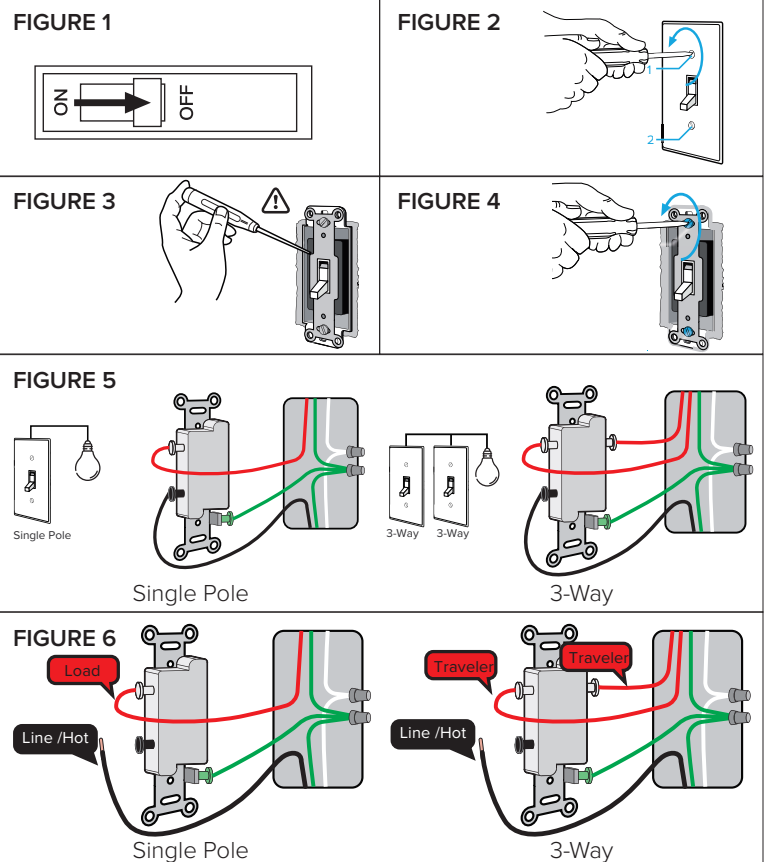
Approximately 30 minutes to install and setup the switch

INSTALLATION:

Disconnect power from source prior to attempting installation. Make all connections and mount in place prior to providing power to system. This product is designed to be installed in a single gang junction box.

1. Locate the circuit breaker panel and turn off the power to each switch being replaced/installed. More than one circuit breaker may need to be turned off. See Figure 1.
2. Remove the existing faceplate by unscrewing the mounting screws and pull it away from the wall. See Figure 2.
3. Verify power is off. Once the faceplate is removed from the existing switch, use an electrical voltage tester to test all wires connected to the switch to ensure there is no voltage in the circuit. See Figure 3.
4. Unscrew the mounting screws from the junction box and pull out the existing switch. See Figure 4.
5. Identify whether the existing switch is a Single Pole Switch or a 3-Way Switch. See Figure 5.
 - Single Pole: One switch controls one light or one bundle of lights.
 - 3-Way: Two switches control the same light or the same bundle of lights.
6. Identify the Line and Load wires. Line wires are usually BLACK, attached with a BLACK screw, and may be marked "common". See Figure 6.
 - Note: The color of your wire may be different from the color shown in Figures.

Continued on next page...



INSTALLATION INSTRUCTIONS

SPKPL-120VSW-WH



INSTALLATION CONTINUED:

7. Identify the Neutral wires. Neutral wires are usually WHITE.
- Note: If there is no neutral, try another location or call an electrician for help.
8. Test the Neutral and Ground wires. Ground wires are usually BARE COPPER, GREEN, or GREEN & YELLOW. Make sure there is no power on the Neutral wires from neighboring circuits. If necessary, shut off additional circuits until no voltage is found.
9. Take photos of the wiring for reference.
10. Loosen the screw terminals and remove the existing switch.
11. Proceed to wire the smart switch. See Figures 11-14 for compatible configurations. Spektrum+ Smart Switch is not intended to be used on the same circuit as a traditional wall dimmer or smart wall dimmer.
12. Mount the wall switch to the junction box by using the included screws. See Figure 15.
13. Affix the cover panel by gently pushing on all 4 corners. See Figure 16.

| | |
|--|--|
| <p>FIGURE 7</p> | <p>FIGURE 8</p> |
| <p>FIGURE 9</p> | <p>FIGURE 10</p> |
| <p>FIGURE 11 Single Pole Wiring Diagram</p> | <p>FIGURE 12 Single Pole Wiring Diagram (3-Way Model)</p> <p>Cap off the remaining L2 wire (RED) from the Switch with a wire nut.</p> |
| <p>FIGURE 13 3-Way Wiring Diagram</p> <p>Replace ONE of your REGULAR 3-WAY SWITCHES with SMART SWITCH</p> | <p>FIGURE 14 3-Way Wiring Diagram</p> <p>Replace BOTH of your REGULAR 3-WAY SWITCHES with SMART SWITCHES</p> |
| <p>Smart Switch and Traditional Dimmer or Smart Dimmer are not to be connected together.</p> | |
| <p>FIGURE 15</p> | <p>FIGURE 16</p> |

CONTROLLING THE SMART SWITCH: The Spektrum+ smart wall switch utilizes Bluetooth Wireless Technology and can be controlled manually or via the Spektrum+ Smart Lighting App. It is not intended to be used in conjunction with any dimmer.

DISTANCE OF REMOTE CONTROL CAPABILITY: 25 meters (approx. 80ft)

RESET THE DEVICE: Press and hold the power button on the device for 8 seconds until the indicator light begins flashing.

USING THE SPEKTRUM+ SMART LIGHTING APP: Please follow the Spektrum+ Smart Lighting App guide.

FCC Compliance Statement

This device complies with part 15 of the FCC Rules. Operation is subject to the following two conditions:

1. This device may not cause harmful interference, and
2. This device must accept any interference received, including interference that may cause undesired operation.

FCC WARNING

This equipment has been tested and found to comply with the limits for a Class B digital device, pursuant to Part 15 of the FCC Rules. These limits are designed to provide reasonable protection against harmful interference in a residential installation. This equipment generates, uses and can radiate radio frequency energy and, if not installed and used in accordance with the instructions, may cause harmful interference to radio communications. However, there is no guarantee that interference will not occur in a particular installation. If this equipment does cause harmful interference to radio or television reception, which can be determined by turning the equipment off and on, the user is encouraged to try to correct the interference by one or more of the following measures:

- Reorient or relocate the receiving antenna.
- Increase the separation between the equipment and the receiver.
- Connect the equipment into an outlet different from that to which the receiver is connected.
- Consult the dealer or an experienced radio/TV technician for help.

Changes or modifications not expressly approved by the party responsible for compliance could void the user's authority to operate the equipment.