

MINUET

24V DC Cut-Anywhere Flexible LED Neon

Featuring fully encased tape light, Minuet provides smooth evenly diffused light that eliminates the needs for additional extrusion housings and lenses. With light emitting from three sides, Minuet is a unique product that can be used in small spaces, or be placed on in direct view to meet the needs of dynamic lighting installations.

- Low-profile, flexible light strip in 4x6 side bend or 6x6 top bend
- UV, flame, and saltwater resistant (IP65) silicone coating
- Long life LEDs produce high lumen output
- Durable housing with 2.36" bending radius
- Cuttable anywhere with a maximum run of 16.4 feet
- Dimmable with most TRIAC, ELV, or CL dimmers
- Suitable for woodwork & cabinetry, coves, frame, bars, rails, and other areas where a small profile or outline of light is needed
- cULus Listed for wet locations



MINUET QUICK SPECS	
VOLTAGE	24V DC
WATTAGE	2.43W per foot
LUMENS	Up to 105Lm/ft (4x6) / Up to 182Lm/ft (6x6)
CCT	2700K / 3000K / 4000K
MAX RUN	16.4ft (5m)
CUTTING POINTS	Anywhere
IP RATING	IP65 - Wet Location
DIMMING	5-100% TRIAC/ELV/CL
DIMENSIONS	0.16" (4mm) W x 0.24" (6mm) H
BEAM ANGLE	120°
OPERATING TEMP	-40°C (-40°F) to 55°C (131°F)*
CERTIFICATIONS	cULus Listed - Wet Locations, RoHS Compliant
RATED LIFE	50,000 Hours

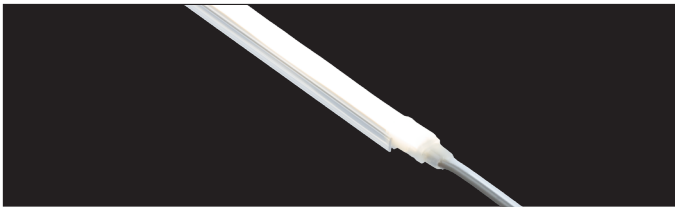
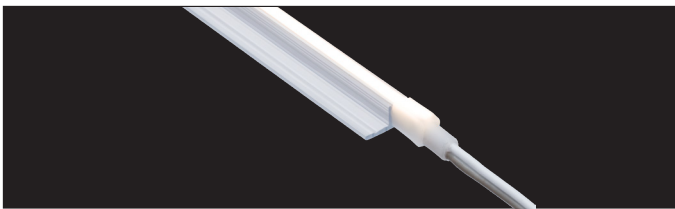
*Do not install in inclement weather or extreme conditions (i.e. -25°C (-13°F) and below)

PROJECT:

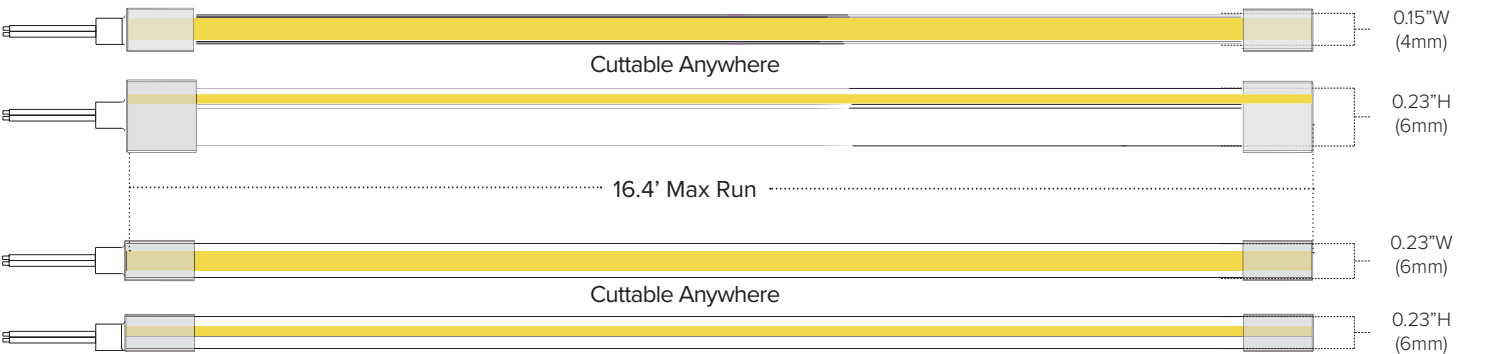
TYPE:

LOCATION:

CATALOG NUMBER:



MINUET QUICK LOOK



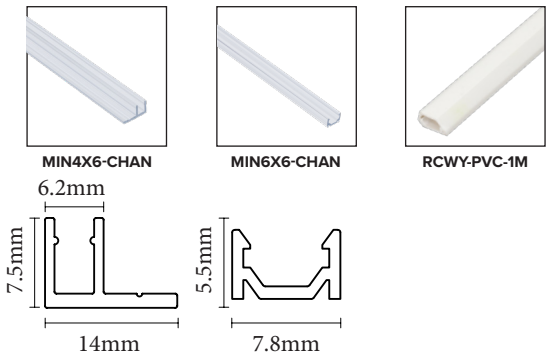
MINUET ORDERING INFORMATION

ITEM NUMBER	PROFILE	VOLTAGE	CCT	LENGTH	LUMENS / FT	WATTAGE / FT	IP RATING	CUTTING	MAX RUN
MIN4X6-27K-16	4x6mm	24V DC	2700K	16.4ft	93Lm/ft	2.43W/ft	IP65	Anywhere	16.4ft
MIN4X6-30K-16	4x6mm	24V DC	3000K	16.4ft	98Lm/ft	2.43W/ft	IP65	Anywhere	16.4ft
MIN4X6-40K-16	4x6mm	24V DC	4000K	16.4ft	105Lm/ft	2.43W/ft	IP65	Anywhere	16.4ft
MIN6X6-27K-16	6x6mm	24V DC	2700K	16.4ft	158Lm/ft	2.43W/ft	IP65	Anywhere	16.4ft
MIN6X6-30K-16	6x6mm	24V DC	3000K	16.4ft	165Lm/ft	2.43W/ft	IP65	Anywhere	16.4ft
MIN6X6-40K-16	6x6mm	24V DC	4000K	16.4ft	182Lm/ft	2.43W/ft	IP65	Anywhere	16.4ft

Each Neon Includes: 6ft lead wire / 6ft tail wire

MINUET ACCESSORIES

ITEM NUMBER	DESCRIPTION
MIN4X6-CHAN-1M	1m PC Mounting Channel for Minuet 4x6
MIN6X6-CHAN-1M	1m PC Mounting Channel for Minuet 6x6
RCWY-PVC-1M	1m Plastic Wire Cover Raceway



RECOMMENDED POWER SUPPLIES

ITEM NUMBER	DESCRIPTION	MAX / MIN LOAD	INPUT VOLTAGE	OUTPUT VOLTAGE	DIMMABLE	DIMENSIONS
ADPT-DRJ-30-24	Adaptive Series 30W	30W / 3W	100-277V AC	24V DC	Yes*	6.49"L x 3.6"W x 1.02"H
ADPT-DRJ-60-24	Adaptive Series 60W	60W / 6W	100-277V AC	24V DC	Yes*	7.4"L x 3.6"W x 1.02"H
ADPT-DRJ-96-24	Adaptive Series 96W	96W / 9.6W	100-277V AC	24V DC	Yes*	8.66"L x 3.6"W x 1.61"H
ADPT-DRJ-192-24	Adaptive Series 192W (2 x 96W)	192W / 19.2W	100-277V AC	24V DC	Yes*	10.94"L x 4.25"W x 1.8"H
ADPT-DRJ-288-24	Adaptive Series 288W (3 x 96W)	288W / 28.8W	100-277V AC	24V DC	Yes*	11.85"L x 4.25"W x 1.8"H

Phase Dimming Compatible With Most MLV, ELV, and TRIAC Dimmers



AMERICAN LIGHTING WARRANTY

LIMITED WARRANTY FOR LED PRODUCTS: 3 YEARS

LIMITED PRODUCT WARRANTY

Our products are warranted to be free from defects in material and workmanship for the warranty period listed. Warranty periods begin from the date of shipment from American Lighting Inc's warehouse to the original purchaser. Products that prove to be defective during their specific warranty period will be either repaired or replaced, at the sole discretion of American Lighting Inc. Claims for defective products must be submitted in writing to American Lighting Inc's RGA Department within the warranty period. Upon approval of such return, American Lighting Inc reserves the right to inspect the product for misuse or abuse. Claims for indirect or consequential damages or for product that, in American Lighting Inc's opinion, has been misused will be denied. This is a warranty of product reliability only and not a warranty of merchantability or fitness for a particular purpose. American Lighting Inc shall have no liability whatsoever in any event for payment of incidental or consequential damages, including, without limitations, installation costs and/or damages for personal injury and/or property. These products may represent a possible shock or fire hazard if improperly installed or altered in any way. This warranty does not apply to any product that has not been properly installed in accordance with current local codes and/or the National Electrical Code. Products that require a transformer, driver, or power supply must be used in conjunction with American Lighting Inc's recommended power supply to ensure safety and retain product warranty.

PRODUCT SPECIFICATIONS

For the latest product information, updates, instructions and details concerning specifications, colors, finishes, performance, installation and design, visit www.americanlighting.com.

Color may vary from the color printed herein due to limitations in photographic and printing processes. American Lighting Inc. reserves the right to change product specifications without notice. Other product specifications such as color temperature, wavelength characteristics and lumen output are subject to production limitations and may vary.

LED technology is changing rapidly, and not all color temperatures and performance levels can be duplicated at a later time. Best practices include purchasing 10-15% more for a particular project on the same initial order where white LED color temperatures must be maintained over project and product life. Eventual product replacement should be considered at layout and design stages. Best practices also include testing connections and product performance prior to mounting and/or installing.

AVERAGE LIFE

Average incandescent lamp life, rated life and average life are terms used to describe the number of hours at which half of the lamps have failed. For LEDs, the hours of rated life specify the point where 70% of original lumen output is reached. Below this point, the effective life is over, however, the LED may still emit light. Individual results may vary with actual environmental conditions including, but not limited to, proper installation, ambient temperature and/or input voltage fluctuations.