

GTX BUNDLE

Surface & Recessed Mount Extrusion Bundle

The ultimate extrusion compatible with all Trulux tape light, the GTX is the perfect blend of utility and sleek design. The medium height profile eliminates most dotting regardless of the light source. All while providing evenly diffused lighting. Do you need double the light output but are limited on mounting space? No worries. The GTX allows for side-by-side tape light installation for widths 12mm or less.

- Surface or recessed mounting capable
- Maximum recommended wattage per foot of tape light < 6.1W/ft (22W/M)
- Allows for side by side tape light installation for double the output
- Pre-drilled, countersunk holes
- Frosted, UV & flame resistant lens protects light source while evenly diffusing light
- Anodized aluminum provides excellent heat dissipation
- Field cuttable extrusion and lens
- Compatible with 10-12mm wide tape light with HD connectors

Available Finishes



Anodized Aluminum

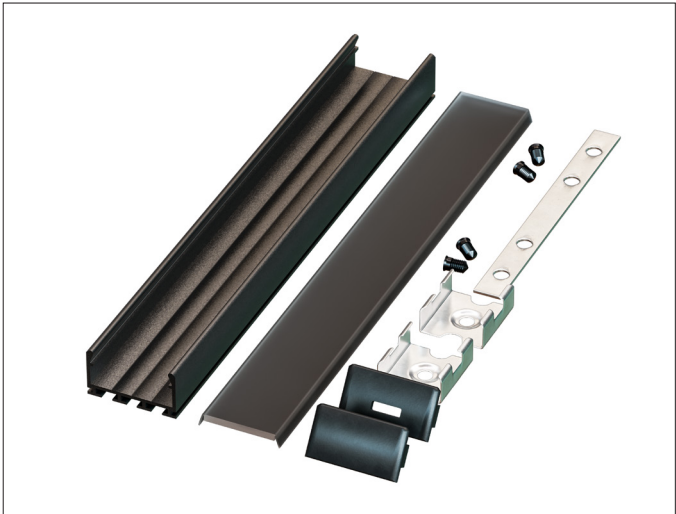
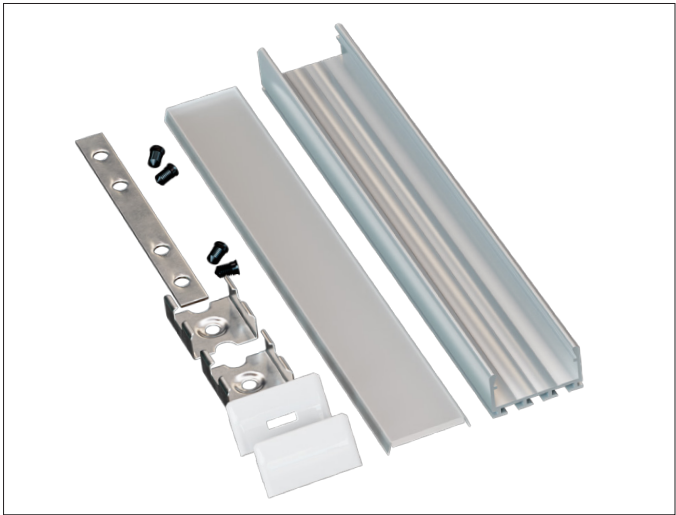


Black

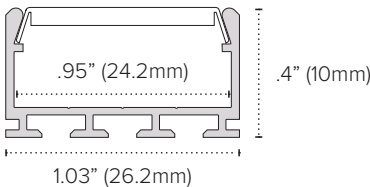
Compatible Tape Light

- Single Color (10mm) + HD Connector
- Tunable CCT (10mm) + HD Connector
- RGBW / RGBTW (12mm) + HD Connector

PROJECT:
TYPE:
LOCATION:
CATALOG NUMBER:



GTX DIMENSIONS



GTX BUNDLE ORDERING INFORMATION	
ITEM NUMBER	DESCRIPTION
PE-GTX-2M-BNDL1	2M GTX Single Bundle Includes: (1) 2M GTX Extrusion in Aluminum Finish, (1) 2M High Grade Diffusion Lens, (1) End Cap w/ Hole, (1) End Cap w/o Hole, (6) Mounting Clip Sets, (1) 180° Splicing Strip
PE-GTX-BK-2M-BNDL1	2M GTX BK Single Bundle Includes: (1) 2M GTX Extrusion in Black Finish, (1) 2M High Grade Diffusion Lens, (1) End Cap w/ Hole, (1) End Cap w/o Hole, (6) Mounting Clips, (1) 180° Splicing Strip
PE-GTX-2M-BNDL5	2M GTX Five Unit Bundle Includes: (5) 2M GTX Extrusions in Aluminum Finish, (5) 2M High Grade Diffusion Lenses, (5) End Caps w/ Hole, (5) End Caps w/o Hole, (30) Mounting Clips, (5) 180° Splicing strips
PE-GTX-2M-BNDLACC- BG5	Accessory Five Pack Includes: (5) End Caps w/ Hole, (5) End Caps w/o Hole, (5) Mounting Clips, (5) 180° Splicing strips
PE-GTX-BK-2M-BNDLACC- BG5	Accessory Five Pack Includes: (5) End Caps w/ Hole, (5) End Caps w/o Hole, (5) Mounting Clips, (5) 180° Splicing strips
PE-GTX-2M-BNDLLENSFR- BG5	Lens Five Pack Includes: (5) Frosted PC Lens