

SCOOP WALL WASH BUNDLE

Aluminum Tape Light Extrusion Bundle

The Scoop Wall Wash mud-in extrusion is designed to create new levels of elegance and class in lighting. This extrusion is built with a recessed area for tape light to be discreetly installed, out of the sightline, creating a full wall wash effect using the extrusion’s unique “scoop” design.

- Made of lightweight double anodized aluminum
- Maximum recommended wattage per foot of tape light < 6.9W/ft (23W/M)
- Frosted, UV & flame resistant lens protects light source while diffusing light evenly
- Field cuttable lens and extrusion
- Aluminum provides excellent heat dissipation
- End caps included for a tailored look
- Compatible with most tape light

Available Finishes



Anodized Aluminum

Compatible Tape Light

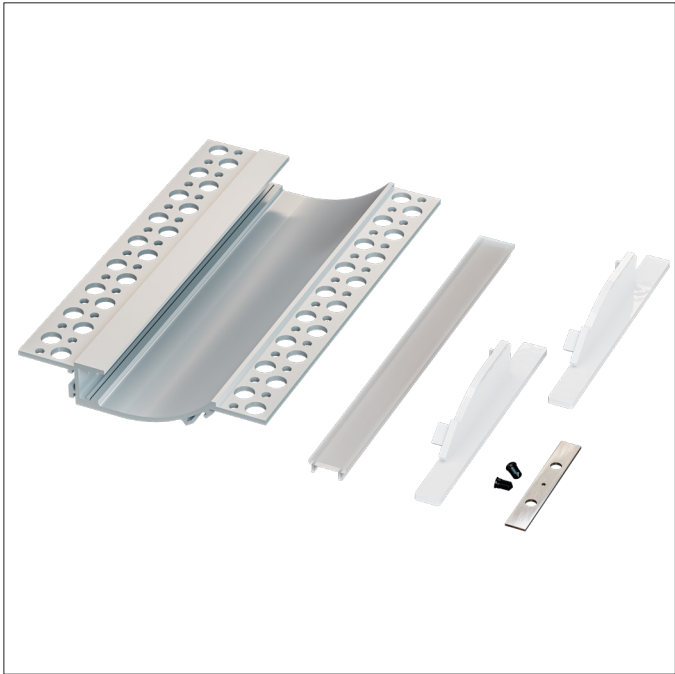
- Single Color (10mm)
- Tunable CCT (10mm)
- RGBW / RGBTW (12mm)

PROJECT:

TYPE:

LOCATION:

CATALOG NUMBER:



SCOOP WALL WASH BUNDLE ORDERING INFORMATION

ITEM NUMBER	DESCRIPTION
PE-SWW-2M-BNDL1	2M Scoop Wall Wash Single Bundle Includes: (1) 2M Scoop Wall Wash Extrusion in Aluminum Finish, (1) 2M High Grade Diffusion Lens, (1) End Cap w/ Hole, (1) End Cap w/o Hole, (1) 180° Splicing Strip

SCOOP WALL WASH DIMENSIONS

