

TRACE BUNDLE

Aluminum Tape Light Extrusion Bundle

Deeper regression produces zero dotting when used with most tape lights. This lightweight extrusion surface mounts with a full cover lens and end caps for a finished look.

- Made of lightweight double anodized aluminum
- Maximum recommended wattage per foot of tape light < 4.5W/ft (15W/M)
- Frosted, UV & flame resistant lens protects light source while evenly diffusing light
- Field cuttable lens and extrusion
- Pre-Drilled, countersunk holes
- Aluminum provides excellent heat dissipation
- End caps included for a tailored look
- Compatible with most Trulux tape light

Available Finishes



Anodized Aluminum

Compatible Tape Light

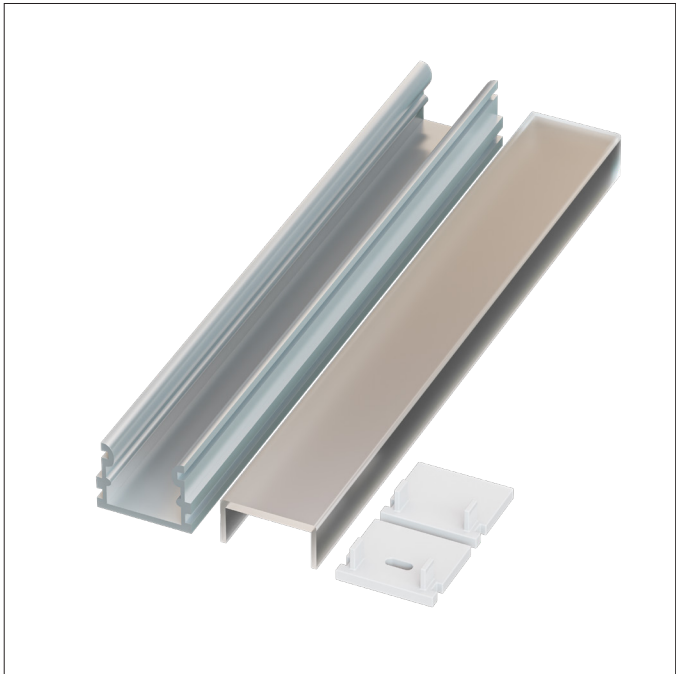
- Single Color (10mm) + HD Connectors
- Tunable CCT (10mm) + HD Connectors
- RGBW / RGBTW (12mm) + HD Connectors

PROJECT:

TYPE:

LOCATION:

CATALOG NUMBER:



TRACE BUNDLE ORDERING INFORMATION	
ITEM NUMBER	DESCRIPTION
PE-TRACE-2M-BNDL1	2M Trace Single Bundle Includes: (1) 2M Trace Extrusion in Aluminum Finish, (1) 2M High Grade Diffusion Lens, (1) End Cap w/ Hole, (1) End Cap w/o Hole, (6) Mounting Clips
PE-TRACE-2M-BNDLACC-BG5	Accessory Five Pack Includes: (5) End Caps w/ Hole, (5) End Caps w/o Hole, (5) Mounting Clips

TRACE DIMENSIONS

