

TABLE OF CONTENTS

Standard Mount.....	Page 2
Surface Mount.....	Page 3
Recessed Mount.....	Page 5
Aircraft Cable Mount.....	Page 8

EACH MODEL NUMBER CONSISTS OF THE FOLLOWING:
SERIES / SIZE / COLOUR TEMP. / INPUT

SERIES:	PLANEX PREMIUM
SIZE:	1 FT X 4 FT 2 FT X 2 FT 2 FT X 4 FT
COLOUR TEMP.:	3500K, 4000K, 5000K
INPUT:	120-347VAC, 50-60HZ



IMPORTANT SAFEGUARDS

When using electrical equipment, basic safety precautions should always be followed including the following:

READ AND FOLLOW ALL SAFETY INSTRUCTIONS.

1. Do not let power cords touch hot surfaces.
2. Do not mount near gas or electric heaters.
3. Equipment should be mounted in locations and at heights where unauthorized personnel will not readily subject it to tampering.
4. The use of accessory equipment not recommended by Beluce Canada Inc., may cause an unsafe condition, and will void the warranty.
5. Do not use this equipment for other than its intended purpose.
6. Vapor barrier must be suitable for 90°C in formats 24-l2 [only required in Canada].
7. Minimum 90°C supply conductors.
8. Suitable for DAMP LOCATIONS.
9. This product must be installed in accordance with the applicable installation code by a person familiar with the construction and operation of the product and the hazards involved.
10. Servicing of this equipment should be performed by qualified service personnel.

SAVE THESE INSTRUCTIONS!

First make sure power is turned off before starting the installation!

Connect to VAC following wiring labels:

Connect VAC wires

Labels will indicate:

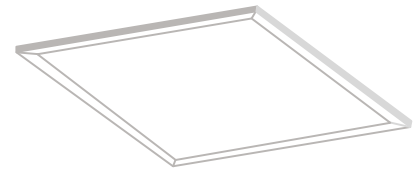
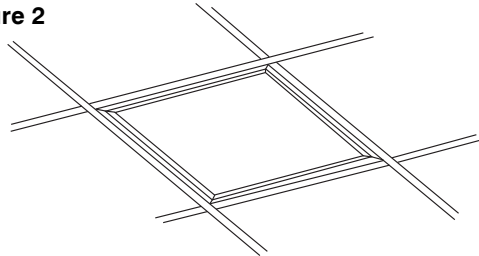
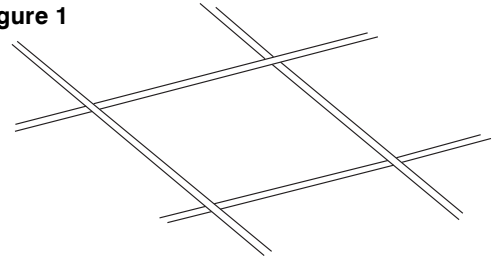
120-347VAC,
50-60Hz,
(black) Line/Hot,
(white) Neutral/Common

WARNING

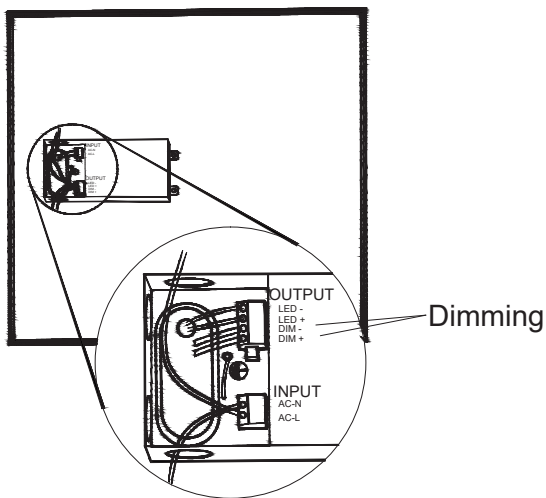
No user serviceable parts. Refer service to a qualified service technician. Read instructions prior to installing and/or operating this device. Installation should be performed by a licensed electrician/installer in accordance with local codes.

T-bar Mounting

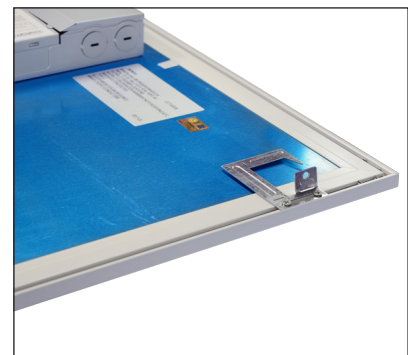
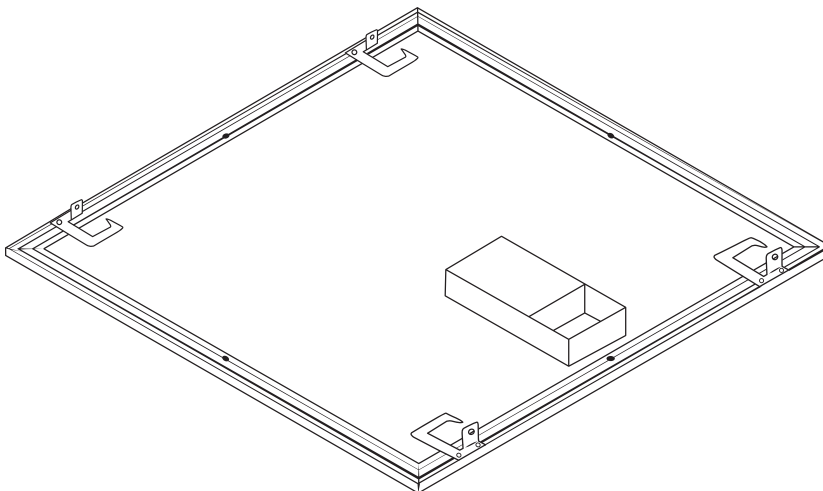
1. Insert the LED panel light into the ceiling according to figures 1 and 2.
The installation of the panel light:
As shown in figure 1, select the appropriate size of ceiling; place the panel lights directly onto the t-bar (figure 2).

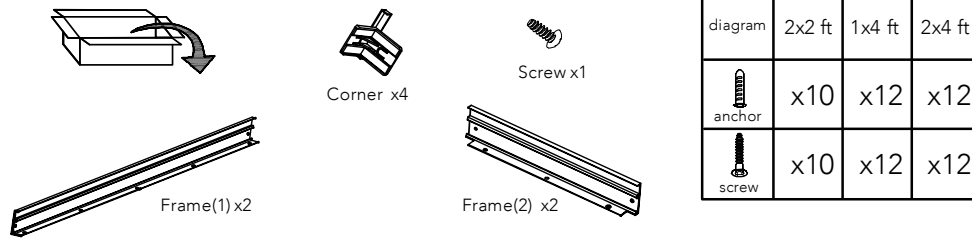
**Figure 2****Figure 1**

2. Connect wires line, neutral and ground of the input of LED driver with power supply (figure 3).
3. If the Planex needs the dimming function, the external controller needs to link with the LED driven dimming interface, as shown in figure 3.

Figure 3

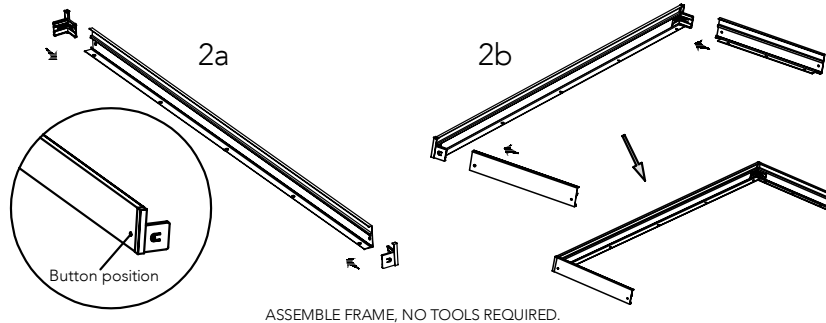
4. Secure the fixture to building structure.



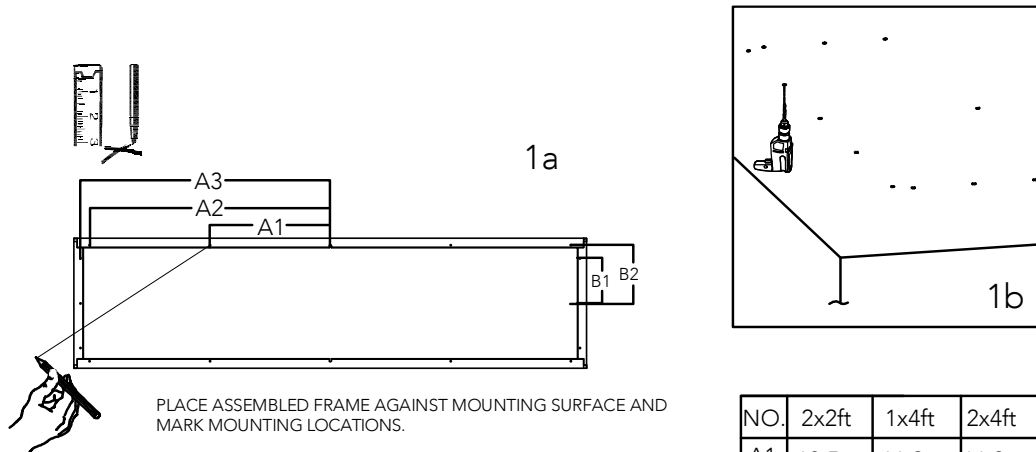


1.

OPEN BOX AND CHECK THAT THE CONTENTS ARE PRESENT ACCORDING TO THE SELECTED PLANEX® MODEL.

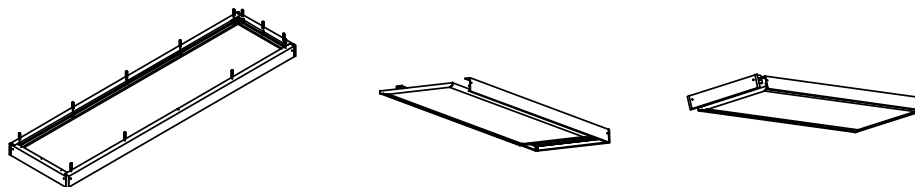


2.



NO.	2x2ft	1x4ft	2x4ft
A1	10.5in	11.2in	11.2in
A2		22.5in	22.5in
A3	11.3in	23.3in	23.3in
B1	10.1in	4.2in	10.1in
B2	11.4in	5.4in	11.4in

3.

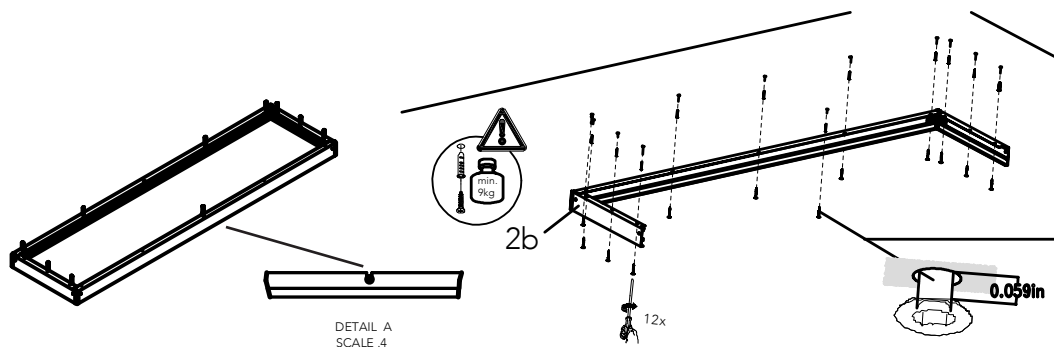


SLIDE PANEL FROM THE END, IF NOT POSSIBLE GO TO STEP 4.
DRILL MOUNTING HOLES FOR 3 SIDES, INSERT ANCHORS.
FASTEN FRAME TO MOUNTING SURFACE WITH SCREWS.
PUSH BUTTON TO RELEASE END PIECE FROM THE FRAME.

SLIDE THE PANEL INTO THE FRAME FROM THE END.

PUSH BACK END PIECE TO THE FRAME UNTIL THE BUTTON ENGAGES WITH THE HOLES ON THE FRAME.

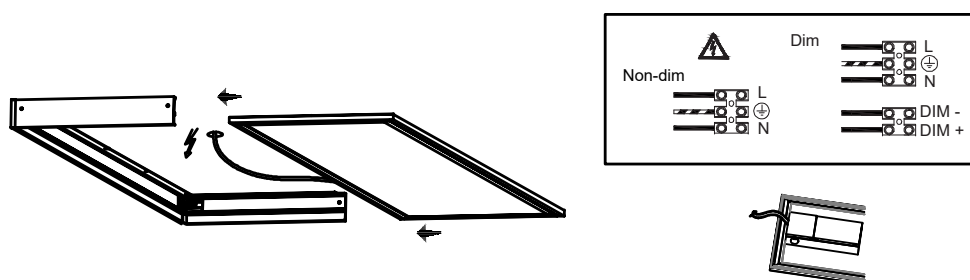
4.



DRILL MOUNTING HOLES FOR 3 SIDES, AND INSERT ANCHORS. FASTEN FRAME TO THE MOUNTING SURFACE WITH SCREWS. INSTALL ANTI SAG SCREW, LEAVE A 0.059" GAP BETWEEN THE SCREW HEAD AND THE MOUNTING SURFACE.

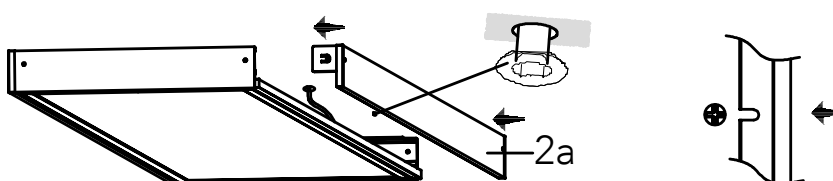
PUSH BUTTON TO RELEASE SIDE PIECE FROM THE FRAME.

5.



SLIDE THE PANEL INTO THE FRAME FROM ONE SIDE.

6.



PUSH BACK SIDE PIECE TO FRAME UNTIL THE BUTTON ENGAGES WITH THE HOLES ON THE FRAME. MAKE SURE THE NOTCH ON THE SIDE PIECE CATCHES THE ANTI SAG SCREW.



INSTALLATION

1. Find center point of fixture mounting position (avoiding studs, joist, electrical and mechanical behind the mounting surface (figure 1).
2. Cut opening in mounting surface 177.8mm (7") x 229.6mm (9") to clear power supply.
3. Trace the outline of the fixture on the mounting surface.
4. Position center of mounting clip (A + B) on fixture's outline as shown, mark then drill (2) 3/8" diameter holes per clip in the mounting surface (figure 1).
5. Use 6 clips (A) + (B) for 2' x 4' fixture (figure 1). For the 1' x 4' fixture, use 4 clips (A) + (B) (figure 1).
6. Insert 2 screws and anchors (supplied) through each mounting clip.
7. Pass anchors through holes in mounting surface and partially tighten screws.
8. Follow installation instruction sheet for electrical connections.
9. Position fixture under mounting clips and tighten screws (figure 4).
10. Cut openings in the mounting surface within the slot in clips A (2) to receive the torsion springs
11. Insert (4) torsion springs through brackets on back of trim (figure 3).
12. Squeeze both torsion springs and insert into slots in clips A. Push trim tight to mounting surface and align to fixture.

Figure 1.

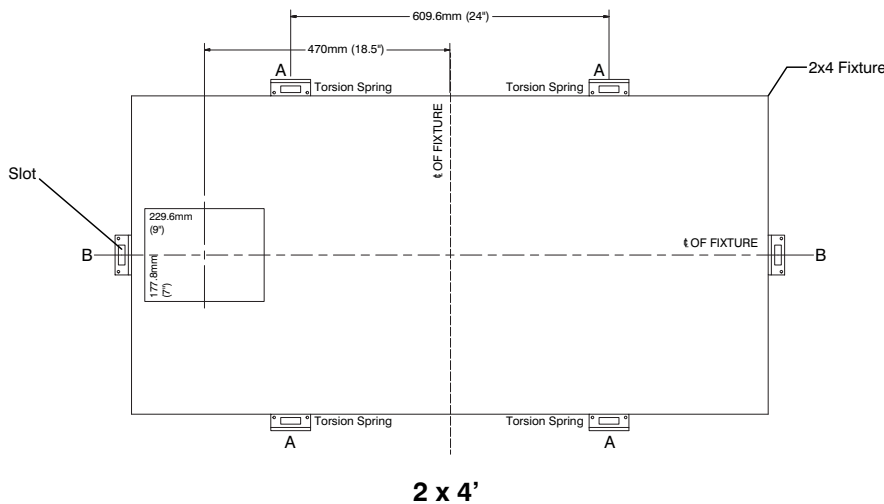
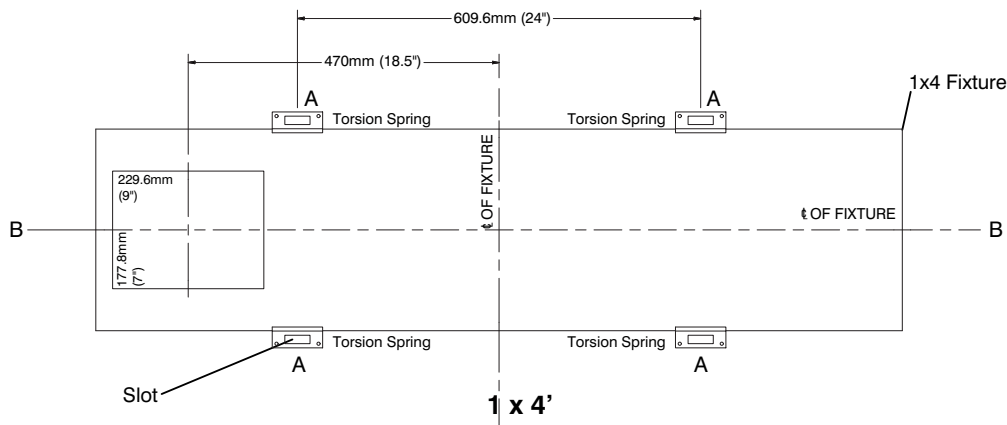
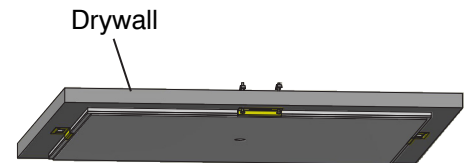


Figure 2



RECESSED MOUNT- 1 X 4, 2 X 4

Figure 3

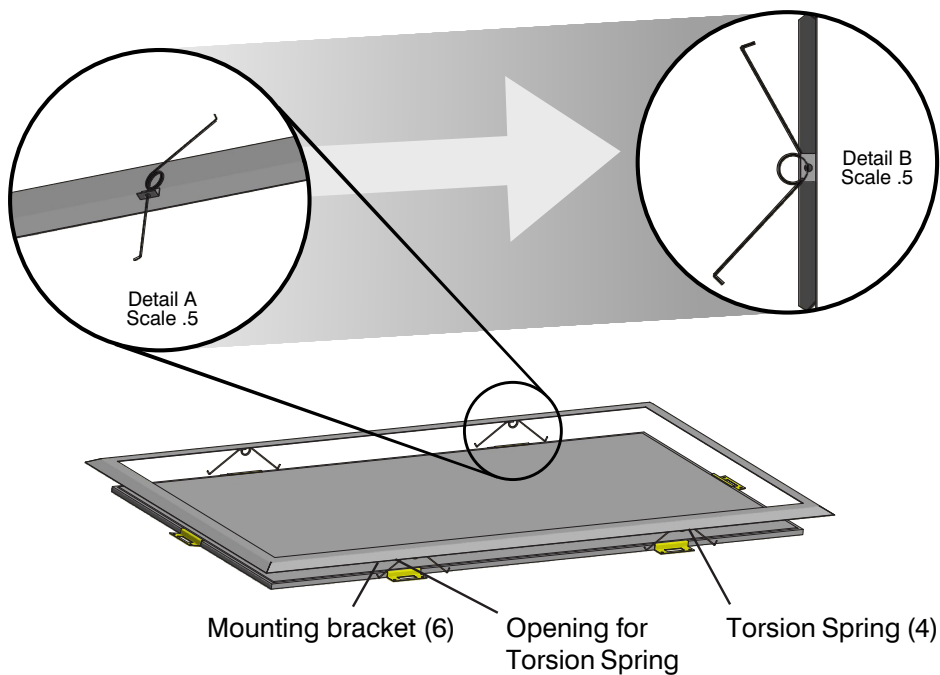
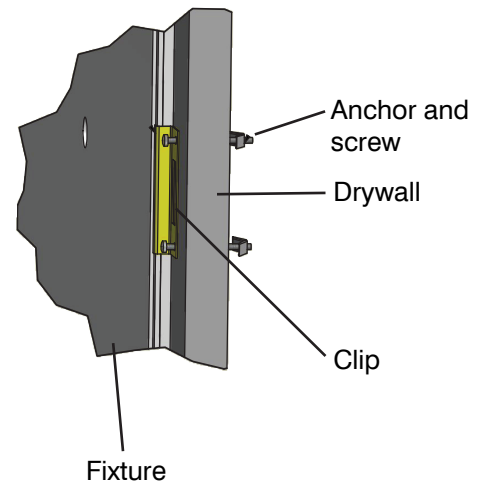


Figure 4



RECESSED MOUNT- 2 X 2

INSTALLATION

1. Find center point of fixture mounting position (avoiding studs, joist, electrical and mechanical behind the mounting surface (figure 1).
2. Cut opening in mounting surface 177.8mm (7") x 229.6mm (9") to clear power supply.
3. Trace the outline of the fixture on the mounting surface.
4. Position center of mounting clip (A + B) on center line of fixture at the outline, mark then drill (2) 3/8" diameter holes per clip in the mounting surface (figure 1).
5. Use 4 clips (A) + (B) for 2' x 2' fixture (figure 1).
6. Insert 2 screws and anchors (supplied) through each mounting clip.
7. Pass anchors through holes in mounting surface and partially tighten screws.
8. Follow installation instruction sheet for electrical connections.
9. Position fixture under mounting clips and tighten screws (figure 4).
10. Cut openings in the mounting surface within the slot in clips A (2) to receive the torsion springs
11. Insert (2) torsion springs through brackets on back of trim (figure 3).
12. Squeeze both torsion springs and insert into slots in clips A. Push trim tight to mounting surface and align to fixture.

RECESSED MOUNT- 2 X 2

Figure 1

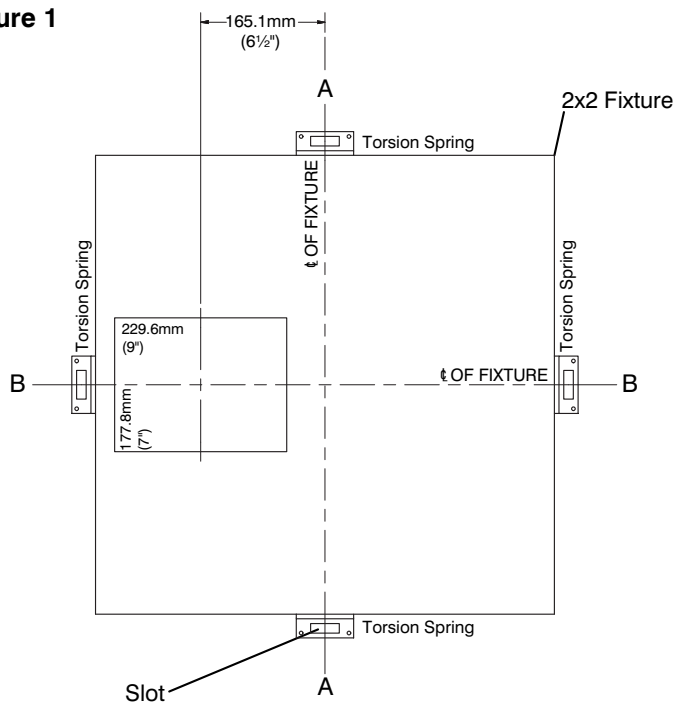


Figure 2

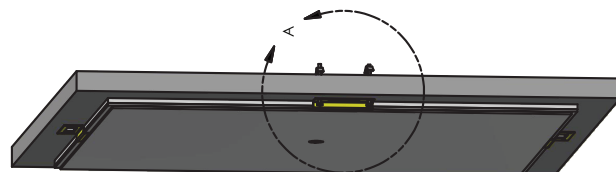


Figure 3

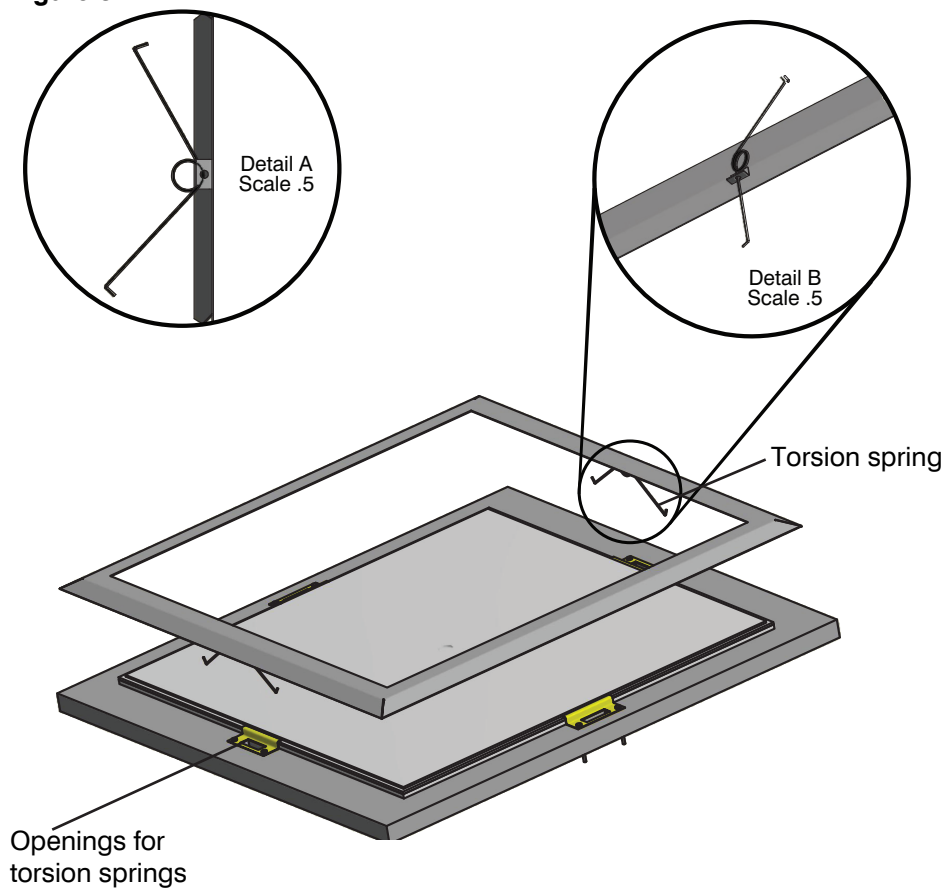
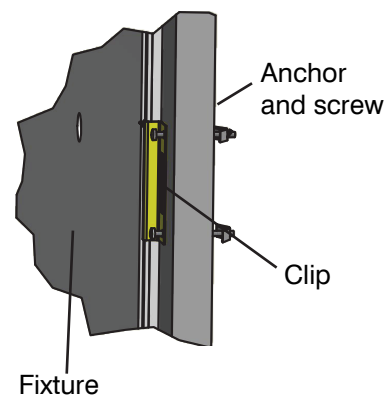


Figure 4



INSTALLATION

1. Secure triangle kit with 2 screws each on four corners (1 x 4 and 2 x 4 at approximately 609.6mm (24") apart in the centre) (figure 1).
2. Install grippers and brackets as shown in Detail A (figure 3).

Figure 1

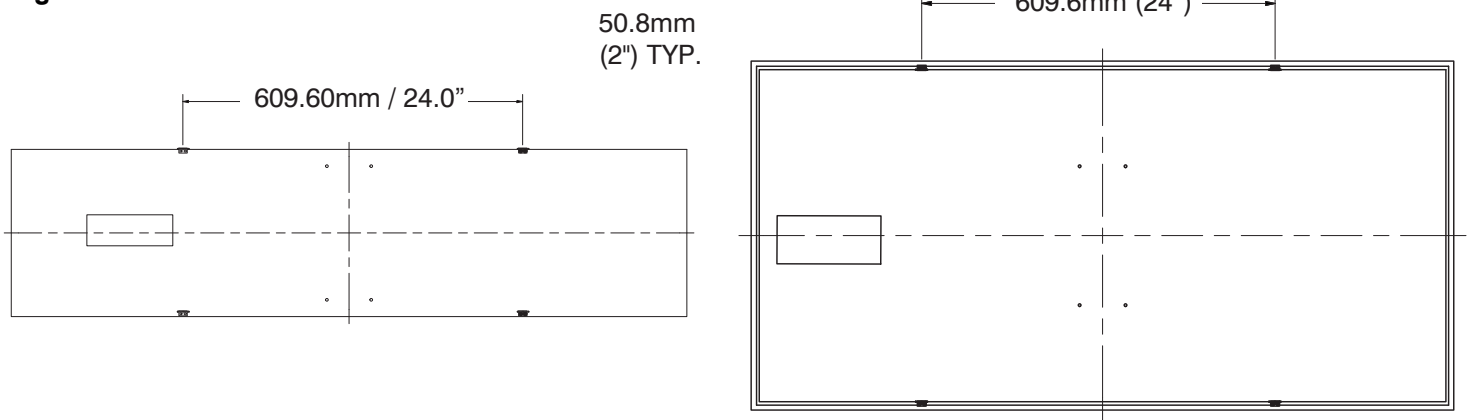


Figure 2

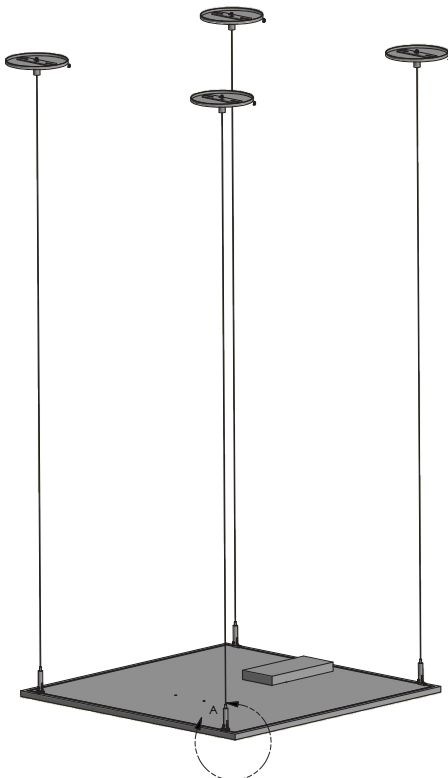
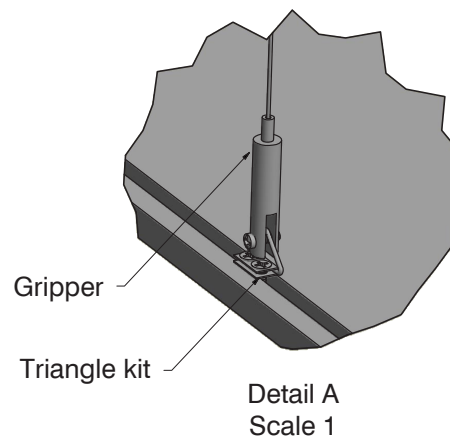


Figure 3



2 x 2 INSTALLATION INSTRUCTIONS

INSTALLATION

1. Secure triangle kit with 2 screws each on four corners.
2. Install grippers and brackets as shown in Detail A (figure 3).

Figure 1

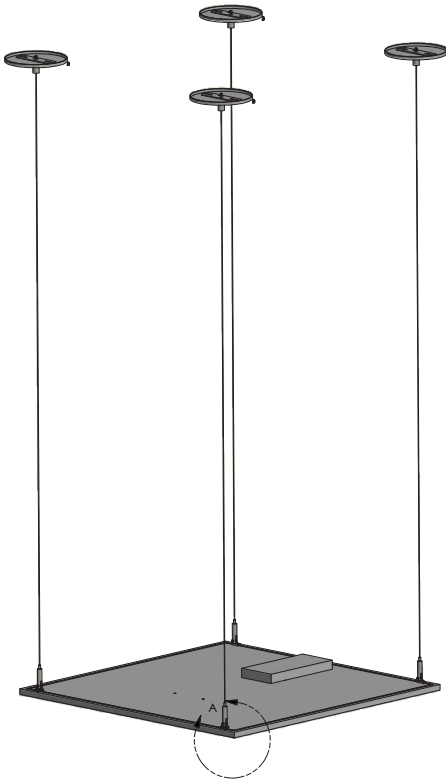


Figure 2

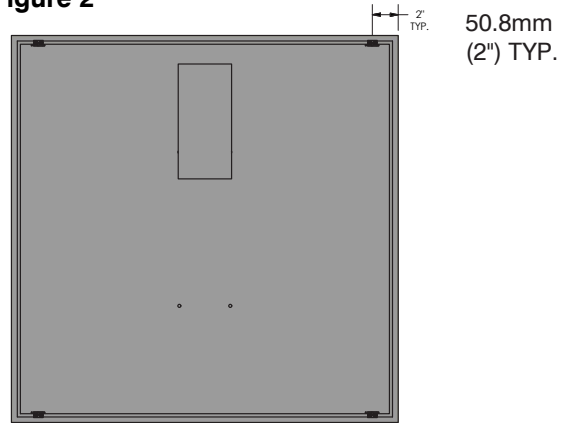


Figure 3

