

Type: _____

Project: _____

Delivered Lumens:
15,529 - 46,361 lm

Input Wattage:
109W to 323W

Efficacy:
141 lm/W - 143 lm/W

Colour Temperatures:
3500K, 4000K, 5000K

Projected Lumen Maintenance:
L₇₀ @ 50,000 hrs.



The **VALORE** is a linear LED high bay and is the ideal replacement for 4, 6 and 8 lamp luminaires

The **VALORE** is the ideal linear LED high bay for value conscious installations or retro-fit for fluorescent linear high bays in warehouses, aisle lighting for retail big box stores, logistic centers and open ceiling environments

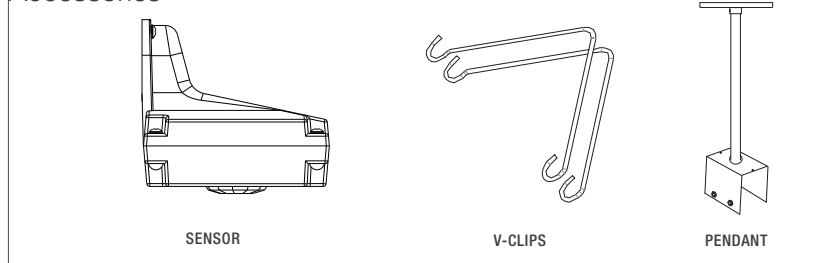
VALORE is available in 2ft and 4ft versions with lumen packages ranging from 15,000 to 45,000

Configurations

MODEL	LUMENS	COLOUR TEMP	INPUT	MOUNTING	OPTIONS
V2 (2ft)	LO (15,529)	WT35* (3500K)	120-277V	AC ¹ (aviation cable)	EOS05 (PIR ON/OFF End Mount, 347 15-40' MH)
	HO (22,247)	WT40 (4000K)	347V	PK ² (pendant kit)	EOS08 (PIR ON/OFF End Mount, 347 20' MH)
V4 (4ft)	LO (30,315)	WT50 (5000K)			EOS09 (PIR ON/OFF End Mount, 120-277 40' MH)
	HO (44,959)				

NOTE¹: specify length for AC: 50", 72", 100", fully adjustable; **NOTE²:** PK option available in 18", 24", 30", 36" and 48"

Accessories



HOUSING:

Durable steel construction with corrosion resistant white powder coat (RAL 9010) finish.

POWER LINE/FEED:

72", 18AWG, 300 / 600V, 5 conductor cord, 1/2" pre-stripped leads for quick in-field connection. AC Input: 120-227V or 347V, 50-60Hz.

DIMMING:

0 - 10V dimming is standard (compatible with most dimming systems, contact factory for more information).

DIFFUSER:

Polycarbonate frosted lens eliminates glare and provides even light distribution.

OPERATING TEMPERATURE:

The ambient operating temperature is -20°C to 40°C.

MOUNTING:

Unit comes standard with V-clips for dual point chain mount. AC (aviation cable) optional. PK (pendant kit) mount is also available.

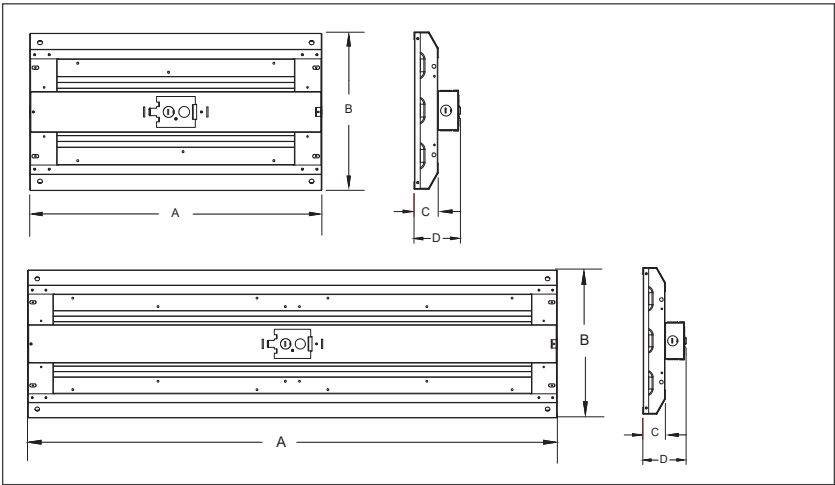
WARRANTY:

5 year LED warranty, see website for full warranty details.

Dimensions

MODEL	A	B	C	D
V2-LO	605mm (23.8")	320mm (13.8")	50mm (2")	95.9mm (3.8")
V2-HO	605mm (23.8")	440mm (17.3")	50mm (2")	95.9mm (3.8")

MODEL	A	B	C	D
V4-LO	1165mm (45.9")	320mm (13.8")	50mm (2")	95.9mm (3.8")
V4-HO	1165mm (45.9")	440mm (17.3")	50mm (2")	95.9mm (3.8")



Energy Chart

MODEL	EFFICACY	WATTAGE	LUMEN OUTPUT	CRI	*L70 HOURS
V2-LO-WT35-120-277V	141 lm/W	109	15,529	84	50,000+
V2-LO-WT40-120-277V	143 lm/W	110	15,792	84	50,000+
V2-LO-WT50-120-277V	149 lm/W	110	16,406	84	50,000+
V2-HO-WT35-120-277V	132 lm/W	167	22,247	83	50,000+
V2-HO-WT40-120-277V	135 lm/W	168	22,616	85	50,000+
V2-HO-WT50-120-277V	135 lm/W	167	22,624	85	50,000+
V4-LO-WT35-120-277V	134 lm/W	226	30,315	83	50,000+
V4-LO-WT40-120-277V	135 lm/W	228	30,809	85	50,000+
V4-LO-WT50-120-277V	136 lm/W	228	31,288	85	50,000+
V4-HO-WT35-120-277V	140 lm/W	323	44,959	83	50,000+
V4-HO-WT40-120-277V	143 lm/W	323	45,851	85	50,000+
V4-HO-WT50-120-277V	143 lm/W	323	46,361	85	50,000+