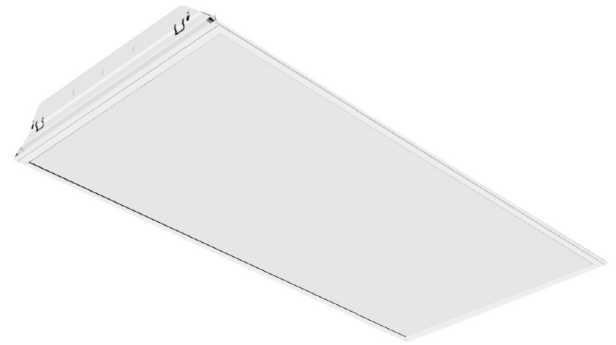


|               |
|---------------|
| Project:      |
| Type:         |
| Date:         |
| Product Code: |
| Approval:     |



## BLR

Superior-grade, recessed low profile lay-in T-Bar luminaire. Its ideal for indoor use where aesthetics, energy-efficiency and T-Bar mounting is essential. Its low-profile body is ideally suited for shallow, or obstructed plenum installations.

## FEATURES

- L70 of over 120,000 hours
- Diffuser provides a uniform lighting surface
- Type IC
- 0 - 10V dimming standard

## OPTIONS

- Available in 3000K, 3500K, 4000K, 5000K, and 6500K
- Lumen packages are available from 2,000L to 8,000L
- Available in 1x4, 2x4 and 2x2 dimensions
- Wire guard
- 90 CRI available
- NEDAP wireless controls

## APPLICATIONS

- Hospitals
- Offices
- Schools

## OPTICS

Pre-painted body in high-reflectance white. Frosted flat lens provides even light distribution.

## ELECTRICAL

All components are UL recognized. The fixture is available in 120 - 277V and 347V.

## MOUNTING

Holes provided for chain or hanger wire mounting support for T-Bar ceilings.

## CONSTRUCTION

Pre-painted, high reflectance white body is precision bent for added strength and rigidity. 0.030" nominal thick steel. Hinged door frame with frosted flat acrylic lens for even light distribution. Shallow fixture design provides a clean appearance for many environments.

## APPROVALS

- ETL Listed

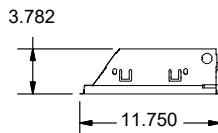
## WARRANTY

- Standard 5 year system, and 10 year LED warranty

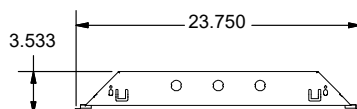
## PRODUCT DIMENSIONS

### End View

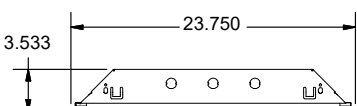
1x4



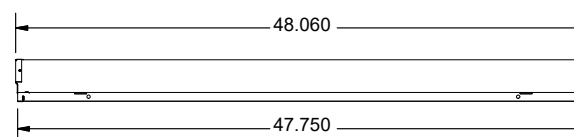
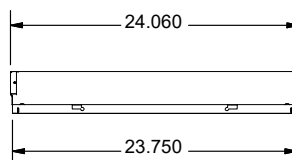
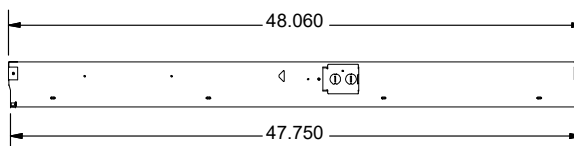
2x2



2x4



### Side View



PRODUCT KEY

| Fixture Type | Fixture Size | Lumen Output | CRI        | Colour Temp | Driver Voltage | Options   |
|--------------|--------------|--------------|------------|-------------|----------------|---|
| BLR          |              |              |            |             |                |   |
|              | 1x4, 2x2     | 2            | 8 - 80 CRI | 30 - 3000 K | UNV            | <b>Lenses</b><br>L15 - K12 Lens<br>L19 - Frosted Lens       |
|              |              | 3            | 9 - 90 CRI | 35 - 3500 K | 347            |   |
|              |              | 4            |            | 40 - 4000 K |                | <b>Wire Guard</b><br>G1 - White Wire Guard                  |
|              |              | 4            |            | 50 - 5000 K |                | <b>Wireless Controls</b><br>WC1 - NEDAP Wireless Controls   |
|              | 2x4          | 6            |            | 65 - 6500 K |                | <b>Flange Kits</b><br>H14 - Flange for Drywall Installation |
|              |              | 8            |            |             |                |   |

WATTAGE CHART

| BLR Wattage Chart |              |                 |        |              |                 |        |              |                 |
|-------------------|--------------|-----------------|--------|--------------|-----------------|--------|--------------|-----------------|
| Length            | Lumen Output | Fixture Wattage | Length | Lumen Output | Fixture Wattage | Length | Lumen Output | Fixture Wattage |
| 1x4               | 2            | 18.1            | 2x2    | 2            | 18.1            | 2x4    | 4            | 35.5            |
|                   | 3            | 27.7            |        | 3            | 27.7            |        | 6            | 55.4            |
|                   | 4            | 39.3            |        | 4            | 39.3            |        | 8            | 73.4            |

\* Based on UNV voltage  
 \* Based on an L15 lens  
 \* Based on 4000K