

Project:
Type:
Date:
Product Code:
Approval:



## BRLR

The BRLR is an LED retrofit kit offering up to 50% in energy savings over a traditional T8 fixture. It has been designed to convert existing 2x2, 1x4 and 2x4 recessed troffers from T8 or T12 to LED. Its flexibility and simple installation make it easy to take advantage of improved energy-efficiency and performance.

## FEATURES

- L70 of 200,000 hours
- 0 - 10V dimming standard
- Fixture lensing provides an even light distribution through the use of 120 degree angle LED chips and a specially designed lens
- 10 minute installation time

## OPTIONS

- Lumen packages are available from 2,000L to 6,000L
- Available in 3000K, 3500K, 4000K, 5000K, and 6500K
- 90 CRI available

## APPLICATIONS

- Existing fluorescent 2x2, 1x4 and 2x4 recessed troffers

## OPTICS

High-efficiency frosted diffuser maximizes light distribution while providing diffusion of LED point sources.

## ELECTRICAL

All components are UL recognized. This fixture is available in 120 - 277V and 347V.

## MOUNTING

Holes provided for mounting inside existing fluorescent recessed troffers using self-tapping screws.

## CONSTRUCTION

- Pre-painted white steel fixture components are precision bent for added strength and rigidity
- Shallow design for ease of installation and a clean, professional look

## APPROVALS

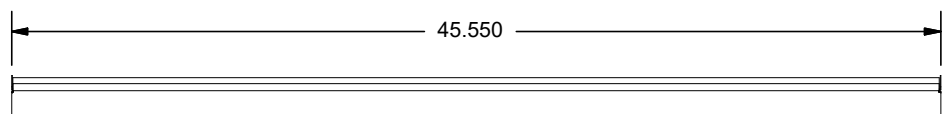
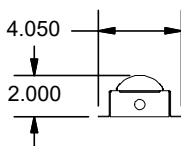
- ETL Listed
- DLC Listed

## WARRANTY

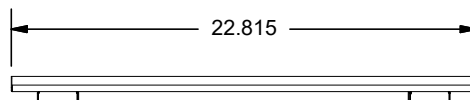
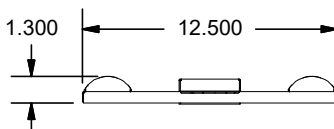
- Standard 5 year system, and 10 year LED warranty

## PRODUCT DIMENSIONS

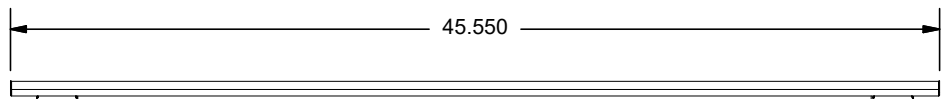
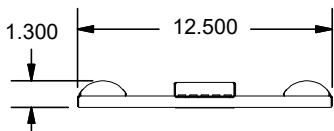
1x4 Dimensions



2x2 Dimensions



2x4 Dimensions



\*specifications may change without notice



## PRODUCT KEY

Fixture Type	Fixture Size	Lumen Output	CRI	Colour Temp	Driver Voltage
BRLR					
		2	8 - 80 CRI	30 - 3000 K	UNV
		2.5	9 - 90 CRI	35 - 3500 K	347
	1x4, 2x2	3		40 - 4000 K	
		3.5		50 - 5000 K	
		4		65 - 6500 K	
		4			
		4.5			
	2x4	5			
		5.5			
		6			

## WATTAGE CHARTS

BRLR Wattage Chart				
Length	Lumen Output	Actual Lumen Output	Fixture Wattage	Lumens per Watt
1x4	2.0	2,120	17.52	121.0
	2.5	2,634	21.70	121.4
	3.0	3,147	25.87	121.7
	3.5	3,661	30.05	121.9
	4.0	4,130	35.80	115.4

Length	Lumen Output	Actual Lumen Output	Fixture Wattage	Lumens per Watt
2x2	2.0	2,071	17.45	118.7
	2.5	2,573	21.61	119.8
	3.0	3,075	25.77	119.3
	3.5	3,577	29.93	119.5
	4.0	4,079	34.08	119.7

Length	Lumen Output	Actual Lumen Output	Fixture Wattage	Lumens per Watt
2x4	4.0	4,384	34.03	128.9
	4.5	4,804	37.71	127.4
	5.0	5,224	41.38	126.3
	5.5	5,644	45.06	125.3
	6.0	6,064	48.74	124.4

\* Based on UNV voltage

\* Based on an Frosted lens

\* Based on 4000K