

Project:
Type:
Date:
Product Code:
Approval:



BRLS

The BRLS is an LED retrofit kit offering up to 50% in energy savings over a standard T8 fixture. It has been designed to convert existing 4ft and 8ft commercial or industrial strip fixtures from T8 or T12 to LED. Its flexibility and simple installation make it easy to take advantage of improved energy-efficiency and performance.

FEATURES

- L70 of 160,000 hours
- 0 - 10V dimming standard
- Fixture lensing provides an even light distribution through the use of 120 degree angle LED chips and a specially designed lens
- 7-10 minute installation time

OPTIONS

- Lumen packages are available from 2,000L to 8,000L
- Available in 3000K, 3500K, 4000K, 5000K, and 6500K
- 90 CRI available

APPLICATIONS

- Retrofitting existing fluorescent commercial and industrial style fixture

WARRANTY

- Standard 5 year system, and 10 year LED warranty

OPTICS

High-efficiency frosted diffuser maximizes light distribution while providing diffusion of LED point sources.

ELECTRICAL

All components are UL recognized. This fixture is available in 120 - 277V and 347V.

MOUNTING

Holes provided for mounting inside existing fluorescent strip fixture using self-tapping screws

CONSTRUCTION

- Pre-painted white steel fixture components are precision bent for added strength and rigidity
- Shallow design for ease of installation and a clean, professional look

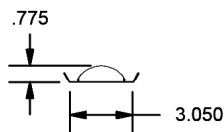
APPROVALS

- ETL Listed
- DLC Listed

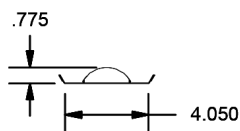
PRODUCT DIMENSIONS

End View

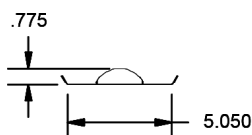
2.75/3W Cover



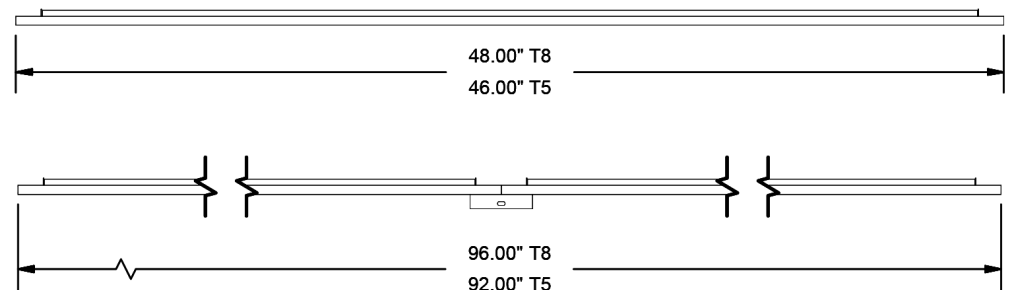
3.25/4W Cover



4.25/5W Cover



Side View



*specifications may change without notice



PRODUCT KEY

Fixture Type	Fixture Length	Fixture Width	Lumen Output	CRI	Color Temp	Driver Voltage
BRLS	-	-	-	L -	-	-
		2.75/3W	2	8 - 80 CRI	30 - 3000 K	UNV
		3.25/4W	2.5	9 - 90 CRI	35 - 3500 K	347
	4'	4.25/5W	3		40 - 4000 K	
			3.5		50 - 5000 K	
			4			
			4			
			5			
	8'		6			
			7			
			8			

WATTAGE CHARTS

BRLS Wattage Chart									
Length	Lumen Output	Actual Lumen Output	Fixture Wattage	Lumens per Watt	Length	Lumen Output	Actual Lumen Output	Fixture Wattage	Lumens per Watt
4'	2.0	2,121	17.86	118.8	8'	4.0	4,343	32.42	118.7
	2.5	2,637	22.35	118.0		5.0	5,274	39.63	119.8
	3.0	3,167	27.02	117.2		6.0	6,334	47.92	119.3
	3.5	3,697	31.76	116.4		7.0	7,395	56.33	119.5
	4.0	4,146	35.87	115.6		8.0	8,445	64.78	119.7

* Based on UNV voltage

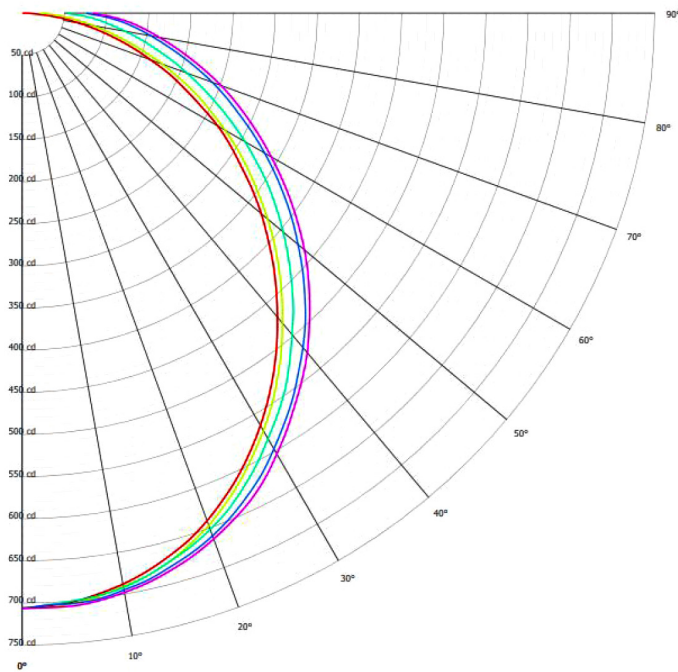
* Based on a Frosted lens

* Based on 4000K

PHOTOMETRIC DATA

BRLS-4'-2.5L-830-UNV

Candela Polar Plot



Cone of Light

Mtg Height	Light Level	Beam Diameter
6 ft	20 fc	17 ft
8 ft	11 fc	23 ft
10 ft	7 fc	29 ft
12 ft	5 fc	35 ft
15 ft	3 fc	44 ft