

<b>Project:</b>
<b>Type:</b>
<b>Date:</b>
<b>Product Code:</b>
<b>Approval:</b>



\* See notes below

### BLSP

The BLSP is an LED linear strip fixture designed for surface and suspended mounting. It is well suited for indoor use where high efficiency, row-mountable task lighting is required. Its narrow strip design and modern profile make it an ideal fixture for task lighting applications.

### FEATURES

- Full range of voltage options from 120-277V and 347V
- Narrow strip design allows for a sleek and modern look
- Specially designed extruded lens
- L70 of 200,000 hours

### OPERATING TEMPERATURE

- -20°C to 35°C

### OPTIONS

- 2', 4' and 8' lengths available
- 0 – 10V dimming standard
- Dimmable up to 10% light output
- Row-mounting available
- Available in 3000K, 3500K, 4000K, and 5000K

### WARRANTY

- Standard 5 year system, and 10 year LED warranty

### APPLICATIONS

- Display Cabinets
- Manufacturing
- Task Lighting
- Retail Stores

### OPTICS

High-efficiency diffuser maximizes light distribution while providing diffusion of LED point sources and reducing glare

### ELECTRICAL

All components are UL recognized

### MOUNTING

Holes provided for surface and suspended mounting, as well as knock outs for row-mounting

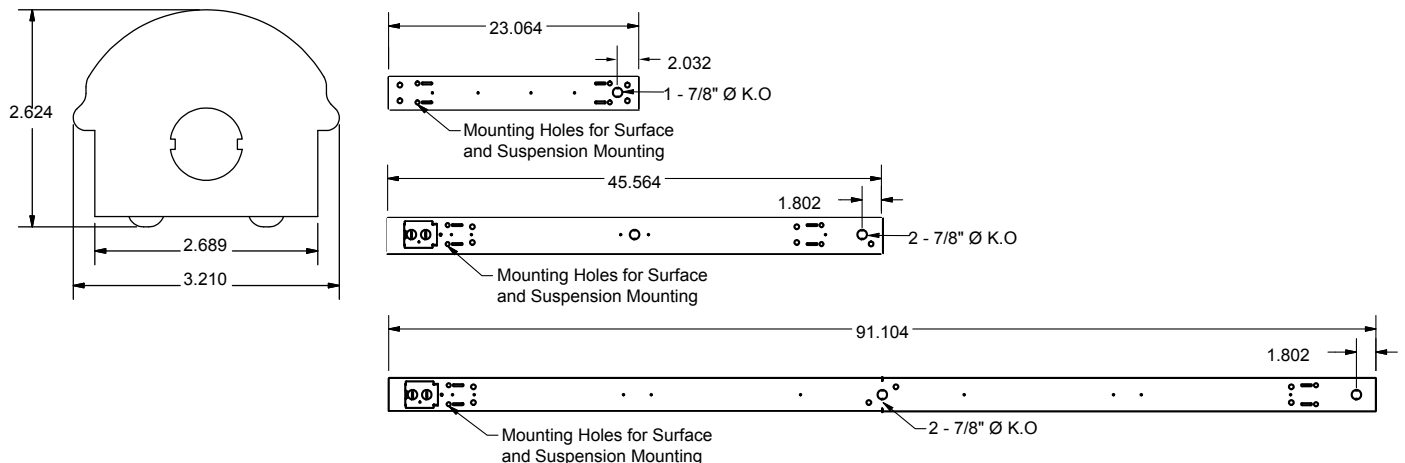
### CONSTRUCTION

- Pre-painted white steel fixture components are precision bent for added strength and rigidity
- Spot welded steel end caps for added rigidity
- Access panel provided for easy wiring
- Shallow fixture design for ease of installation and a clean, professional look

### APPROVALS

- Damp Rated
- ETL Certified
- DLC Certified

### PRODUCT DIMENSIONS



\*SPECIFICATIONS MAY CHANGE WITHOUT NOTICE\*

\*NOT ALL PRODUCTS ARE DLC LISTED. CONSULT FACTORY FOR MORE DETAILS\*



**PRODUCT KEY**

Fixture Type	Fixture Size	Lumen Output	CRI & Colour	Driver Voltage	Options
BLSP	-	-	L -	-	-

2'	1.25	830	UNV
	1.75		
	2.25		
	2.75		
4'	2.5	835	347
	3.5		
	4.5		
	5.5		
	6.5		
	7.5		
8'	5	840	850
	7		
	9		
	11		
	13		
	15		

**Options**

<b>Lenses</b> L18 - Frosted Lens  <b>Wire Guard</b> G1 - Curved White Wire Guard  <b>Temperature</b> T0 - -40°C LED Driver	<b>Mounting</b> M1 - V-Hangers M3 - Aircraft Cable "Y-Toggle", 5 FT M7 - Row Mounting, End of Row M8 - Row Mounting, Middle of Row M23 - Aircraft Cable "Y-Toggle", 10 FT M24 - Single 3/4" Pendant Mount	<b>Cords</b> W3xx - 16/3 White Cord, Specify Length W4xx - 16/3 Black Cord, Specify Length W8xx - Power Cord 16/3, Specify Length and 15amp Plug  <b>Motion Sensor</b> W53 - Snap in Motion Sensor
---	---	--

\* Consult BJ Take for more motion sensor options and fixture options

BLSP Wattage Chart								
Length	Lumens	Wattage	Length	Lumens	Wattage	Length	Lumens	Wattage
2'	1.25	9	4'	2.5	22	8'	5.0	42
	1.75	13		3.5	30		7.0	59
	2.25	18		4.5	38		9.0	78
	2.75	23		5.5	43		11.0	86
				6.5	52		13.0	103
				7.5	60		15.0	120

\* Based on UNV voltage

\* Based on 4000K

\* Actual wattages may vary

\*SPECIFICATIONS MAY CHANGE WITHOUT NOTICE\*

\*NOT ALL PRODUCTS ARE DLC LISTED. CONSULT FACTORY FOR MORE DETAILS\*