



greenchoice

11/16

LED-SW4P

# LED - Recessed Downlight



QUESTIONS OR CONCERNS CONTACT AT:

1-800-265-1833 (English) / 1-800-567-2513 (French) Monday through Friday 8:00 AM to 5:00 PM E.S.T.



INSTRUCTIONS PERTAINING TO RISK OF FIRE OR INJURY TO  
PERSONS READ ALL INSTRUCTIONS  
**IMPORTANT SAFETY  
INSTRUCTIONS**  
SAVE THESE INSTRUCTIONS

## TOOLS AND MATERIALS REQUIRED:



Phillips  
Screwdriver



Wire Cutters

Wiring supplies  
as required by  
electrical code



Pliers



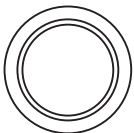
Drill

## SAFETY PRECAUTIONS:

1. **TURN OFF ELECTRICAL POWER BEFORE STARTING INSTALLATION OF LIGHT FIXTURE.**
2. **THIS PRODUCT MUST BE INSTALLED IN ACCORDANCE WITH THE APPLICABLE INSTALLATIONS CODE BY A PERSON FAMILIAR WITH THE CONSTRUCTION AND OPERATION OF THE PRODUCT AND THE HAZARDS INVOLVED.**
3. **CAUTION – RISK OF ELECTRIC SHOCK OR FIRE. CONSULT A QUALIFIED ELECTRICIAN TO ENSURE CORRECT BRANCH CIRCUIT CONDUCTOR.**

## PACKAGE CONTENTS

PART	DESCRIPTION	QTY
A	LED disc light	1
B	Wire nut	3



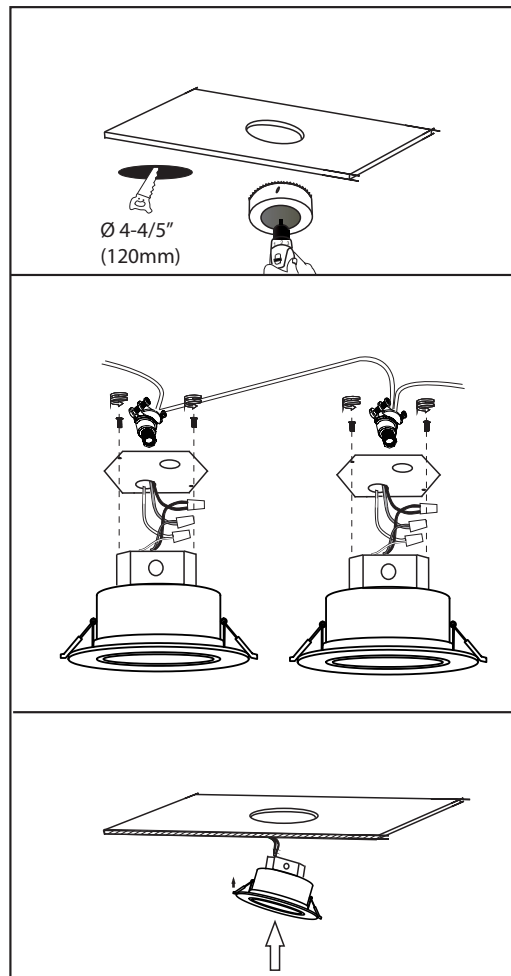
A



B

This LED light is suitable to be dimmed by  
LEVITON# 6672, LEVITON# 6633.

Max # of Lamps per 600W Dimmer: 6 pcs



1. Drill hole in ceiling.  
(thickness of the sheetrock  $\geq$  1/2").

2. Knock blind knockout open in your required position and install the Romex connector if required (1/2" (not included)). Open the top cover of the J-box by unscrewing the screws. Connect supply wires to wires on fixture with wire nuts. Connect white to white, black to black, green or bare copper wire to bare copper wire. Attach the J-box top cover and secure with self-taping screws. If wiring to another light, also connect white to white, black to black, green or bare copper wire to bare copper wire.

3. Bring the light up to the hole, hold in the spring clips and push the light into the ceiling. It is easier to do one spring at one time.

Made in China

Imported By: 2157 Parkedale Ave., Brockville, Ontario, K6V 5V6, Tel: (613) 342-5424, Fax: (800) 263-4598