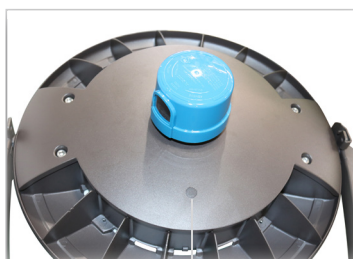


Pole Top Area Light

35W | CCT Tunable | 120-277V



Elegant look and design. Tunable 3000K/4000K/5000K
Ideal for parking lots, pathways, parks, retail settings, and more



CCT Selector Switch

Rotatable 30°

Twist Lock Photocell Receptacle
and Photocell Included
Shorting cap available (sold separately)



Polyester
Powder-Coat Finish
(Bronze)

High Efficiency Optics
with type 5 distribution

Instant Start

Fits Up To 3" OD pole

Optional Accessories (sold separately)
Shorting Cap (JL-2080)



TECHNICAL DATA



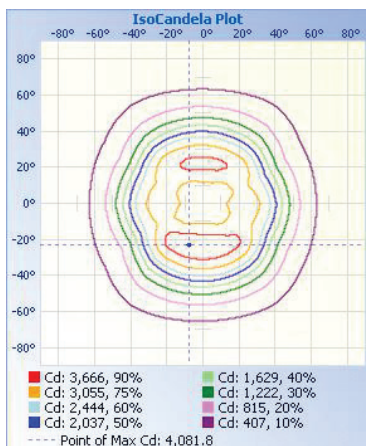
LIGHT SPECIFICATIONS

Lumens	3,675 lm
Efficacy	117.84 lm/W
CCT	3000K / 4000K / 5000K
CRI	80
Distribution	90°
L70 Life	50,000 hours
Warranty	10-year

APPROVALS AND LISTINGS

cUL	E482965
DLC Premium	PLFN6DIB44CG

ISOCANDELA PLOT



ILLUMINANCE AT A DISTANCE

	Center Beam fc	Beam Width
17.0ft	10.4 fc	29.6 ft 22.5 ft
34.0ft	2.59 fc	59.1 ft 45.0 ft
51.0ft	1.15 fc	88.7 ft 67.5 ft
68.0ft	0.65 fc	118.3 ft 90.0 ft
85.0ft	0.41 fc	147.8 ft 112.5 ft
102.0ft	0.29 fc	177.4 ft 135.0 ft

■ Vert. Spread: 82.0°
■ Horiz. Spread: 67.0°

ELECTRICAL

Wattage	35W
Voltage	120-277V
Power Factor	0.9
THD	15%
Operating temp	-40 to 60°C

CONSTRUCTION

Housing	Aluminum alloy
Finish	Polyester powder-coat
Colour	Bronze
IP rating	IP65
Weight	14.33 lbs
Carton qty	1

ACCESSORIES (SOLD SEPARATELY)

Shorting Cap	JL-2080
--------------	---------

DIMENSIONS

