

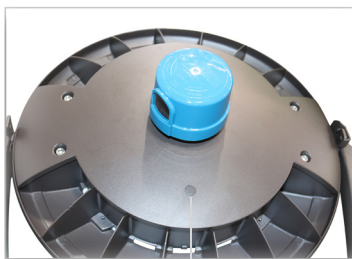
# Pole Top Area Light

55W | CCT Tunable | 120-277V



Elegant look and design. Tunable 3000K/4000K/5000K

Ideal for parking lots, pathways, parks, retail settings, and more



CCT Selector Switch

Rotatable 30°

Twist Lock Photocell Receptacle  
and Photocell Included

Shorting cap available (sold separately)



Polyester  
Powder-Coat Finish  
(Bronze)

High Efficiency Optics  
with type 5 distribution

Instant Start

Fits Up To 3" OD pole

Optional Accessories (sold separately)

Shorting Cap (JL-2080)



## TECHNICAL DATA



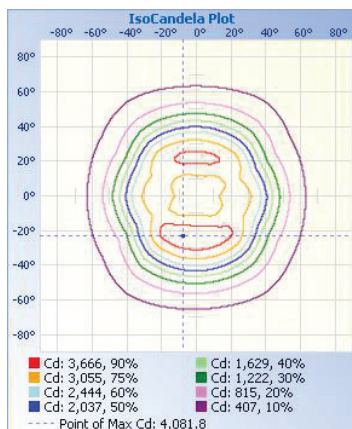
### LIGHT SPECIFICATIONS

Lumens	6,214 lm
Efficacy	113.52 lm/W
CCT	3000K / 4000K / 5000K
CRI	80
Distribution	90°
L70 Life	50,000 hours
Warranty	10-year

### APPROVALS AND LISTINGS

cUL	E482965
DLC	PLT6TANUW6Y6

### ISOCANDELA PLOT



### ILLUMINANCE AT A DISTANCE

	Illuminance at a Distance	
	Center Beam fc	Beam Width
17.0ft	10.4 fc	29.6 ft 22.5 ft
34.0ft	2.59 fc	59.1 ft 45.0 ft
51.0ft	1.15 fc	88.7 ft 67.5 ft
68.0ft	0.65 fc	118.3 ft 90.0 ft
85.0ft	0.41 fc	147.8 ft 112.5 ft
102.0ft	0.29 fc	177.4 ft 135.0 ft

■ Vert. Spread: 82.0°  
■ Horiz. Spread: 67.0°

### ELECTRICAL

Wattage	55W
Voltage	120-277V
Power Factor	0.9
THD	15%
Operating temp	-40 to 60°C

### CONSTRUCTION

Housing	Aluminum alloy
Finish	Polyester powder-coat
Colour	Bronze
IP rating	IP65
Weight	14.33 lbs
Carton qty	1

### ACCESSORIES (SOLD SEPARATELY)

Shorting Cap	JL-2080
--------------	---------

### DIMENSIONS

