

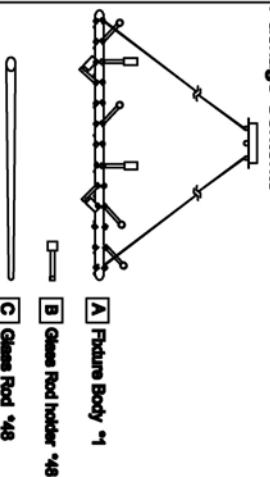
Assembly Instruction Sheet #S-1154P42 For Style 1154P42

Tools Required: Flathead screwdriver, Phillips screwdriver, pliers, wire cutters, wire strippers, electrical tape, safety glasses.
Light Source (12) G8 40W Medium (Not Include).
Estimated Assembly Time: 10-20 minutes
Preparation: Identify and inspect all parts before beginning installation. Check package content list and diagrams below to be sure all parts are present. If any parts are missing or damaged, do not attempt to assemble, install, or operate the fixture. Contact customer service for replacement parts.

A Warnings and Cautions

Turn off electricity at circuit breaker or main fuse box before installation. Consult a licensed electrician if in doubt.
These instructions are provided for your safety. It is very important you read them completely before installing the fixture.
We strongly recommend that a licensed, professional electrician perform the installation.
Disconnect fixture from power source before replacing bulbs. Make sure bulbs are given sufficient time to cool before removal.

Package Contents



Hardware Contents	
PART	DESCRIPTION QUANTITY
AA	Mounting Bails 2pcs
BB	Wire Nut 2pcs
CC	Outlet Box Screw 2pcs
DD	Mounting Screw 2pcs
EE	Crossbar 1pcs

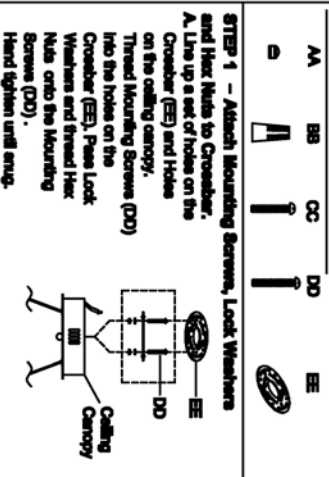
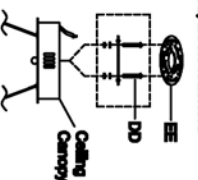


Figure 1

STEP 1 - Attach Mounting Screws, Lock Washers and Hex Nuts to Crossbar.

A. Line up a set of holes on the Crossbar (EE) and holes on the ceiling canopy.
Thread Mounting Screws (DD) into the holes on the Crossbar (EE). Place Lock Washers and Thread Hex Nuts onto the Mounting Screws (DD).
Hand tighten until snug.



STEP 2 - Attach Crossbar to Outlet Box.

A. Pass the supply wires through the Crossbar (EE). Attach the Crossbar (EE) to the Outlet Box (CC) with the head of the Green Ground Screw facing you. Secure it with Outlet Box Screws (not included). Tighten until snug.

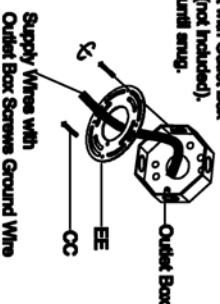


Figure 2

STEP 3 - Fit Ceiling Canopy to Crossbar Assembly

A. Fit the ceiling canopy to mounting screws (DD) and secure with Mounting Bails (AA). Note: The ceiling canopy should be snug against the ceiling and the mounting bails (AA). If not, adjust the length of the Mounting Screws (DD) by unscrewing the Hex Nut and Lock Washer and then screwing Mounting Screws (DD) in or out of the Crossbar (EE) until the correct length is achieved. Once the ceiling canopy is secure, remove the Mounting Bail (AA) and ceiling canopy and proceed to Step 4.

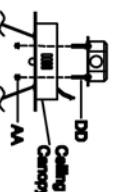


Figure 3

STEP 4 - Wire Connections

A. Use standard wire connectors (not included) to match all wire connections. Twist connectors and wires are tightly joined together. Wrap each connection with approved electrical tape and carefully stuff all the connected wires into the Outlet Box.

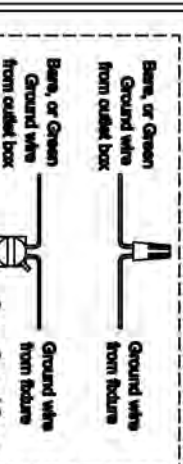


Figure 4

STEP 5 - Install Ceiling Canopy to Ceiling

A. Carefully tuck all wires into the outlet box and position the ceiling canopy of the Fixture Body (A) over the outlet box. Align the holes in the ceiling canopy with the Mounting Screws (DD). Secure with Mounting Bails (AA) and hand tighten until snug.

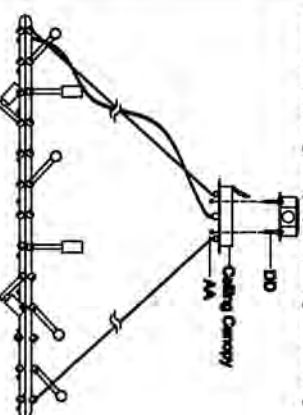


Figure 5

STEP 6 - Install Glass Rod and Bulbs.

A. Install bulbs onto sockets and push snug into place.
B. Assemble the Glass Rod Holder with the Fixture Body one by one.
C. Insert the Glass Rod into the Holder accordingly.

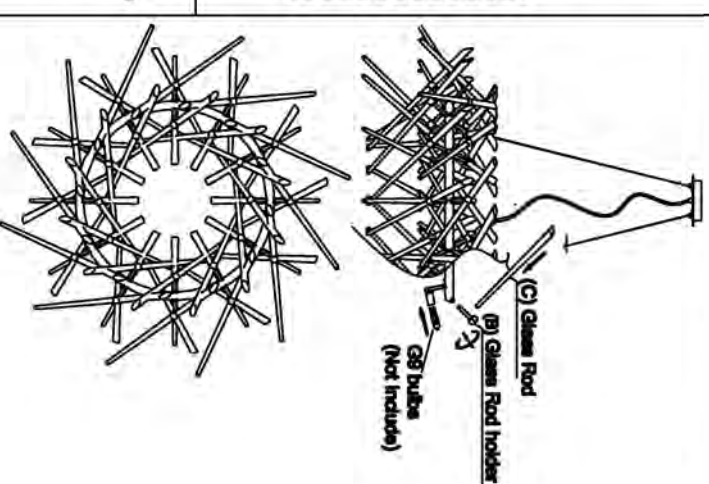


Figure 6