

Tools Required: Flat-head screwdriver, Phillips screwdriver, pliers, wire cutters, wire strippers, electrical tape, safety glasses.

Estimated Assembly Time: 20-30 minutes

Estimated Assembly Time: 20-30 minutes

Light Source: (25) CandelaStar Beam Bulbs 00W Incandescent.

Preparation: Identify and inspect all parts before beginning installation. Check package content list and diagrams below to be sure all parts are present. If any parts are missing or damaged, do not attempt to assemble, install, or operate the fixture. Contact customer service for replacement parts.

Turn off electricity at circuit breaker or main fuse box before installation. Consult a licensed electrician if in doubt. These instructions are provided for your safety. It is very important you read them completely before installing the fixture. We strongly recommend that a licensed, professional electrician perform the installation. Disconnect fixture from power source before replacing bulbs. Make sure bulbs are given sufficient time to cool before reuse.

A. (Refer to SUPPORT ARMS DISTRIBUTION) Pass supply wires from support arms through plate with coupling and plate with socket as shown. Secure them together by threading lock screws onto the plate. Hand tighten until snug with screwdrivers.

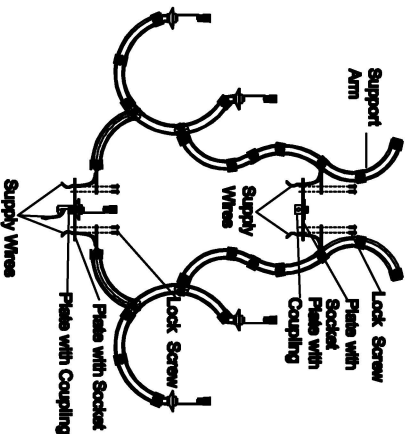


Figure 1

SUPPLY WIRES DISTRIBUTION

A. Pass supply wire and ground wire through the pass with coupling.

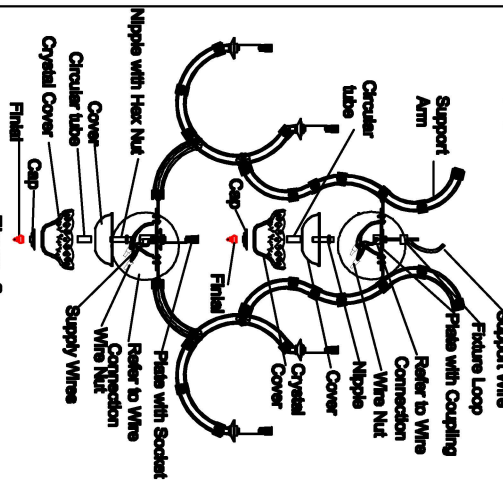


Figure 2

Smooth side of cable from Support Arms Identified with the label "T"

Smooth side of supply wire Identified with the label "T"

Ribbed side of cable from Support Arms Identified with the label "N"

Ribbed side of supply wire Identified with the label "N"

WIRE CONNECTIONS

ReleasedDate:2019-03-09

- and **Sealant**. Use supplied wax rods to make all wire connections (refer to **WIRE CONNECTIONS**, A and B). Tighten connections until wires are tightly joined together. Wipe each connection with approved electrical tape.
- B. Thread one end of the nipple into the coupling on the plate with coupling. Place wax cone, one crystal cover and one cap over the end of the nipple and secure with one flat, hard nylon unit nut.
- C. Thread the **hex nut** and the nipple with the **hex nut** into the **hex coupling** on the plate with socket. By using pliers, spread the **hex nut** against the **hex coupling** and hard nylon unit nut. Place another cone, crystal cover and cap over the end of the nipple with **hex nut**. Secure them with another flat and hard nylon unit nut.
- D. Thread the **sealant** loop onto the top center of the plate with coupling and hard nylon unit nut.

A. Place the crowbar to the ceiling and make (4) marks from the bottom of the crowbar on the ceiling for anchors. Remove the crowbar and drill proper holes from the (4) marks for anchors.

B. Insert anchors into the drilled holes properly. Place the crowbar, on the wall and using washers onto the anchors and secure with hex nuts. Hand tighten until snug with jaws.

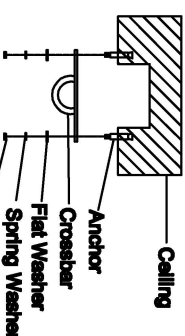


Figure 3

- A. Remove the lock from the quick connector. Place the quick connector onto the chain link at the bottom end of the chain system.
- B. Place the fiducial loop inside of the quick connector. Thread the lock back onto the quick connector and the fiducial loop. Hand tighten until snug to reconnect the chain system to the fiducial.

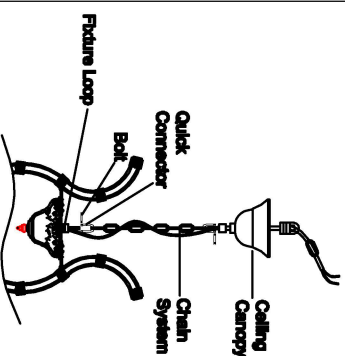


Figure 4

- A. Remove the bolt from the quick connector. Place the quick connector onto the hook of the crowbar.
- B. Insert the loop on the top end of the chain system inside of the quick connector. Thread the bolt back onto the quick connector and through the loop of the chain system. Hand tighten until snug to hang the fixture safely.

onto the ceiling. Using screwdriver, thread set screw on the ceiling canopy until snug to secure the ceiling canopy.

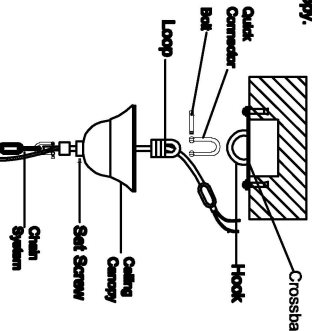


Figure 5

A. Use standard wire connectors (not included) to make all wire connections. Twist connectors until wires are tightly joined together. Wrap each connection with approved electrical tape and carefully stuff all the connected wires into outlet box.

Note: If the electrical wire is going to be cut shorter than provided you will need to identify the "L" bus wire and then "N" neutral wire before you cut the excess wire off. One is labeled N and the other labeled L. To do this separate the "L" line wire and the "N" neutral wire as far as you need to. Re-label the wire near where you want to make the cut. Be sure to mark the wire on the side of the fixture and not on the excess wire being cut and removed.

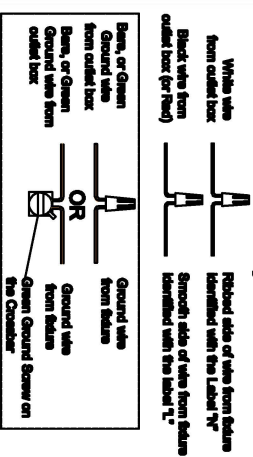


Figure 6