



# THINLINE

LIT CORNER 2.25

Date	Fixture
Qty	Client

# THINLINE

## LIT CORNER HUB 2.25

### Features

90° | 120° Integrated Corner Hub

2.25" wide

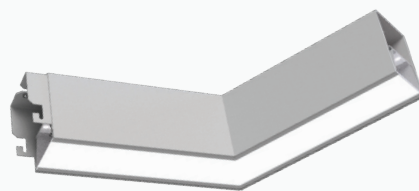
Seamless Distribution of Light

Aluminum Housing

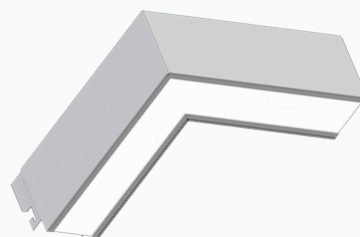
Frosted Lens

Grey / White / Black /

Custom Finishes Available

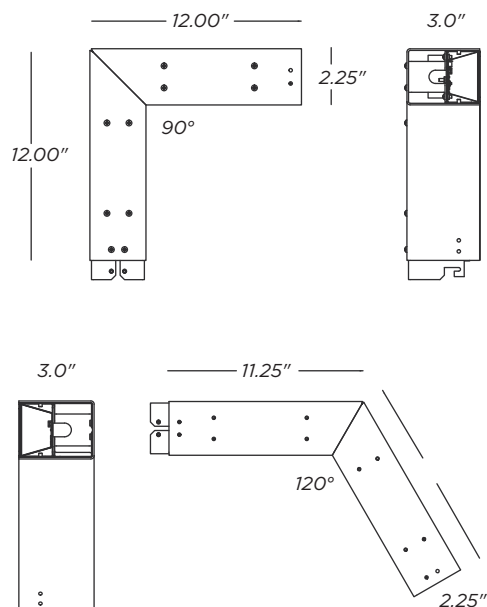


**LIT CORNER 120°**

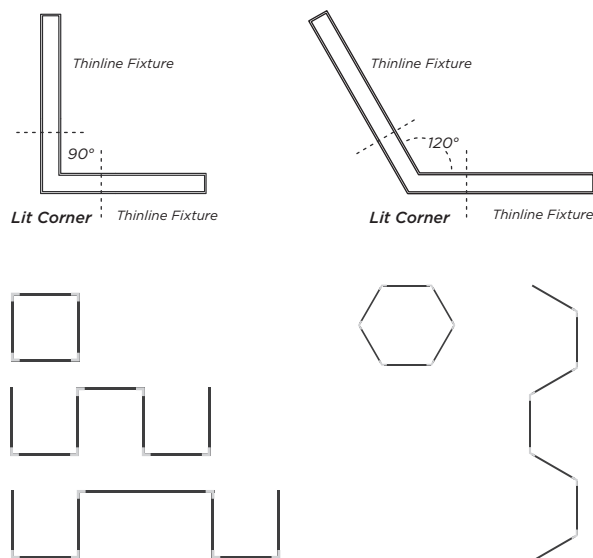


**LIT CORNER 90°**

### Dimensions



### Sample Configurations



Specifications subject to change without notice.

**delviro energy**

94 Brockport Drive, Toronto, Ontario, M9W 7J8



**10 Year**  
Warranty

1

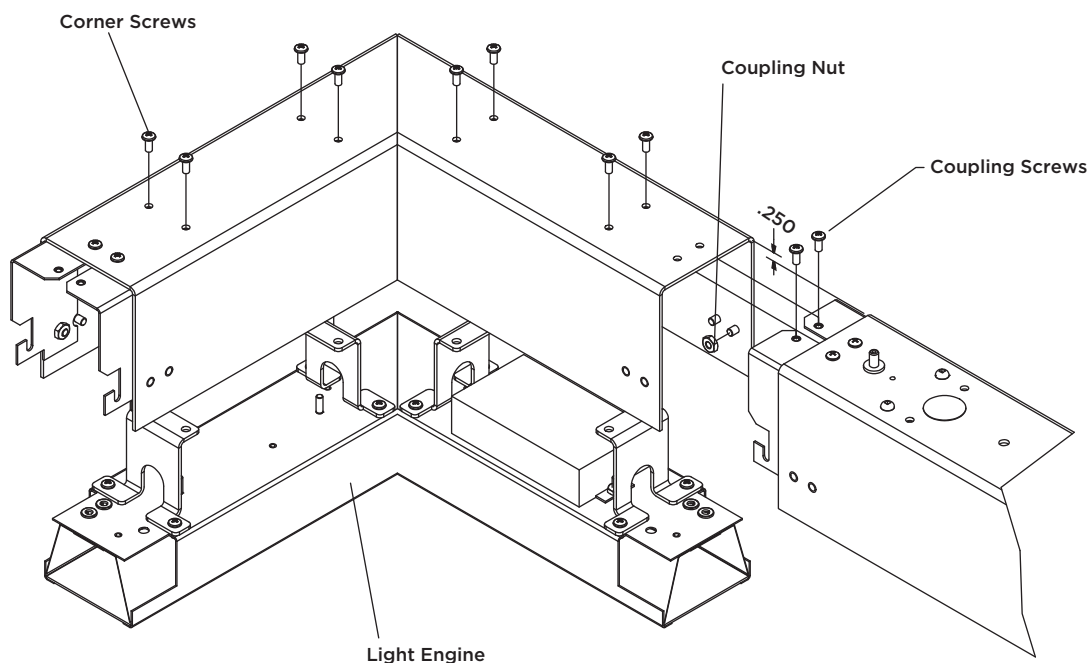
info@delviro.com

1.877.502.3434

delviro.com

### Continuous Run Instructions

1. Start by connecting all electrical wires/connectors accordingly.
2. Run the side of the coupling brackets on the next unit's edge above the flange; the unit are offset about 1/4".
3. When the two enclosures come together move the unit with the coupling brackets up to hook the cut-out in the bracket on the stud on the other unit.
4. When the units are "HOOKED" put in screws to tighten the units together.
5. Make sure that the units are balanced and lined up properly from the hanging wires. Any misalignment will create an improper assembly.
6. If there are gaps or misalignment where the coupling bracket goes into the corner, remove the screws that hold the light engine of the corner and drop down making sure that no electrical connections or parts are damages.
7. Add a #10 - 32 UNC nut on the stud where the bracket hooks (both sides).
8. Fit back the light engine making sure no wires are pinched and all the parts are in place.
9. Tighten the screws from the top of the unit.



**Ordering Guide**

MODEL	CONTINUOUS RUN LENGTH	QUANTITY	WATTS/ft	COLOR TEMP	VOLTAGE	LENS
<b>DTL CORNER</b>	<b>___ RUN LENGTH</b>	<b>___ QTY</b>	<b>2.5</b>	<b>3K</b> 3000K	<b>U</b> 120/277V	<b>FR</b> Frosted
			<b>3.5</b>	<b>35K</b> 3500K	<b>H</b> 347V	
			<b>5</b>	<b>4K</b> 4000K		
			<b>7.5</b>	<b>5K</b> 5000K		
			<b>10</b>			
<b>DTL CORNER</b>						<b>FR</b>

FINISH	ANGLE	WIDTH	
<b>GRY</b> Grey	<b>90°</b> <b>120°</b>	<b>2.25</b>	
<b>WH</b> White			
<b>BLK</b> Black			
<b>CU</b> Custom			
		<b>2.25</b>	

**CU** - Please consult factory