



Thinline

Ellipse

Product Features

- Elliptical shape
- Contemporary design
- One piece aluminum body
- 4 and 8 foot length options
- Direct distribution
- Direct - Indirect distribution option
- Continuous row options
- Designed and manufactured in North America

**10 Year
Warranty**

Specifications

Efficacy:

140 Lm/W

CRI:

80+ | 93 Available

Color Temperature:

3000K, 3500, 4000K, 5000K

Lumen Maintenance:

200,000+ Life Hours (L70)

Voltage:

120/277V | 347V

Watts/ft:

5W, 10W, 15W, 20W

Control Options:

0-10V Dimming, DMX, DALI, Wireless

Operating Temperature:

-20°C to +40°C

Mounting:

Aircraft Cable, Stem

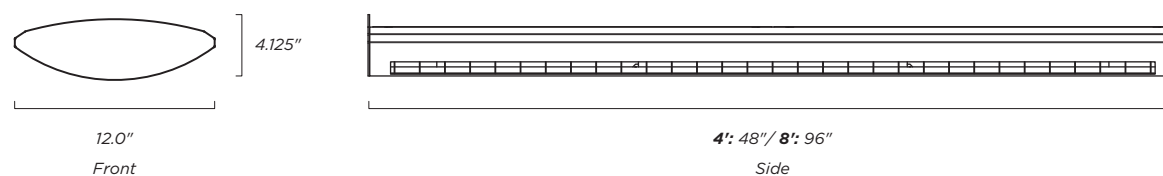
Wiring Options:

Black, White, and Grey Flexible Cord, 5 Conductor Wire

Accessories:

Emergency Backup
0-10 1% Dim to off Driver

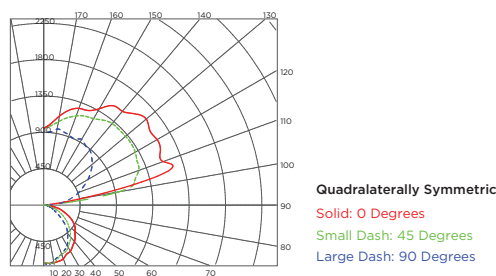
Dimensions



Zonal Lumen Summary

Zone	Lumens	% Lamp	% Luminaire
0 - 30	562.8	6.7	6.7
0 - 40	916.4	10.9	10.9
0 - 60	1582.5	18.8	18.8
60 - 90	425.9	5.1	5.1
0 - 90	2008.4	23.9	23.9
90 - 180	6393.0	76.1	76.1
0 - 180	8401.4	100.0	100.0

Distribution



delviro energy

94 Brockport Drive, Toronto, Ontario, M9W 7J8 | Tel. 1.877.502.3434 | info@delviro.com | www.delviro.com

© delviro energy 2018

Specifications subject to change without notice.

Output Performance

Table

Watts/ft - Delivered Lumens/ft	
5	700
10	1400
15	2100
20	2800

Custom Output Packages

Step 1: Select Model:
4', 8'

Step 2: Select:
Watts/ft - Delivered lumens/ft

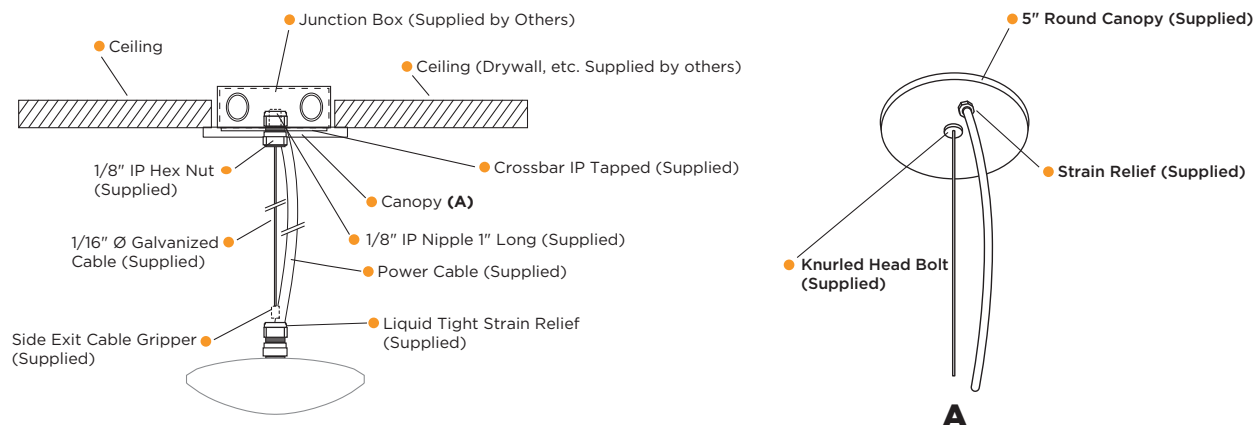
* Watts per foot available on all lengths

Example:

Model	Watts/ft	-	Delivered Lumens/ft	Yields	Watts	-	Delivered Lumens
DTL 4'	5		700		20		2800
	10		1400		40		4800
	15		2100		60		8400
	20		2800		80		11200
Model	Watts/ft	-	Delivered Lumens/ft	Yields	Watts	-	Delivered Lumens
DTL 8'	5		700		40		5600
	10		1400		80		11200
	15		2100		120		16800
	20		2800		160		22400

Mounting Options

Aircraft Cable



delviro energy

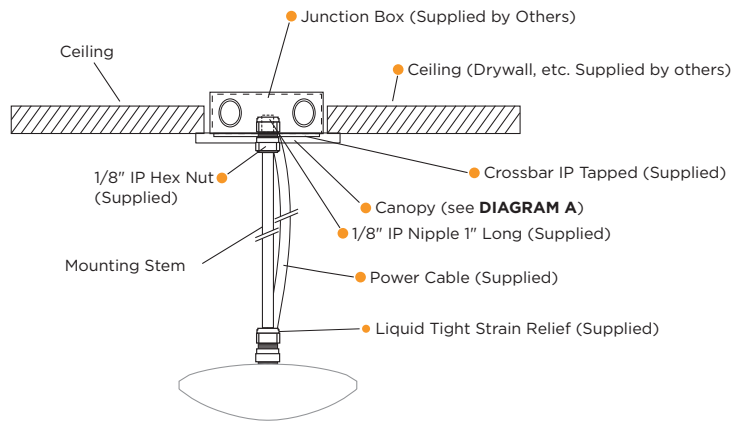
94 Brockport Drive, Toronto, Ontario, M9W 7J8 | Tel. 1.877.502.3434 | info@delviro.com | www.delviro.com

© delviro energy 2018

Specifications subject to change without notice.

Mounting Options - cont.

Pendant Mount - Stem



■ Mounting Stem 1/2" IPS (7/8" O.D.):

Lengths:

3' threaded at both ends

4' threaded at both ends

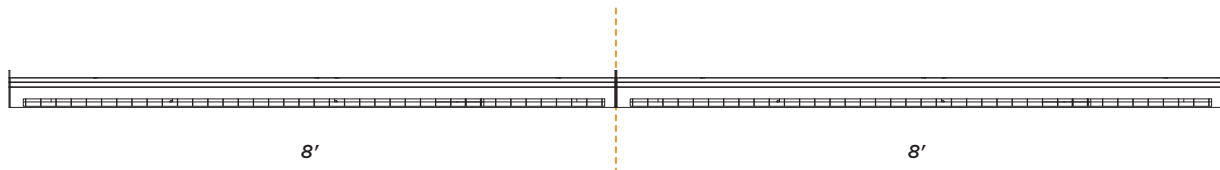
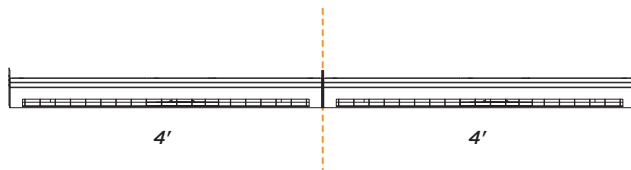
6' threaded at both ends

8' threaded at both ends

Continuous Run

Uses 4' or 8' segments

Please specify total run length



delviro energy

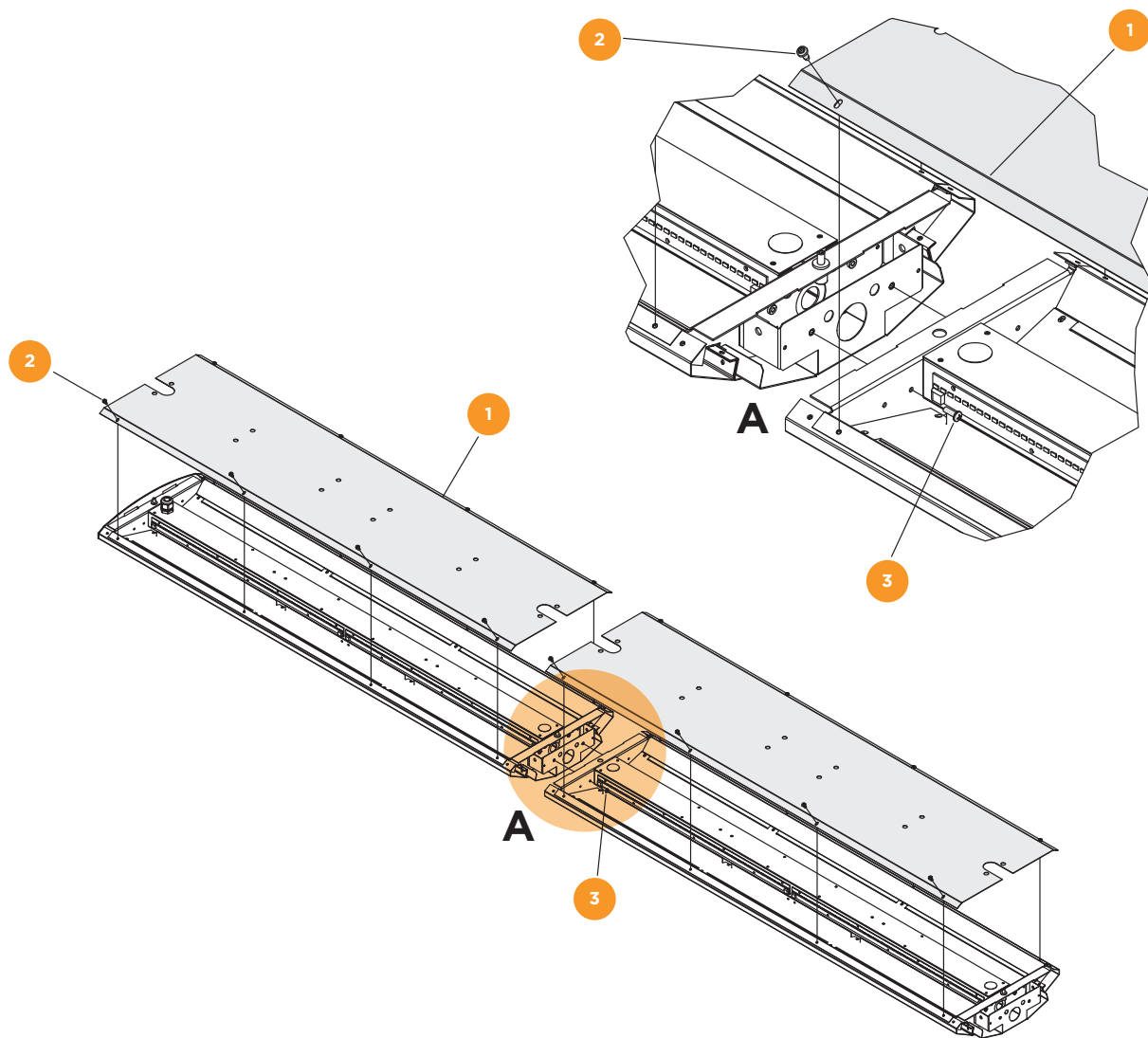
94 Brockport Drive, Toronto, Ontario, M9W 7J8 | Tel. 1.877.502.3434 | info@delviro.com | www.delviro.com

© delviro energy 2018

Specifications subject to change without notice.

Continuous Run - Installation

1. Remove the top covers (Item 1) of the fixtures by removing the #8 self tapping screw (item 2, QTY 8) and put aside.
2. Remove the #8-32 UNC Screw (item 3, QTY 2) from the coupler.
3. Connect the power and dimming wires between the two fixtures and fit the wires inside the coupler.
4. Then bring the two fixtures together by inserting the coupler in the next unit.
5. Add the #8-32 screw (item 3) from the inside of the second unit and tighten in place - see detail.
6. Reassemble the covers using the screws that were removed in Step 1



delviro energy

94 Brockport Drive, Toronto, Ontario, M9W 7J8 | Tel. 1.877.502.3434 | info@delviro.com | www.delviro.com

© delviro energy 2018

Specifications subject to change without notice.

Ordering Guide

MODEL	WATTS/ft	COLOR TEMP	VOLTAGE	FINISH	MOUNTING	WIRING
DTL - ELLIPSE 4	5	3K 3000K	U 120/277V	WH White	AC Aircraft Cable	BFC Black Flexible Cord
DTL - ELLIPSE 8	10	35K 3500K	H 347V	*CU Custom	*ST Stem	WFC White Flexible Cord
DTL - ELLIPSE CR	15	4K 4000K				5 WIRE 5 Conductor Wire __
	20	5K 5000K				

--	--	--	--	--	--	--

ACCESSORIES	DISTRIBUTION	* CUSTOM LENGTHS (DTLCR)	
N None	DIRECT	Specify Length	
EM Emergency Backup	DIRECT - INDIRECT	4' and 8' segments	
DIMOFF 0-10 1% Dim to off Driver			

--	--	--	--

NOTE

CU - Please consult factory
ST - Specify Length: - 3', 4', 6', 8'
CUSTOM LENGTHS (DTLCR) - Continuous run - 4' / 8' segments

delviro energy

94 Brockport Drive, Toronto, Ontario, M9W 7J8 | Tel. 1.877.502.3434 | info@delviro.com | www.delviro.com

© delviro energy 2018

Specifications subject to change without notice.