

SPECIFICATION SHEET

SUBJECT

LED CEILING LIGHT

CUSTOMER PROJECT

Project: _____
Type: _____
Cat. No.: _____
Qty: _____
Date: _____
EEL Rep: _____



solutions closer to nature

Telephone: 905 415 8878 Fax Number: 905 415 8872 Toll Free Telephone: 855 415 8878 Toll Free Fax: 855 415 8872

DESCRIPTION

The EEL LED Flush Mount Ceiling Light Fixtures features a painted white finish and a white acrylic diffuser. It is perfect for commercial and residential applications. Ideal for hallways, kitchens and bedrooms.



**LED
CEILING LIGHTS**
12 inch

SPECIFICATION FEATURES

Construction

Die formed 22 gauge galvanized steel painted high gloss white finish

Electrical

Long Life LED System complete with electrical driver to deliver the optimal performance

LED's available in a 3000K with a typical CRI: 80

Ambient temperature -40°C to 40°C

LED modules rated for 94,000 hours

Electronic drivers are available in 120 or 120/277 Volt applications

Driver and Module Access

Drivers can be accessed by removing the lens from the housing

Mounting

Surface Mount

Finish

22 gauge galvanized steel and high gloss enamel paint finish ensures maximum bonding and rust inhibition

Shielding

White acrylic lens offers visual comfort

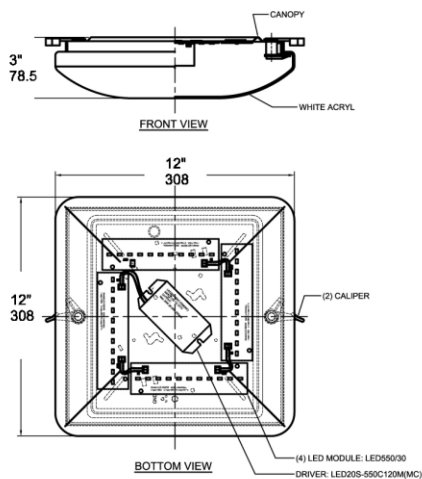
Compliance

Modules and Drivers are UL recognized components and indoor luminaires are cULus listed

Warranty

5 years

CL-T6512-6-LED04



CL-T6512-6-LED04



Dimensions

mm | 308(W) x 308(L) x 79(H)

inch | 12(W) x 12(L) x 3(H)



ORDERING CODE, ENERGY AND PERFORMANCE DATA

	Model No.	Delivered Lumens (lm)	Input Watts (W)	Voltage (V)	Colour Temp. (K)	Efficacy (lm/W)	Certification
	CL-T6512-6-LED04 12 inch — End Of Life —	1886	23	120 / 120M	3000K	82	

NOTE:
Lumens are Estimated

SHIPPING DATA

Model No.
CL-T6512-6-LED04

Weight
2kg / 4.4lbs

