



## BATTEN : LED LINEAR FIXTURES

### DESCRIPTION

Batten Series of LED Linear luminaires is designed to provide a cost effective alternative to standard fluorescent fixtures in low/mid mounting applications such as store fronts, hallways, canopy areas and covered walk-ways. With an IP65 rating these architectural linear fixtures can be surface mounted in both interior and exterior applications. Installation is made easy with the use of "snap-on" brackets and water-proof end-to-end connectors. These fixtures provide a minimum of 60% energy savings over the existing fixtures and can be ordered in both medium and high efficacy versions.

### FEATURES

- IP65 Rating for outdoor locations
- Durable Aluminum/PC construction
- Snap-in mounting brackets for ease of installation
- Quick connect end caps for linear runs up to 300W
- End-to-end connectability
- Greater than 60% energy savings over existing fixtures
- Available in lengths of 2ft / 4ft / 8ft

### LISTINGS

- UL Listed for wet locations
- IP65 Rated
- ROHS Compliant

### SPECIFICATIONS

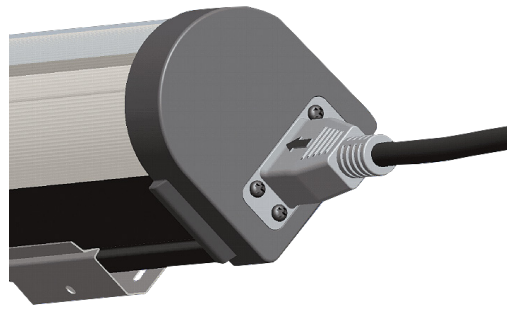
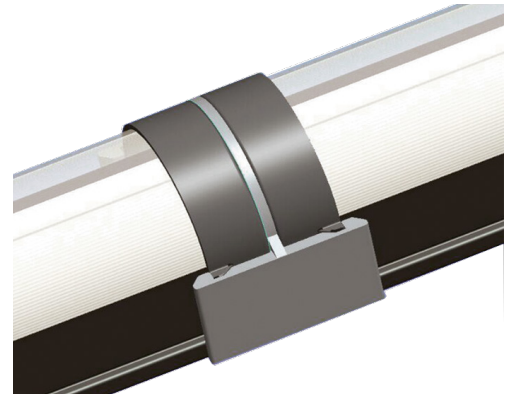
- Power Factor >0.95
- Voltage 100 - 277 VAC
- CRI >80
- Material Powder Coated Aluminum and PC
- Work Temp. - 40° F to + 130° F
- Storage Temp. - 40° F to + 185° F
- Operation Life L70 >54,000 Hours

### WARRANTY

- 5 year limited warranty

\*Maximum power limit is 300 watts per run. Additional power source will be required and a new run initiated after the 300 watt limit is achieved.

project name	type
catalog number	
comments	voltage
approved by	date



### APPLICATIONS

- Store front lighting
- Halls
- Canopy lighting
- Cove lighting
- Parking garages
- Outdoor security lighting
- Lighting for wet/damp locations



## ORDERING INFORMATION:

EXAMPLE: XBAT02-S40K-BUNW

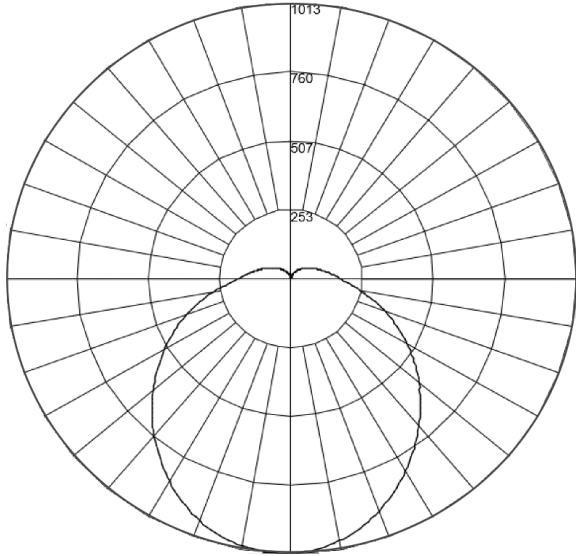
Product Code	Length	Power	CCT	CRI	Voltage	Dimmable	Lens
<b>XBAT</b> - Batten Linear	<b>02</b> - 2' <b>04</b> - 4' <b>08</b> - 8'	<b>S</b> - Standard	<b>40K</b> - 4000K <b>50K</b> - 5000K	<b>B</b> - >80	<b>U</b> - 100 - 277VAC	<b>N</b> - No	<b>W</b> - White

## PERFORMANCE SUMMARY

Length	Part Number	Max Power	Color Temp	Watts	Typical Lumens (4000K)
2'	XBAT02-S40K-BUNW	Standard	4000K	12W	1,726 lm
	XBAT02-S50K-BUNW	Standard	5000K		
4'	XBAT04-S40K-BUNW	Standard	4000K	22W	3,080 lm
	XBAT04-S50K-BUNW	Standard	5000K		
8'	XBAT08-S40K-BUNW	Standard	4000K	38W	5,361 lm
	XBAT08-S50K-BUNW	Standard	5000K		

## PHOTOMETRICS

XBAT04-S50K-BUNW



Maximum Candela = 1013.4 Located at Horizontal Angle = 150, Vertical Angle = 4  
Vertical Plane through Horizontal Angles (0 - 180)

## FIXTURE DIMENSIONS

Fixture	Length	Width	Height	Weight
2'	23-1/2"	2-5/8"	3"	1.37 lbs
4'	47-1/4"			2.31 lbs
8'	94-1/2"			4.85 lbs

## ACCESSORIES

1' Jumper Cable	This 1' jumper cable is used to connect one fixture to the next. It comes with watertight connectors on both ends.	WH-CAB-MN-037
3' Jumper Cable	This 3' jumper cable is used to connect one fixture to the next. It comes with watertight connectors on both ends.	WH-CAB-MN-038
6' Jumper Cable	This 6' jumper cable is used to connect one fixture to the next. It comes with watertight connectors on both ends.	WH-CAB-MN-039
3' Power Cable (One Power Cable, 3' or 12', needs to be ordered for each "run")	3' Cable for incoming power. Plugs into the first fixture in the string. Other end goes to on-site junction box.	WH-CAB-MN-046
12' Power Cable (One Power Cable, 3' or 12', needs to be ordered for each "run")	12' Cable for incoming power. Plugs into the first fixture in the string. Other end goes to on-site junction box.	WH-CAB-MN-036
Snap-On Mounting Bracket (Two come standard with each 4' fixture, four with 8' fixtures)	2 of these brackets are used to surface mount each fixture (hardware not included), except for the 8' fixture that gets 4 brackets that are secured to the surface then the fixture snaps into the brackets.	MC-005-31-108
Suspension Mounting Cable Kit	Each kit has two cables for mounting the 2' or 4' fixtures. Two kits are needed for each 8' fixture. Allows fixtures to be suspended up to 4' from the mounting point.	MC-005-31-258
Joining Bracket (One Joining Bracket or one Jumper Cable is needed between each fixture in a run. If you have 8 fixtures in a run, you'll need 7 Brackets or Cables)	Allows the end of one Batten fixture to be snapped into the next, end-to-end, resulting in a water-tight seal	PP-006-WB-052
Watertight Plug (Each fixture comes with one Watertight Plug installed for safety. It can be discarded if not needed)	A water tight seal for the power connection point, used at the end of a run.	PP-006-XB-053

Contact your local Eiko rep for assistance with accessories