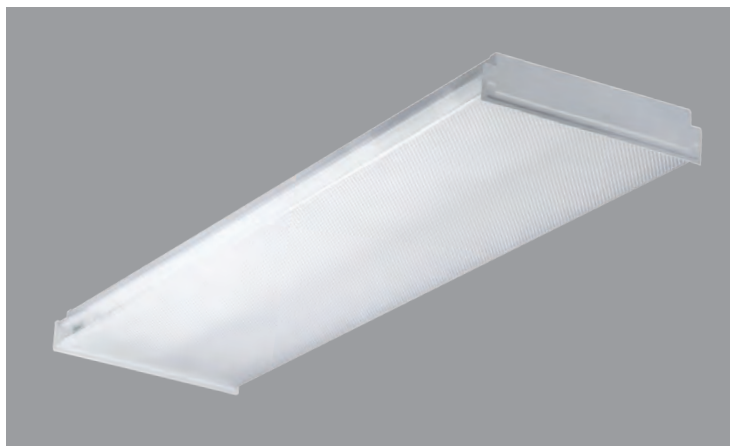
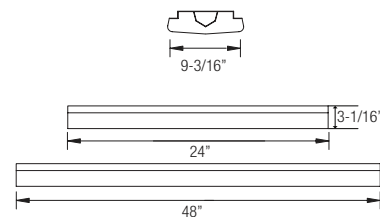




OIW-LED SERIES



CALCULATED
L70
LIFETIME
50,000 HRS



5000
 LUMENS

37
 WATT

According to
 DLC Test Results

7000
 LUMENS

52
 WATT

According to
 DLC Test Results

8000
 LUMENS

64
 WATT

According to
 DLC Test Results

10000
 LUMENS

82
 WATT

According to
 DLC Test Results

12000
 LUMENS

98
 WATT

According to
 DLC Test Results

14000
 LUMENS

116
 WATT

According to
 DLC Test Results

APPLICATION:

Ideal for general office lighting, corridors, educational institutions, hospitals, and retail.



(On selected configuration, consult factory)



* For list of qualified DLC fixture, please consult factory

PRODUCT FEATURES:

- Life tested to ensure light output up to 50,000 hours of operation to L70
- Tested to LM-79 and LM-80 standards
- Heavy-duty-gauge steel utilized throughout for durability and code compliance
- Wrap around acrylic lens provides even illumination up to 180 degrees
- Pretreated with five-stage iron phosphate process to ensure superior paint adhesion
- Painted high-gloss baked white enamel

- Shallow design is ideal for commercial, industrial and residential spaces requiring general illumination
- Suitable for dry and damp environments
- Lightweight design enables easier installation
- Not intended for continuous row mounting

OPTICS - The OIW-LED uses a prismatic acrylic lens to scatter the light emitted from the LED chips into functional light. The LED offered in the OIW-LED has the highest return on initial investment compared to other standard lighting solutions.

PERFORMANCE - The light engines found in the OIW are rated at 80+ CRI and are available in multiple CCTs: 3000K, 3500K, 4000K and 5000K. Rated and tested to LM-79 and LM-80 standards. The LEDs are also binned to a 3-step MacAdam ellipses to achieve consistent color from fixture to fixture.

ELECTRICAL - Powered by high-quality constant-current power LED drivers which are rated for 50 to 60Hz at 120-277V input, produce less than 20% THD, and have a power factor of .90 to 1.00.

DIMMING - The OIW-LED comes standard with 0-10V dimming on either 120 or 277V. Also available in Lutron dimming options. Consult factory for dimmer compatibility.

OPTIONS - Fixtures can be shipped pre-installed with daylight harvesting controls, occupancy sensors, and/or power pack. Available manufacturer options include Leviton, Hubbell Automation, and others.

QUALITY CONTROL - Every fixture is turned on and rigorously tested by our QC Department before shipping.

WARRANTY - Limited 5 Year Warranty

LISTING - c-UL-us - Listed for Feed Through Wiring.

Ordering Information: Example: 8-OIW-LED-8000L-DIM10-120-30K

FIXTURE SIZE	SERIES	TYPE	SERIES	DIMMING	VOLTAGE	CCT	CRI	EMERGENCY	OTHER OPTIONS
8 - 8'	OIW-Oracle LED Industrial Wrap Around	LED	5000L - (4500 lumens) 7000L - (6893 lumens) 8000L - (8398 lumens) 10000L - (10371 lumens) 12000L - (12181 lumens) 14000L - (14513 lumens)	DIM10 - DIM10-MVOLT LUTH - LUTH-MVOLT	MVOLT 347* * Consult factory for details	30K - (3000K) 35K - (3500K) 40K - (4000K) 50K - (5000K)	85	0-EMG-LED	OSM3D-DDW-20 - HF Microwave Sensor 1-10 20% Dim OSM3D-DDW-50 - HF Microwave Sensor 1-10 50% Dim OSM3D-V1W - Line Voltage Microwave Sensor USA - Made in America Compliance FSP-311-B-D - 0-10V continuous dimming PIR photo/ motion sensor with bluetooth control option.
WIRING OPTIONS FBF - Internal Fast Blow Fuse SBF - Internal Slow Blow Fuse RIS - Radio Interference Sensor									