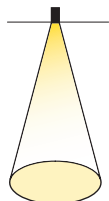
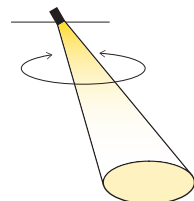




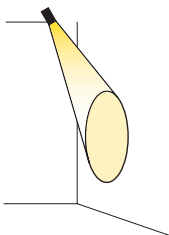
Downlight



360° Rotation



35° Tilt



#### VERTICAL ADJUSTMENT

Slide upper module up and down to achieve exact desired beam angle from narrow to wide distribution. Alternatively, an Allen wrench is provided with the fixture, which decreases the height of the upper module for a wider distribution. Twisting the captive screws counterclockwise increases the height of the upper module for a narrower distribution.

#### TOOL-LESS HOT AIMING

Achieve full 35-degree tilt and 360-degree rotation and can be securely locked into place on reaching desired position.

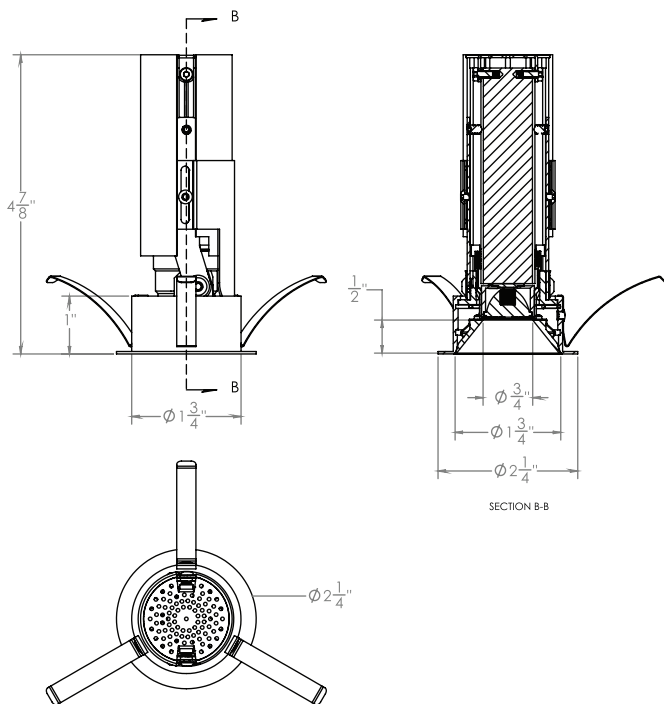
#### SHIELDING

Once tilt, rotation, and beam angle are adjusted and locked in place, shielding of the LEDs can be adjusted to prevent light loss and enhance directional aiming.

#### TRIMS

Round, square and wall wash trims available.

LUMENS	800, 1000
CCT	27K, 30K, 35K, 40K, 50K
CRI	90
COLOR QUALITY	2 Step MacAdam Ellipse
OPTIC	MD (Medium) *Consult factory for narrow or wide distribution
FINISH	Chrome, White
DIMMING	DIM10 (0-10V dimming), DIMTR ( Triac & Electronic low voltage dimming. Available in 120V only)
SHAPE	Round (Flanged, Trim-less) Square (Flanged, Trim-less)
PHOTOMETRIC TESTS	In Accordance with IES LM79 and LM80



NOMINAL LUMENS	DELIVERED LUMENS	WATTAGE
800	766	10W
1000	1008	14W

Based on 3000K, 90+ CRI. Actual wattage may vary +/- 5%



**TRIM OPTIONS ( Select only one )**



**A1R-F-1102-LED** -  
1" Round Flanged LED  
Adjustable and Fixed  
Downlight



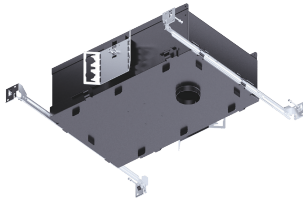
**A1R-TL-1102-LED** -  
1" Round Trimless LED  
Adjustable and Fixed  
Downlight

Example: **A1R-F-1102-LED-800L-MD-30K-90-CL-WH**

SERIES	PERFORMANCE	DISTRIBUTION	CCT	CRI	FINISH
<b>A1R-F-1102-LED</b> <b>A1R-TL-1102-LED</b>	<b>800L</b> - 800 lumens <b>1000L</b> - 1000 lumens	<b>MD</b> - Medium <small>*Consult factory for narrow or wide distribution</small>	<b>27K</b> - 2700K <b>30K</b> - 3000K <b>35K</b> - 3500K <b>40K</b> - 4000K <b>50K</b> - 5000K	<b>90</b> - 90 CRI	<b>CL-WH</b> - Chrome - White <b>W-WH</b> - White - White
<b>800L</b> - only 10W new construction and remodel housing <b>1000L</b> - only 15W new construction and remodel housing					

**HOUSING OPTIONS ( Select only one )**

IC NEW CONSTRUCTION



Example: **A1R-LED-IC-10W-DIM10-MVOLT-BP30**

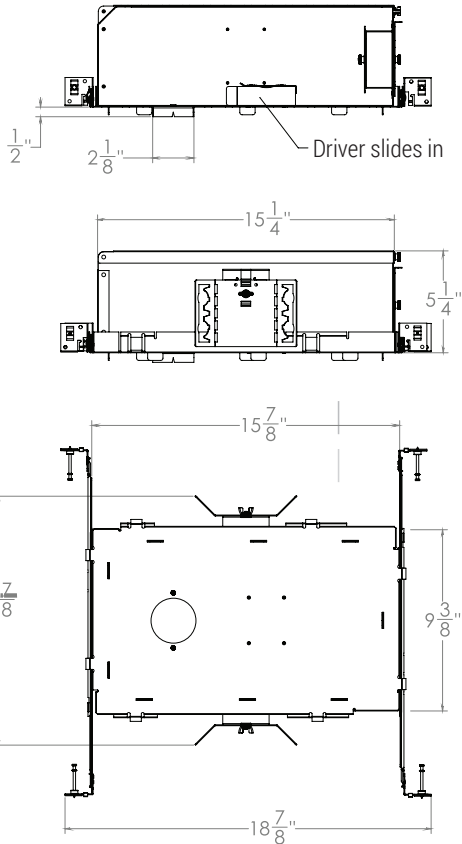
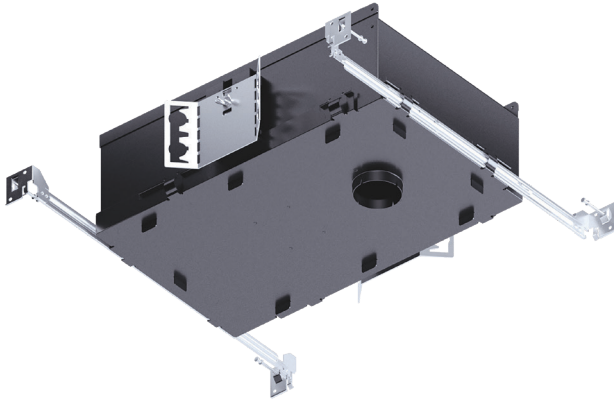
POWER PACK	DIMMING	VOLTAGE	DRIVER
<b>A1R-LED-IC-10W</b> - For 800L Lumens <b>A1R-LED-IC-15W</b> - For 1000 Lumens	<b>DIM10</b> <b>DIMTR</b> - Triac (120V only)	<b>120</b> <b>277</b> <b>MVOLT</b> <small>DIMTR - only 120V</small>	<b>BP30</b>

NON-IC REMODEL/ NEW CONSTRUCTION



Example: **A1R-LED-R-10W-DIM10-MVOLT-BP30**

POWER PACK	DIMMING	VOLTAGE	DRIVER
<b>A1R-LED-R-10W</b> - For 800 Lumens <b>A1R-LED-R-15W</b> - For 1000 Lumens	<b>DIM10</b> - 0-10V <b>DIMTR</b> - Triac (120V only)	<b>120</b> <b>277</b> <b>MVOLT</b> <small>DIMTR - only 120V</small>	<b>BP30</b>



NOMINAL LUMENS	DELIVERED LUMENS	WATTAGE
800	766	10W
1000	1008	14W

Based on 3000K, 90+ CRI. Actual wattage may vary +/- 5%

#### IC HOUSING

Thermally protected, specification grade adjustable recessed housing. For new construction insulated ceilings where housing will be in direct contact with insulation. Die-formed all aluminum construction matte black painted for maximum heat dissipation, rust protection and glare free illumination.

#### ELECTRICAL/TRANSFORMER

Junction box and driver can be accessed from below the ceiling and above the ceiling. Junction box is listed for through branch circuit wiring, 12 AWG 90° C supply conductors, and has four 1/2" KOs, one 3/4" KO and four Romex knockouts with true pry-out slots and strain clamps.

#### DIMMING & DRIVER INFORMATION

DIM10 - 0-10V dimming on either MVOLT 120V or 277V. Dimmable down to 5% of initial lumens, standard.

DIMTR - Triac & Electronic low voltage dimming. Available in 120V only.

#### ACCESSIBLE DRIVER

Driver is connected to wire, which is attached to body of luminaire. Driver is housed within the housing, and can be accessed from below the ceiling by a simple pull-down mechanism.

#### MOUNTING

Pre-installed bar hangers allow housing to be positioned and locked at any point within a 24" joist span. They can be positioned on either the long or short axis of the housing and can be shortened for 12" joists. A double-headed real nail attaches housing securely into the joist. Bar hanger nails are installed on a 20° downward angle for better contact, and the 90° pivoting mounting plate makes installation fast and accurate. Bar hangers can fit onto T-Bar spline with additional slots and holes for special mounting methods if necessary. 18-gauge steel butterfly brackets can be adjusted vertically. Butterfly brackets may be installed with 3/4" or 1-1/2" lathing channel, 1/2" EMT, or optional C-Channel mounting bars are available.

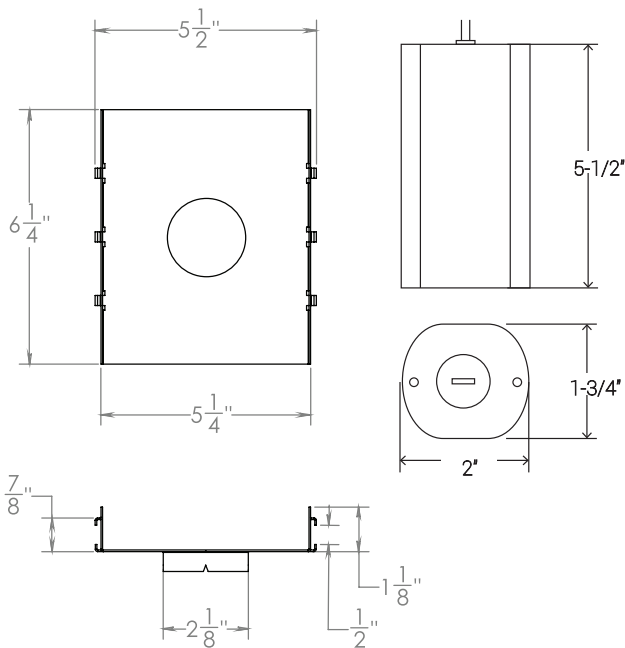
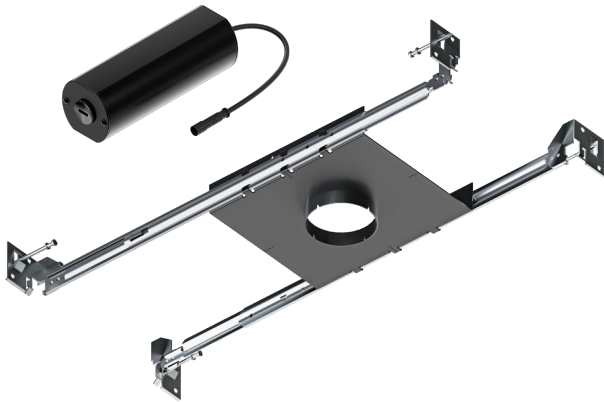
#### LABELS

c-UL-us listed for damp location  
c-UL-us listed for feed through wiring  
c-UL-us listed for direct contact with insulation

#### WARRANTY

5-year limited warranty for parts and components (labor not included).

LUMENS	800 - <b>A1R-LED-IC-10W</b> 1000 - <b>A1R-LED-IC-15W</b>
DIMMING	DIM10 (0-10V dimming), DIMTR (Triac-120V only)
VOLTAGE	120V, 277V, MVOLT



NOMINAL LUMENS	DELIVERED LUMENS	WATTAGE
800	766	10W
1000	1008	14W

Based on 3000K, 90+ CRI. Actual wattage may vary +/- 5%

#### IC HOUSING

Thermally protected, specification grade adjustable recessed housing. For new construction insulated ceilings where housing will be in direct contact with insulation. Die-formed all aluminum construction matte black painted for maximum heat dissipation, rust protection and glare free illumination.

#### ELECTRICAL/TRANSFORMER

Junction box and driver can be accessed from below the ceiling and above the ceiling. Junction box is listed for through branch circuit wiring, 12 AWG 90° C supply conductors, and has four 1/2" KOs, one 3/4" KO and four Romex knockouts with true pry-out slots and strain clamps.

#### DIMMING & DRIVER INFORMATION

DIM10 - 0-10V dimming on either MVOLT 120V or 277V. Dimmable down to 5% of initial lumens, standard.

DIMTR - Triac & Electronic low voltage dimming. Available in 120V only.

#### ACCESSIBLE DRIVER

Driver is connected to wire, which is attached to body of luminaire. Driver is housed within the housing, and can be accessed from below the ceiling by a simple pull-down mechanism

#### MOUNTING

Pre-installed bar hangers allow housing to be positioned and locked at any point within a 24" joist span. They can be positioned on either the long or short axis of the housing and can be shortened for 12" joists. A double-headed real nail attaches housing securely into the joist. Bar hanger nails are installed on a 20° downward angle for better contact, and the 90° pivoting mounting plate makes installation fast and accurate. Bar hangers can fit onto T-Bar spline with additional slots and holes for special mounting methods if necessary. 18-gauge steel butterfly brackets can be adjusted vertically. Butterfly brackets may be installed with 3/4" or 1-1/2" lathing channel, 1/2" EMT, or optional C-Channel mounting bars are available.

#### LABELS

c-UL-us listed for damp location

c-UL-us listed for feed through wiring

c-UL-us listed for direct contact with insulation

#### WARRANTY

5-year limited warranty for parts and components (labor not included).

LUMENS	800 - <b>A1R-LED-R-10W</b> 1000 - <b>A1R-LED-R-15W</b>
DIMMING	DIM10 (0-10V dimming), DIMTR ( Triac-120V only)
VOLTAGE	120V, 277V, MVOLT



**A1R-F-1102-LED-800L-DIM10-120-MD-30K-90-CL**

**TEST NO.: EL05082054**

INPUT WATTS: **10.5**

LUMENS: **766**

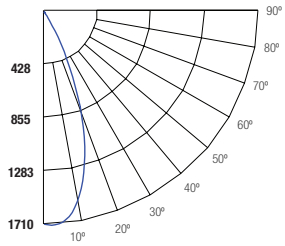
CRI: **90**

EFFICACY: **73**

CCT: **3000K**

SPACING CRITERIA: **0.64**

**Candle Power Distribution (Candelas)**



**Zonal Lumens Summary**

Zone	Lumens	%Lamp	%Fixt
0-20	500.25	65.3	65.3
0-30	729.95	95.3	95.3
0-40	760	99.2	99.2
0-60	764.87	99.8	99.8
0-80	765.34	99.9	99.9
0-90	765.36	99.9	99.9

**Luminance (Average candela/M<sup>2</sup>)**

Angle in Degrees	Average 0°	Average 45°	Average 90°
45	1535	1409	1520
55	698	767	901
65	373	381	113
75	26	26	26
85	79	59	79

**Lumens Per Zone**

Zone	Lumens
0-10	154.5
10-20	345.74
20-30	229.71
30-40	30.05
40-50	3.28
50-60	1.59
60-70	0.41
70-80	0.05
80-90	0.02

**Candela Tabulation**

Q	
0	1699.85
5	1672.29
15	1301.83
25	505.4
35	25.43
45	3.17
55	1.17
65	0.46
75	0.02
85	0.02
90	0.02

**Coefficients of Utilization - Zonal Cavity Method**

Effective Floor Cavity Reflectance 0.20

Cone of Light			
2	588	1.3	1.3
3	156	2.5	2.5
5	68.0	3.7	3.8
7	37.9	5.0	5.0
8	24.7	6.2	6.2
10	17.0	7.5	7.5
(FT.) Distance to Plane	(FC.) Initial Footcandle at Nadir	(FT.) Beam Vert. Spread	(FT.) Beam Horiz. Spread

BEAM DIA. MEASURED AT 50% OF NADIR F.C.

RC - Ceiling Cavity Reflectance  
RC - Ceiling Cavity Reflectance

**A1R-F-1102-LED-1000L-DIM10-120-MD-30K-90-CL**

**TEST NO.: EL05082054**

INPUT WATTS: **14.4**

LUMENS: **1008**

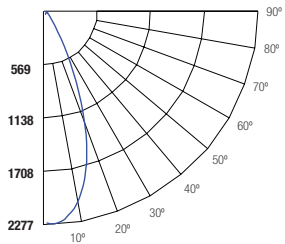
CRI: **90**

EFFICACY: **70**

CCT: **3000K**

SPACING CRITERIA: **0.64**

**Candle Power Distribution (Candelas)**



**Zonal Lumens Summary**

Zone	Lumens	%Lamp	%Fixt
0-20	660.22	65.5	65.5
0-30	960.91	95.3	95.4
0-40	999.95	99.2	99.2
0-60	1006.06	99.8	99.8
0-80	1006.62	99.9	99.9
0-90	1006.64	99.9	99.9

**Luminance (Average candela/M<sup>2</sup>)**

Angle in Degrees	Average 0°	Average 45°	Average 90°
45	2048	1876	2004
55	841	922	1140
65	445	369	24
75	13	13	26
85	39	39	79

**Lumens Per Zone**

Zone	Lumens
0-10	204.56
10-20	455.66
20-30	300.69
30-40	39.04
40-50	4.15
50-60	1.97
60-70	0.5
70-80	0.06
80-90	0.02

**Candela Tabulation**

Q	
0	2261.13
5	2228.41
15	1665.24
25	597.17
35	30.5
45	4.23
55	1.41
65	0.55
75	0.01
85	0.01
90	0.01

**Coefficients of Utilization - Zonal Cavity Method**

Effective Floor Cavity Reflectance 0.20

Cone of Light			
2	782	1.3	1.3
3	208	2.5	2.4
5	90.4	3.8	3.7
7	50.4	5.0	5.0
8	32.8	6.2	6.1
10	22.6	7.5	7.5
(FT.) Distance to Plane	(FC.) Initial Footcandle at Nadir	(FT.) Beam Vert. Spread	(FT.) Beam Horiz. Spread

BEAM DIA. MEASURED AT 50% OF NADIR F.C.

RC - Ceiling Cavity Reflectance  
RC - Ceiling Cavity Reflectance