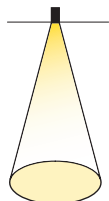
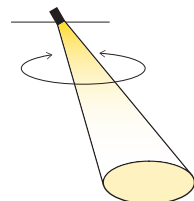




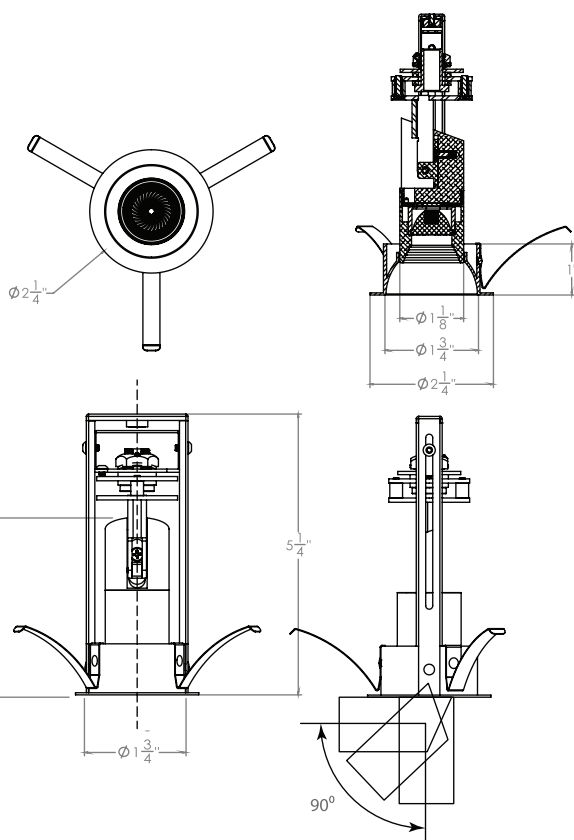
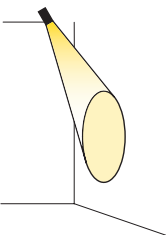
Downlight



360° Rotation



0-90° Tilt



#### DOWNLIGHT, PINHOLE, ADJUSTABLE: ALL-IN-ONE

The A1-LED architectural downlight in a small 1" aperture delivers a powerful, precise beam of light with uniform, glare-free illumination. Functions as a downlight, pinhole, and adjustable downlight all-in-one.

**FULL AIMING** Pull-down mechanism extends upper module up to 2 inches, tilting up to 90° and rotating up to 360°, and locks securely into position. Reflector can be adjusted to cover cavity when adjusting the module.

**INSTALLATION** A unique rotate-and-lock function provides easy installation and adjustability.

LUMENS	800
CCT	27K, 30K, 35K, 40K, 50K
CRI	90
COLOR QUALITY	2 Step MacAdam Ellipse
OPTIC	MD (Medium) *Consult factory for narrow or wide distribution
FINISH	White
DIMMING	DIM10 (0-10V dimming), DIMTR ( Triac & Electronic low voltage dimming. Available in 120V only)
SHAPE	Round (Pull-Down)
PHOTOMETRIC TESTS	In Accordance with IES LM79 and LM80



NOMINAL LUMENS	DELIVERED LUMENS	WATTAGE
800	812	10 W

Based on 3000K, 90+ CRI. Actual wattage may vary +/- 5%

## TRIM OPTIONS ( Select only one )



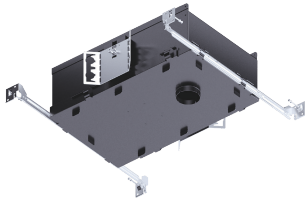
**A1R-F-1106-LED** -  
1" Round LED Adjustable and  
Fixed Downlight

Example: **A1R-F-1106-LED-800L-MD-30K-90-W-WH**

A1R-F-1106-LED					
SERIES	PERFORMANCE	DISTRIBUTION	CCT	CRI	FINISH
A1R-F-1106-LED	800L - 800 lumens	MD - Medium *Consult factory for narrow or wide distribution	27K - 2700K 30K - 3000K 35K - 3500K 40K - 4000K 50K - 5000K	90 - 90 CRI	W-WH - White

## HOUSING OPTIONS ( Select only one )

IC NEW CONSTRUCTION



Example: **A1R-LED-IC-10W-DIM10-MVOLT-BP30**

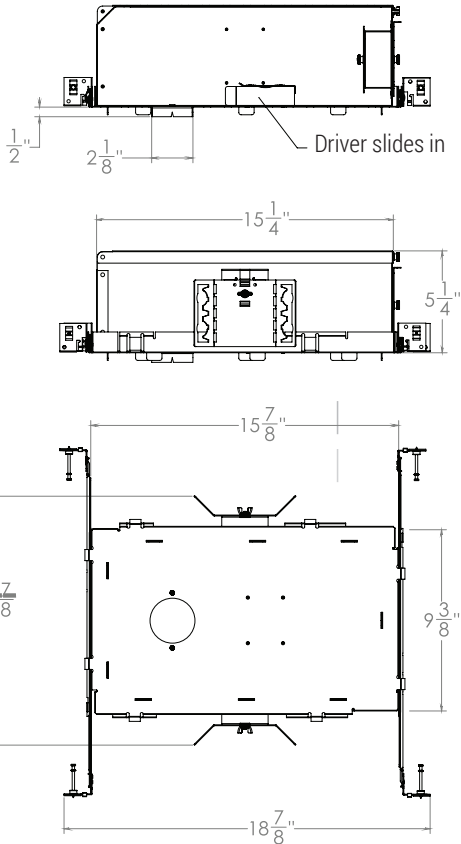
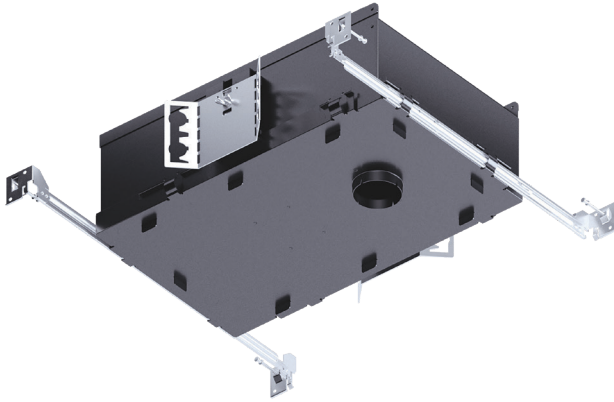
			BP30
POWER PACK	DIMMING	VOLTAGE	DRIVER
A1R-LED-IC-10W - For 800L Lumens A1R-LED-IC-15W - For 1000 Lumens	DIM10 DIMTR - Triac (120V only)	120 277 MVOLT DIMTR - only 120V	BP30

NON-IC REMODEL/ NEW CONSTRUCTION



Example: **A1R-LED-R-10W-DIM10-MVOLT-BP30**

			BP30
POWER PACK	DIMMING	VOLTAGE	DRIVER
A1R-LED-R-10W - For 800 Lumens A1R-LED-R-15W - For 1000 Lumens	DIM10 - 0-10V DIMTR - Triac (120V only)	120 277 MVOLT DIMTR - only 120V	BP30



NOMINAL LUMENS	DELIVERED LUMENS	WATTAGE
800	812	10W

Based on 3000K, 90+ CRI. Actual wattage may vary +/- 5%

#### IC HOUSING

Thermally protected, specification grade adjustable recessed housing. For new construction insulated ceilings where housing will be in direct contact with insulation. Die-formed all aluminum construction matte black painted for maximum heat dissipation, rust protection and glare free illumination.

#### ELECTRICAL/TRANSFORMER

Junction box and driver can be accessed from below the ceiling and above the ceiling. Junction box is listed for through branch circuit wiring, 12 AWG 90° C supply conductors, and has four 1/2" KOs, one 3/4" KO and four Romex knockouts with true pry-out slots and strain clamps.

#### DIMMING & DRIVER INFORMATION

DIM10 - 0-10V dimming on either MVOLT 120V or 277V. Dimmable down to 5% of initial lumens, standard.

DIMTR - Triac & Electronic low voltage dimming. Available in 120V only.

#### ACCESSIBLE DRIVER

Driver is connected to wire, which is attached to body of luminaire. Driver is housed within the housing, and can be accessed from below the ceiling by a simple pull-down mechanism.

#### MOUNTING

Pre-installed bar hangers allow housing to be positioned and locked at any point within a 24" joist span. They can be positioned on either the long or short axis of the housing and can be shortened for 12" joists. A double-headed real nail attaches housing securely into the joist. Bar hanger nails are installed on a 20° downward angle for better contact, and the 90° pivoting mounting plate makes installation fast and accurate. Bar hangers can fit onto T-Bar spline with additional slots and holes for special mounting methods if necessary. 18-gauge steel butterfly brackets can be adjusted vertically. Butterfly brackets may be installed with 3/4" or 1-1/2" lathing channel, 1/2" EMT, or optional C-Channel mounting bars are available.

#### LABELS

c-UL-us listed for damp location

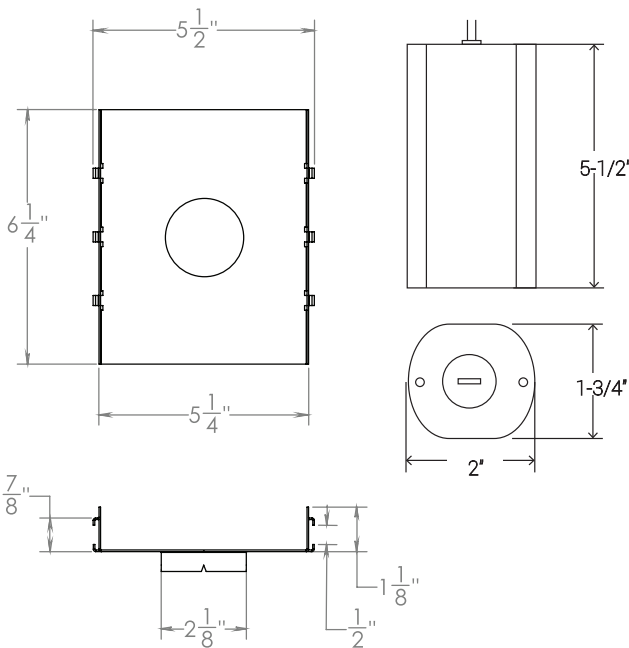
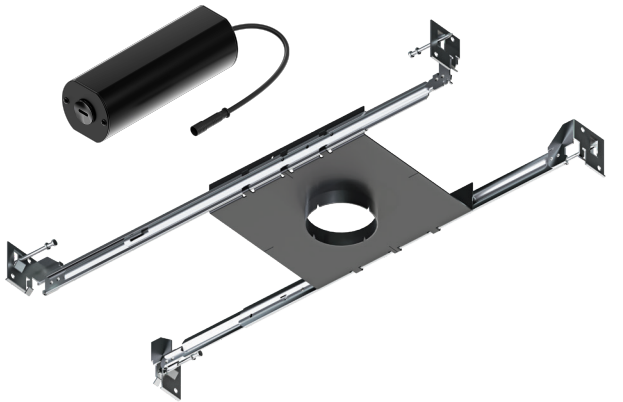
c-UL-us listed for feed through wiring

c-UL-us listed for direct contact with insulation

#### WARRANTY

5-year limited warranty for parts and components (labor not included).

LUMENS	800 - A1R-LED-IC-10W
DIMMING	DIM10 (0-10V dimming), DIMTR ( Triac- 120V only)
VOLTAGE	120V, 277V, MVOLT



NOMINAL LUMENS	DELIVERED LUMENS	WATTAGE
800	812	10W

Based on 3000K, 90+ CRI. Actual wattage may vary +/- 5%

#### IC HOUSING

Thermally protected, specification grade adjustable recessed housing. For new construction insulated ceilings where housing will be in direct contact with insulation. Die-formed all aluminum construction matte black painted for maximum heat dissipation, rust protection and glare free illumination.

#### ELECTRICAL/TRANSFORMER

Junction box and driver can be accessed from below the ceiling and above the ceiling. Junction box is listed for through branch circuit wiring, 12 AWG 90° C supply conductors, and has four 1/2" KOs, one 3/4" KO and four Romex knockouts with true pry-out slots and strain clamps.

#### DIMMING & DRIVER INFORMATION

DIM10 - 0-10V dimming on either MVOLT 120V or 277V. Dimmable down to 5% of initial lumens, standard.

DIMTR - Triac & Electronic low voltage dimming. Available in 120V only.

#### ACCESSIBLE DRIVER

Driver is connected to wire, which is attached to body of luminaire. Driver is housed within the housing, and can be accessed from below the ceiling by a simple pull-down mechanism

#### MOUNTING

Pre-installed bar hangers allow housing to be positioned and locked at any point within a 24" joist span. They can be positioned on either the long or short axis of the housing and can be shortened for 12" joists. A double-headed real nail attaches housing securely into the joist. Bar hanger nails are installed on a 20° downward angle for better contact, and the 90° pivoting mounting plate makes installation fast and accurate. Bar hangers can fit onto T-Bar spline with additional slots and holes for special mounting methods if necessary. 18-gauge steel butterfly brackets can be adjusted vertically. Butterfly brackets may be installed with 3/4" or 1-1/2" lathing channel, 1/2" EMT, or optional C-Channel mounting bars are available.

#### LABELS

c-UL-us listed for damp location

c-UL-us listed for feed through wiring

c-UL-us listed for direct contact with insulation

#### WARRANTY

5-year limited warranty for parts and components (labor not included).

LUMENS	800 - <b>A1R-LED-R-10W</b>
DIMMING	DIM10 (0-10V dimming), DIMTR ( Triac-120V only)
VOLTAGE	120V, 277V, MVOLT

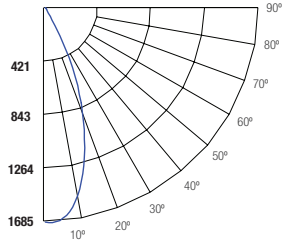


**A1R-F-1106-LED-800L-MD-30K-90-W-WH**

**TEST NO.: EL103119135**

INPUT WATTS: **9.9** LUMENS: **812** CRI: **90** EFFICACY: **82** CCT: **3000K** SPACING CRITERIA: **1.68**

**Candle Power Distribution (Candelas)**



Cone of Light			
Beam Dia. (ft.)	Beam Dia. (in.)	Beam Dia. (ft.)	Beam Dia. (in.)
2	581	1.4	1.3
3	154	2.6	2.6
5	67.2	4.0	3.9
7	37.4	5.3	5.2
8	24.4	6.6	6.4
10	16.8	8.0	7.8

BEAM DIA. MEASURED AT 50% OF NADIR F.C.

**Zonal Lumens Summary**

Zone	Lumens	%Lamp	%Fixt
0-20	492.86	60.7	60.7
0-30	746.47	92	92
0-40	777.77	95.8	95.8
0-60	799.81	98.6	98.6
0-80	810.7	99.9	99.9
0-90	810.72	99.9	99.9

**Luminance (Average candela/M<sup>2</sup>)**

Angle in Degrees	Average 0°	Average 45°	Average 90°
45	7842	7586	7068
55	7824	7472	6899
65	7047	6958	6658
75	2579	3161	4087
85	39	39	79

**Lumens Per Zone**

Zone	Lumens
0-10	150.89
10-20	341.98
20-30	253.61
30-40	31.3
40-50	11.48
50-60	10.57
60-70	8.08
70-80	2.81
80-90	0.01

**Candela Tabulation**

Q	
0	1679.71
5	1648.64
15	1159.47
25	465.7
35	21.1
45	16.2
55	13.11
65	8.7
75	1.95
85	0.01
90	0.01

**Coefficients of Utilization - Zonal Cavity Method**

Effective Floor Cavity Reflectance 0.20

RC	RW	80%				70%				50%				30%				10%				0%
		70%	50%	30%	10%	70%	50%	30%	10%	50%	30%	10%		50%	30%	10%		50%	30%	10%		
0	119	119	119	119	116	116	116	116	111	111	111	106	106	106	102	102	102	100	100	100	100	
1	114	112	110	108	112	110	108	106	106	104	103	102	101	100	98	97	97	95	95	95	95	
2	110	105	102	99	107	104	100	98	100	98	96	97	95	94	95	93	92	90	90	90	90	
3	105	100	95	92	103	98	94	91	96	92	90	93	91	88	91	89	87	85	85	85	85	
4	101	94	90	86	99	93	89	86	91	88	85	89	86	84	88	85	83	81	81	81	81	
5	97	90	85	81	95	89	84	81	87	83	80	86	82	80	84	81	79	78	78	78	78	
6	93	86	81	77	92	85	80	77	84	79	76	82	79	76	81	78	75	74	74	74	74	
7	90	82	77	73	89	81	77	73	80	76	73	79	75	72	78	75	72	71	71	71	71	
8	86	79	74	70	85	78	73	70	77	73	70	76	72	69	75	72	69	68	68	68	68	
9	83	75	70	67	82	75	70	67	74	70	67	73	69	67	72	69	66	65	65	65	65	
10	80	72	68	64	80	72	67	64	71	67	64	70	67	64	70	66	64	63	63	63	63	

RC - Ceiling Cavity Reflectance

RC - Ceiling Cavity Reflectance