



EASY 5 COLORS
SELECCTOR
2700K • 3000K • 3500K • 4000K • 5000K

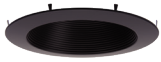


TRIM INSERTS OPTIONS

BAFFLES



REL537-BT-SN-SN



REL537-BT-P-BK



REL537-BT-DBZ-DBZ

REFLECTORS



REL537-RT-CL-WH



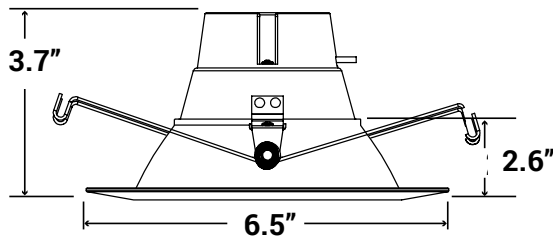
REL537-RT-DBZ-DBZ



REL537-RT-P-BK

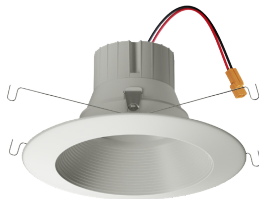


REL537-RT-SN-SN



NOMINAL LUMENS	DELIVERED LUMENS	WATTAGE
950	1168	14W

Based on 4000K, 90+ CRI. Actual wattage may vary +/- 5%



INSTALLATION

Elite LED Retrofits come standard with quick connectors ready for installation in Elite Lighting's LD series recessed housing that are Energy Star and Title 24 rated (LD4IC-AT, LD5IC, LD6IC-AT).

You MUST seal all gaps between the ceiling and fixture with weatherproof silicone sealant. This deters moisture and water from damaging fixtures and other mechanical ceiling elements.

FEATURES

Elite REL Retrofits are ideal for new construction or remodel applications when paired with an Elite recessed housing. Engineered for quick and easy retrofitting into existing incandescent recessed housings. An easy 5-Color SeleCCTor switch allows the contractor to easily switch between 5 different color temperatures in the field. Multiple trim types, trim finishes, and apertures make the REL Retrofits perfect for hotels and restaurants, assisted living facilities, dormitories, and kitchens.

LUMENS	950
CCT	27K/30K/35K/40K/50K
CRI	90+
COLOR QUALITY	3 Step MacAdam Ellipses
TRIM	Baffle, Aluminum die-cast body and trim
REFLECTOR COLORS	WH (White)
FLANGE COLORS	W (White)
DIMMING	DIMTR (Triac)
LIFETIME	50,000 Hours
EMERGENCY	16W high voltage inverter (Installed into the housing)*
PHOTOMETRIC TESTS	In Accordance with IES LM79-08, LM80 and TM-30, TM-21

* Consult Factory

EASY 5-COLOR SELECCTOR SWITCH

Easy 5-Color SeleCCTor switch can be adjusted to a choice of 5 different Kelvin color temperatures in the field. Options include 27K/30K/35K/40K/50K. The SeleCCTor switch is located on the junction box for easy adjustment before and after installation. The SeleCCTor switch is easily accessible by lowering the luminaire from the opening.

CONSTRUCTION

Die-cast aluminum body for maximum heat dissipation. Baffle and reflector trims are available.

OPTICS

A 55-degree cutoff angle delivers glare-free, even illumination.

COMPATIBLE WITH ELITE 6" HOUSINGS

The Elite REL637 series works in Elite housings (LD4IC-AT, LD5IC, LD6IC-AT) and existing 6" incandescent housings. Elite LED Retrofits are shipped with a medium-based socket adapter to allow installation into housings with an E26 incandescent medium-based socket. Also suitable for use in most 6" and 5" incandescent recessed downlight housings.

QUICK AND EASY INSTALLATION

Quick connectors for use with 5" or 6" housing or Edison base adapter for retrofitting into existing 6" incandescent housings.

Torsion springs pre-installed onto both sides of fixture, installing easily in most 6" incandescent downlights.

Insert torsion springs into can and press trim to ceiling. Friction blades are also included.

APPLICATIONS

Damp and wet-location-rated ideal for indoor and outdoor use, shower, and other wet-location applications. IC-Rated and Air Tight and may be installed in direct contact with insulation.

DRIVER ELECTRICAL INFORMATION

Driver is rated for 50 to 60Hz at 120V/277V input, produces less than 20% THD, has a power factor between 90% and 100%, and is thermally protected for additional safety.

DIMMING & DRIVER INFORMATION

DIMTR - Triac & electronic low voltage (DIMTR-120) flicker-free dimming. Available in 120V. Dimmable down to 5% of initial lumens, standard.

WARRANTY

Five-year warranty for parts and components. (Labor not included)

LISTINGS

Energy Star
cETLus
Title 24
JA8E
RoHS
IECC
New York State

EXAMPLE: **REL537-950L-DIMTR-120-27K/30K/35K/40K/50K-90-W-WH**

TYPE	LUMEN	CCT	CRI	FINISH
REL537	<input type="checkbox"/> 950L-DIMTR-120	<input type="checkbox"/> 27K/30K/35K/40K/50K	<input type="checkbox"/> 90+	<input type="checkbox"/> W-WH-White

TRIM RING ACCESSORY: **REL537-BT-SN-SN**

BT - BAFFLE	RT - Reflector
<input type="checkbox"/> REL537-BT-SN-SN <input type="checkbox"/> REL537-BT-P-BK <input type="checkbox"/> REL537-BT-DBZ-DBZ	<input type="checkbox"/> REL537-RT-CL-WH <input type="checkbox"/> REL537-RT-DBZ-DBZ <input type="checkbox"/> REL537-RT-P-BK <input type="checkbox"/> REL537-RT-SN-SN





*Trim accessories order separate

ACCESSORY: **GU24SA**

OPTIONS
<input type="checkbox"/> GU24SA - SOCKET FOR LED RETROFIT TO GU24

*Accessories order separate

EXAMPLE: **HLD5IC-AT**

COMPATIBLE ELITE LIGHTING HOUSINGS			
 IC RATED		 IC RATED	
<input type="checkbox"/> LD5IC	<input type="checkbox"/> LD5-AT	<input type="checkbox"/> LD5RIC-AT	<input type="checkbox"/> LD5R-AT
<input type="checkbox"/> HLD5IC-AT	<input type="checkbox"/> HLD5-AT	<input type="checkbox"/> HLD5RIC-AT	<input type="checkbox"/> HLD5R-AT
<input type="checkbox"/> LD500IC-AT	<input type="checkbox"/> B5-AT	<input type="checkbox"/> EZ5IC-AT	<input type="checkbox"/> B5R-AT
<input type="checkbox"/> EZ5IC-AT		<input type="checkbox"/> B5RIC-AT	
<input type="checkbox"/> B5IC-AT			
<input type="checkbox"/> B5IC-100-AT			
<input type="checkbox"/> B500-IC			

*Housing order separate

COMPATIBLE DIMMER

DIMMER	BRAND	DIMMER	BRAND	DIMMER	BRAND
MACL-153M	Lutron	PD-5NE	Lutron	DDL06-BLZ	Leviton
DVCL-153P	Lutron	NTCL-250	Lutron	DDM06-1LZ	Leviton
SCL-153P	Lutron	MRF2S-6ELV120	Lutron	DSL06-1LZ	Leviton
MSCl-OP153M	Lutron	DVELV-303-P	Lutron	DH6HD-1BZ	Leviton
PD-6WCL	Lutron	MAELV-600	Lutron	DL6HD-1BZ	Leviton
PD-10NXD	Lutron	MA-PRO	Lutron	DW6HD-1BZ	Leviton
DVRP-253P	Lutron	6672-1LW	Leviton	DZ6HD-1BZ	Leviton
DVCL-253P	Lutron	DDL06-1LZ	Leviton	RNL06-10Z	Leviton
DSE06-10Z	Leviton	VPE06-1LZ	Leviton	DDE06-BLZ	Leviton
				RH703PTUW	Legrand

REL537-950L-DIMTR-120-27K-30K-35K-40K-50K-90-W-WH

TEST NO.: EL011932

INPUT WATTS: 13.9861

LUMENS: 1168

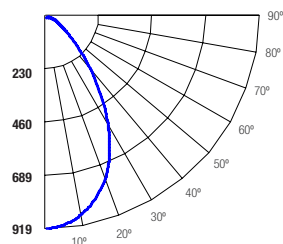
CRI: 90

EFFICACY: 84

CCT: 4000K

SPACING CRITERIA: 1.00

Candle Power Distribution (Candelas)



Zonal Lumens Summary

Zone	Lumens	%Lamp	%Fixt
0-20	317.74	28.60	27.20
0-30	622.69	56.10	53.30
0-40	888.37	80.10	76.10
0-60	1121.84	101.10	96.10
0-80	1166.84	105.20	99.90
0-90	1166.87	105.20	99.90

Luminance (Average candela/M²)

Angle in Degrees	Average 0°	Average 45°	Average 90°
45	22518	24395	26847
55	11244	11997	13037
65	6686	7182	7808
75	2113	2645	3478
85	20	20	20

Lumens Per Zone

Zone	Lumens
0-10	85.67
10-20	232.07
20-30	304.95
30-40	265.69
40-50	158.78
50-60	74.69
60-70	35.64
70-80	9.36
80-90	0.02

Candela Tabulation

0	0
0	917.55
5	904.43
15	819.10
25	649.67
35	402.77
45	186.06
55	75.36
65	33.02
75	6.39
85	0.02
90	0.02

Coefficients of Utilization - Zonal Cavity Method

Effective Floor Cavity Reflectance 0.20

	RC	80%				70%				50%				30%				10%				0%
	RW	70%	50%	30%	10%	70%	50%	30%	10%	50%	30%	10%	50%	30%	10%	50%	30%	10%	0%			
ROOM CAVITY RATIO	0	125	125	125	125	122	122	122	122	117	117	117	112	112	112	107	107	107	105			
	1	118	115	112	109	116	113	110	107	108	106	104	104	103	101	101	99	98	96			
	2	111	105	100	96	109	103	98	95	100	96	92	96	93	90	93	91	89	87			
	3	104	96	90	85	102	95	89	84	92	87	83	89	85	81	86	83	80	78			
	4	98	88	81	76	95	87	80	76	84	79	75	82	78	74	80	76	73	71			
	5	92	81	74	69	90	80	73	68	78	72	68	76	71	67	75	70	66	65			
	6	86	75	68	62	84	74	67	62	72	66	62	71	65	61	69	65	61	59			
	7	81	70	62	57	79	69	62	57	67	61	57	66	60	56	65	60	56	54			
	8	76	65	58	53	75	64	57	52	63	57	52	62	56	52	61	56	52	50			
	9	72	61	53	49	71	60	53	49	59	53	48	58	52	48	57	52	48	46			
10	68	57	50	45	67	56	50	45	55	49	45	54	49	45	54	48	45	43				

RC - Ceiling Cavity Reflectance

RW - Wall Reflectance