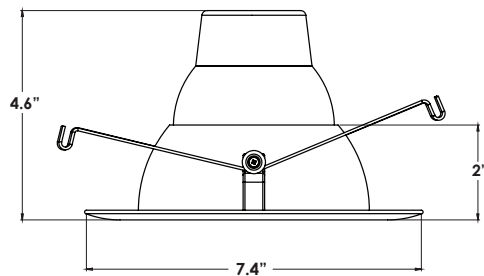




EASY 5 COLORS  
**SELECCTOR**  
2700K • 3000K • 3500K • 4000K • 5000K



NOMINAL LUMENS	DELIVERED LUMENS	WATTAGE
950	963	10W
1200	1233	14W

Based on 4000K, 90+ CRI. Actual wattage may vary +/- 5%



#### INSTALLATION

Elite LED Retrofits come standard with quick connectors ready for installation in Elite Lighting's LD series recessed housing that are Energy Star and Title 24 rated (LD4IC-AT, LD5IC, LD6IC-AT).

#### FEATURES

The Elite RL631 has been engineered for new construction and retrofit applications for 6-inch downlights. An easy 5-Color SeleCCTor switch allows the contractor to easily switch between five different color temperatures in the field. The RL631 is compatible with most 6" recessed housing for quick, easy installation in healthcare, hospitality, office, residential, and retail applications.

LUMENS	950, 1200
CCT	27K/30K/35K/40K/50K
CRI	90+
COLOR QUALITY	3 Step MacAdam Ellipses
TRIM	Aluminum die-cast body and trim
REFLECTOR COLORS	W (White)
FLANGE COLORS	WH (White)
DIMMING	DIMTR (Triac)
LIFETIME	50,000 Hours

#### EASY 5-COLOR SELECCTOR SWITCH

Easy 5-Color SeleCCTor switch can be adjusted to a choice of 5 different Kelvin color temperatures in the field. Options include 27K/30K/35K/40K/50K. The SeleCCTor switch is located on the junction box for easy adjustment before and after installation. The SeleCCTor switch is easily accessible by lowering the luminaire from the opening.

### CONSTRUCTION

Die-cast aluminum body for maximum heat dissipation.

### OPTICS

A regressed baffle provides glare-free, comfortable illumination and a 45-degree cutoff.

### COMPATIBLE WITH ELITE 4" HOUSINGS

The Elite RL631 series works in Elite housings (LD6IC-AT and LD6RIC-AT) and existing Elite 6" incandescent housings (B6IC-AT, EZ6IC-AT, B26ICAT, B26RIC-AT, B6RIC-AT). Also suitable for use in most 6" recessed downlight housings.

### QUICK AND EASY INSTALLATION

Quick connectors for use with 5" or 6" housing or Edison base adapter for retrofitting into existing 6" incandescent housings.

Torsion springs pre-installed onto both sides of fixture, installing easily in most 6" incandescent downlights.

Insert torsion springs into can and press trim to ceiling. Friction blades are also included.

### FLEXIBILITY IN DESIGN - MULTIPLE BAFFLE FINISHES AND REFLECTOR FINISHES

The R631 is available in multiple baffle finishes and reflector finishes: multiple combinations of bronze, copper, white, specular clear, matte black, satin haze, and gold.

### APPLICATIONS

Damp and wet-location-rated ideal for indoor and outdoor use, shower, and other wet-location applications. IC-Rated and Air Tight and may be installed in direct contact with insulation.

### DRIVER ELECTRICAL INFORMATION

Driver is rated for 50 to 60Hz at 120V/277V input, produces less than 20% THD, has a power factor between 90% and 100%, and is thermally protected for additional safety.

### DIMMING & DRIVER INFORMATION

DIMTR - Triac & electronic low voltage (DIMTR-120) flicker-free dimming. Available in 120V. Dimmable down to 10% of initial lumens, standard.

### WARRANTY

Five-year warranty for parts and components. (Labor not included)


### LISTINGS

Energy Star  
cETLus  
Title 24  
JA8E  
RoHS  
IECC  
New York State

#### EXAMPLE: RL631-950L-DIMTR-120-27K/30K/35K/40K/50K-90-W-WH





TYPE	LUMEN	CCT	CRI	TRIM COLORS
RL631	<input type="checkbox"/> 950L-DIMTR-120 <input type="checkbox"/> 1200L-DIMTR-120	<input type="checkbox"/> 27K/30K/35K/40K/50K	<input type="checkbox"/> 90+	<input type="checkbox"/> W-WH

#### ACCESSORY: GU24SA

OPTIONS	
	<input type="checkbox"/> GU24SA - SOCKET FOR LED RETROFIT TO GU24

\*Accessories order separate

#### EXAMPLE: HLD6IC-AT

COMPATIBLE ELITE LIGHTING HOUSINGS			
 <b>IC RATED</b>		 <b>IC RATED</b>	
<input type="checkbox"/> LD6IC	<input type="checkbox"/> LD6-AT	<input type="checkbox"/> LD6RIC-AT	<input type="checkbox"/> LD6R-AT
<input type="checkbox"/> HLD6IC-AT	<input type="checkbox"/> HLD6-AT	<input type="checkbox"/> HLD6RIC-AT	<input type="checkbox"/> HLD6R-AT
<input type="checkbox"/> LD600IC-AT	<input type="checkbox"/> B6-AT	<input type="checkbox"/> EZ6IC-AT	<input type="checkbox"/> B6R-AT
<input type="checkbox"/> EZ6IC-AT		<input type="checkbox"/> B6RIC-AT	
<input type="checkbox"/> B6IC-AT			
<input type="checkbox"/> B6IC-100-AT			
<input type="checkbox"/> B600-IC			

\*Housing order separate

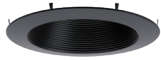
#### EXAMPLE: RL631-BT-BZ-BZ

RING TRIM COLORS		
<input type="checkbox"/> RL631-BT-BZ-BZ	<input type="checkbox"/> RL631-RT-BZ-BZ	<input type="checkbox"/> RL631-RT-MB-WH
<input type="checkbox"/> RL631-BT-CP-CP	<input type="checkbox"/> RL631-RT-CL-WH	<input type="checkbox"/> RL631-RT-RG-WH
<input type="checkbox"/> RL631-BT-P-BK	<input type="checkbox"/> RL631-RT-CL-CH	<input type="checkbox"/> RL631-RT-SHZ-SHZ
<input type="checkbox"/> RL631-BT-P-WH	<input type="checkbox"/> RL631-RT-CP-CP	<input type="checkbox"/> RL631-RT-SHZ-WH
<input type="checkbox"/> RL631-BT-SN-SN	<input type="checkbox"/> RL631-RT-MB-BK	<input type="checkbox"/> RL631-RT-SN-SN
<input type="checkbox"/> RL631-BT-DBZ-DBZ	<input type="checkbox"/> RL631-RT-W-WH	
<input type="checkbox"/> RL631-RT-SN-WH	<input type="checkbox"/> RL631-RT-DBZ-DBZ	

\*Ring trims order separate

**AVAILABLE COLOR INSERTS FOR RL631 - 6" RETROFIT**

**BAFFLES**



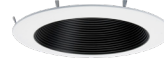
RL631-BT-P-BK



RL631-BT-BZ-BZ



RL631-BT-SN-SN



RL631-BT-P-WH



RL631-BT-CP-CP

**REFLECTORS**



RL631-RT-SHZ-WH



RL631-RT-RG-WH



RL631-RT-CP-CP



RL631-RT-BZ-BZ



RL631-RT-CL-WH



RL631-RT-W-WH



RL631-RT-SHZ-SHZ



RL631-RT-MB-WH



RL631-RT-SN-SN



RL631-RT-MB-BK



RL631-RT-CL-CH

**RL631-1200L-DIMTR-120-27K-30K-35K-40K-50K-90-W-WH**

TEST NO.: **EL10071937**

INPUT WATTS: **14.6**

LUMENS: **1233**

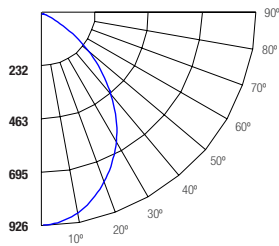
CRI: **90**

EFFICACY: **84**

CCT: **4000K**

SPACING CRITERIA: **1.06**

**Candle Power Distribution (Candelas)**



**Zonal Lumens Summary**

Zone	Lumens	%Lamp	%Fixt
0-20	322.9	26.2	26.2
0-30	646.12	52.4	52.4
0-40	942.86	76.5	76.5
0-60	1192.19	96.7	96.7
0-80	1231.88	99.9	99.9
0-90	1231.91	99.9	99.9

**Luminance (Average candela/M<sup>2</sup>)**

Angle in Degrees	Average 0°	Average 45°	Average 90°
45	93701	99462	112973
55	42408	45446	51599
65	22314	24258	27660
75	5052	6877	10898
85	79	79	79

**Lumens Per Zone**

Zone	Lumens
0-10	86.53
10-20	236.37
20-30	323.22
30-40	296.74
40-50	173.77
50-60	75.56
60-70	32.15
70-80	7.54
80-90	0.02

**Candela Tabulation**

0	9
0	924.32
5	911.46
15	829.2
25	688.15
35	443.49
45	193.56
55	71.06
65	27.55
75	3.82
85	0.02
90	0.02

**Coefficients of Utilization - Zonal Cavity Method**  
Effective Floor Cavity Reflectance 0.20

	RC	80%				70%				50%				30%			10%			0%
	RW	70%	50%	30%	10%	70%	50%	30%	10%	50%	30%	10%	50%	30%	10%	50%	30%	10%	0%	
ROOM CAVITY RATIO	0	119	119	119	119	116	116	116	116	111	111	111	106	106	106	102	102	102	100	
	1	112	109	106	104	110	107	104	102	103	101	99	99	97	96	96	94	93	91	
	2	106	100	95	91	103	98	94	90	95	91	88	92	89	86	89	86	84	82	
	3	99	91	85	81	97	90	84	80	87	83	79	85	81	77	82	79	76	74	
	4	93	84	77	72	91	83	77	72	80	75	71	78	74	70	76	72	69	67	
	5	87	77	70	65	85	76	70	65	74	69	64	72	68	64	71	67	63	61	
	6	82	71	64	59	80	70	64	59	69	63	59	67	62	58	66	61	58	56	
	7	77	66	59	54	75	65	59	54	64	58	54	63	57	53	61	57	53	51	
	8	72	61	54	50	71	61	54	50	60	54	49	58	53	49	57	53	49	47	
	9	68	57	50	46	67	57	50	46	56	50	46	55	49	45	54	49	45	44	
10	65	54	47	43	63	53	47	42	52	46	42	51	46	42	51	46	42	41		

RC - Ceiling Cavity Reflectance

RW - Wall Reflectance

Cone of Light			
2	320	2.4	2.4
4	84.9	4.7	4.7
6	37.0	7.2	7.1
8	20.6	9.6	9.6
10	13.4	11.9	11.9
12	9.24	14.4	14.3
(FT.) Distance to Plane	(FC) Initial Footcandle at Nadir	(FT.) Beam Vert. Spread	(FT.) Beam Horiz. Spread

BEAM DIA. MEASURED AT 50% OF NADIR F.C.