



FUTURE FIT

LED KITS

CATALOG NUMBER:
KT-RKIT32-4S-8XX-VDIM



DESCRIPTION

4' LED Retrofit Strip Kit, 32W, 120-277V, 0-10V Dimming



5 YEAR
WARRANTY

PRODUCT FEATURES

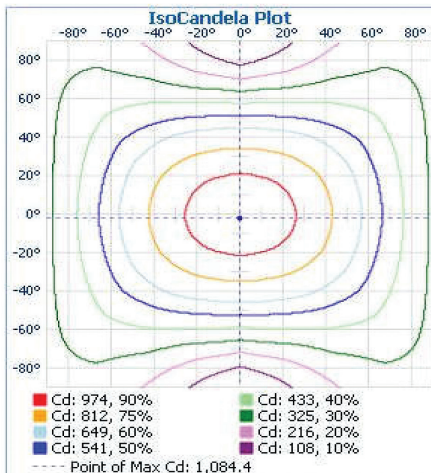
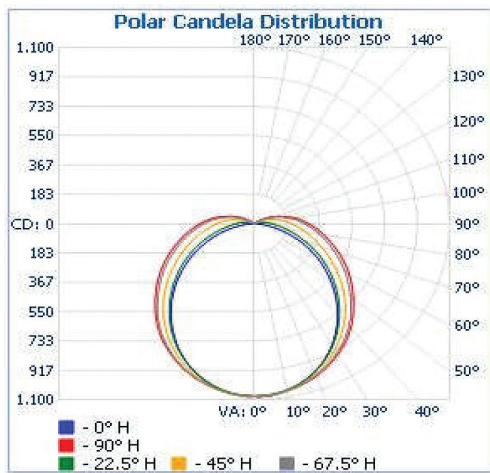
- Used to upgrade existing 4" wide strip fixtures, without modifying existing fixture mounting.
- Architectural Grade Design
- Powered by Keystone 0-10V Dimming LED Driver
- Compatible with Keystone SmartSafe LED Emergency Drivers
- Suitable for Damp Location
- Operating Temperature Range:-20° C to 50° C
- 5 Year Warranty
- DLC Listed
- 50,000 Hours Rated Life
- Over 50% Energy Savings as Compared to Traditional Fluorescent Troffers
- THD:<20%
- PF:>0.9

PERFORMANCE SPECIFICATIONS

Catalog Number	Input Voltage	Wattage	Color Temperature	Lumen Output	CRI	Power Factor	Efficacy	Lifetime
KT-RKIT32-4S-835-VDIM	120-277V	32	3500K	4160	>80	>0.9	130lm/W	50,000 Hour
KT-RKIT32-4S-840-VDIM	120-277V	32	4000K	4220	>80	>0.9	132lm/W	50,000 Hour
KT-RKIT32-4S-850-VDIM	120-277V	32	5000K	4350	>80	>0.9	136lm/W	50,000 Hour

PHOTOMETRIC SPECIFICATIONS

CATALOG NUMBER: **KT-RKIT32-4S-835-VDIM**



Zonal Lumen Summary

Zone	Lumens	% Luminaire
0-30	835.0	22%
0-40	1,367.0	36.1%
0-60	2,444.3	64.5%
60-90	1,030.3	27.2%
70-100	755.3	19.9%
90-120	299.6	7.9%
0-90	3,474.5	91.7%
90-180	316.4	8.3%
0-180	3,791.0	100%



FUTURE FIT
LED KITS

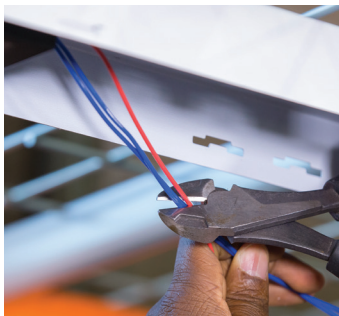
CATALOG NUMBER:
KT-RKIT32-4S-8XX-VDIM

INSTALLATION STEPS

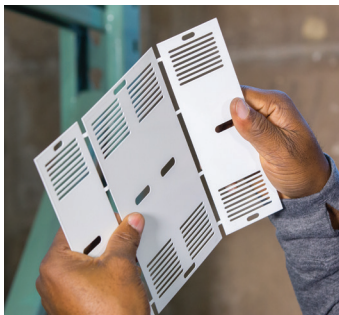
1. Shut off power to the fixture. Remove the existing fluorescent lamps and the ballast cover. Disconnect the ballast from the building's line voltage.



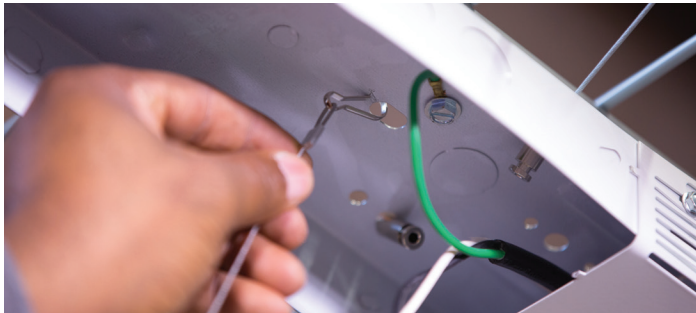
2. Cut the wire leads coming from the sockets and remove the sockets and socket bars on both ends of the fixture.



3. Break apart the 1-piece mounting bracket kit into 2 individual pieces. Install the brackets to each end of the fixture by bending them over the fixture to fit the exact width and fastening them to the fixture with the provided tek screws.



4. Fasten the safety cables (x2) from the retrofit pan(s) to the fixture housing using existing lances/holes of the fixture.



5. Make electrical connections for input power (via the included Power Quick Disconnect) and fixture ground. 0-10V connections optional.



6. Fasten the pans to the strip fixture with a quarter turn (provided) on each end.



7. Install the lens by gently squeezing it into the grooved edge of the pan.



8. Restore power to the fixture.

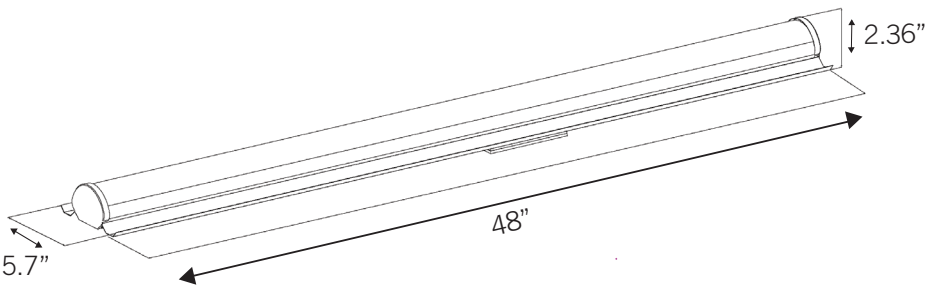




FUTURE FIT
LED KITS

CATALOG NUMBER:
KT-RKIT32-4S-8XX-VDIM

PHYSICAL SPECIFICATIONS



COMPONENT SUMMARY

Part	Qty.
Retrofit housing	1
Installation Bracket	2
Installation Instruction	1
Lens	1
Label	1

CATALOG NUMBER BREAKDOWN

KT-RKIT32-4S-8XX-VDIM

Keystone Technologies	Retrofit Kit	Wattage	4' Lamp Size	Type	CRI	Color Temp.	0-10V Dimmable
-----------------------	--------------	---------	--------------	------	-----	-------------	----------------