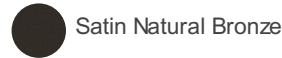




MOTOR FINISH



Satin Natural Bronze

BLADE FINISHES

Walnut



Damp Rated

AIR PERFORMANCE

AIRFLOW Cubic Ft. Per Minute on High	RPM Revolutions Per Minute on High	POWER USAGE Watts on High (Excludes Lights)	AIRFLOW EFFICIENCY Cubic Ft. Per Minute Per Watt	CFM (Low)	1522
4367	167	52	84	RPM (Low)	57
				Watts (Low)	9

SPECIFICATIONS

Light Source			
Downlight Option	Optional	Watts (High)	52
Watts (Low)	9		
Electrical			
Amps (High)	0.43	Amps (Low)	0.18
Motor Size	153MM X 15MM	Motor Type	AC
Dimensions			
Downrod 1	1.00 OD X 4.00"	Downrod 1 - Measurement A	9.50"
Downrod 1 - Measurement B	7.50"	Downrod 1 - Measurement C	11.50"
Base Backplate	5.25 DIA	Weight	17.92 LBS
Height	12.50"	Width	52.00"
Mounting/Installation			
Minimum Distance from Fan to Floor	7 feet	Interior/Exterior	Exterior
Lead Wire Length	78"	Location Rating	CSA UL Listed Damp
Low Ceiling Adaptable	Yes, Dual Mount Included	Mounting Weight	13.07 LBS

FIXTURE ATTRIBUTES

Product/Ordering Information			
SKU	330015SNB	Finish	Satin Natural Bronze
Style	Traditional	UPC	783927572064
Housing			
Primary Material	STEEL	Max Stem Tilt	22 Degrees
Blade Finish & Specs			
Blade Finish 1	WALNUT	Blade Material	ABS
Blade Sweep	52	Blades Included	Yes
Number of Blades	5		

Warranty			
----------	--	--	--

ALSO IN THIS FAMILY



330015MWH



330015SBK



330015WH

You can see all products in this family by searching **Kichler.com**