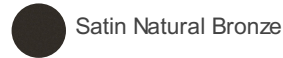




MOTOR FINISH



Satin Natural Bronze

BLADE FINISHES

Walnut



Damp Rated



Dimmable

AIR PERFORMANCE

AIRFLOW Cubic Ft. Per Minute on High	RPM Revolutions Per Minute on High	POWER USAGE Watts on High (Excludes Lights)	AIRFLOW EFFICIENCY Cubic Ft. Per Minute Per Watt	CFM (Low)	1522
4367	167	52	84	RPM (Low)	57
				Watts (Low)	9

SPECIFICATIONS

Light Source			
Downlight Option	Integrated	Downward-facing Bulbs	1 X 17
Watts (High)	52	Watts (Low)	9
Dimmable	Yes		
Photometrics			
Color Rendering Index	90	Kelvin Temperature	3000K
Electrical			
Amps (High)	0.43	Amps (Low)	0.07
Motor Size	153MM X 15MM	Motor Type	AC
Dimensions			
Downrod 1	1.00 OD X 4.00"	Downrod 1 - Measurement A	9.50"
Downrod 1 - Measurement B	7.50"	Downrod 1 - Measurement C	11.50"
Base Backplate	5.90 DIA	Weight	17.60 LBS
Height	12.50"	Width	52.00"
Mounting/Installation			
Interior/Exterior	Exterior	Lead Wire Length	78"
Location Rating	CSA UL Listed Damp	Low Ceiling Adaptable	Yes, Dual Mount Included
Mounting Weight	15.09 LBS		

FIXTURE ATTRIBUTES

Product/Ordering Information			
SKU	330019SNB	Finish	Satin Natural Bronze
UPC	783927572224		
Housing			
Remote Included	Yes	Diffuser Description	Frosted White Polycarbonate
Primary Material	STEEL	Max Stem Tilt	22 Degrees

Blade Finish & Specs

Blade Finish 1	WALNUT	Blade Material	WOOD
Blade Pitch	12	Blade Sweep	52
Blades Included	Yes	Number of Blades	5

Warranty

www.kichler.com/warranty

ALSO IN THIS FAMILY



330019MWH



330019SBK



330019WH

You can see all products in this family by searching **Kichler.com**