

SPECIFICATIONS

Certifications/Qualifications

| | |
|--------------------|--|
| ADA Compliant | Yes |
| Class 2 | Yes |
| Title 24 Compliant | Yes |
| | www.kichler.com/warranty |

Dimensions

| | |
|---|--------------|
| Base Backplate | 17.50 X 7.75 |
| Extension | 3.50" |
| Weight | 5.59 LBS |
| Height from center of Wall opening (Spec Sheet) | 2.75" |
| Height | 5.50" |
| Width | 18.25" |

Electrical

| | |
|---------------|--------------|
| Input Voltage | Single(120)V |
|---------------|--------------|

Light Source

| | |
|----------------------------|---|
| Delivered Lumens | 900 |
| Dimmable | Yes |
| Dimmable Notes | This LED is compatible with most standard incandescent dimmers, LED dimmers, and electronic low voltage dimmers. For more information, go to Kichler.com/dimming . |
| Expected Life Span (Hours) | 40000 |
| Lamp Included | Integrated |
| Light Source | LED |
| Max or Nominal Watt | 20W |
| # of Bulbs/LED Modules | 1 |

Mounting/Installation

| | |
|------------------------------|------------|
| Interior/Exterior | Interior |
| Location Rating | Damp |
| Mounting Style | Wall Mount |
| Mounting Weight | 7.25 LBS |
| Mount Vertical Or Horizontal | Yes |

Photometrics

| | |
|-------------------------|-------|
| Color Rendering Index | 90 |
| Color Temperature Range | 3000 |
| Kelvin Temperature | 3000K |

FIXTURE ATTRIBUTES

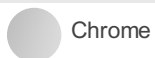
Housing

| | |
|----------------------|--------------------|
| Diffuser Description | Satin Etched White |
| Primary Material | GLASS |

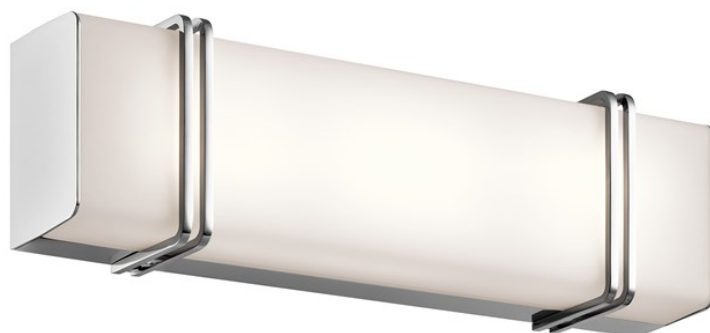
Product/Ordering Information

| | |
|--------|--------------|
| SKU | 45801CHLED |
| Finish | Chrome |
| Style | Contemporary |
| UPC | 783927453233 |

Finish Options



Chrome



ALSO IN THIS FAMILY



45838CHLED



45838OZLED



45839CHLED



45839OZLED