

SPECIFICATIONS

Certifications/Qualifications

www.kichler.com/warranty

Dimensions

Base Backplate	5.00 DIA
Extension	8.00"
Weight	3.50 LBS
Height from center of Wall opening (Spec Sheet)	3.50"
Height	9.25"
Width	16.00"

Light Source

Lamp Included	Not Included
Lamp Type	A19
Light Source	Incandescent
Max or Nominal Watt	75.00
# of Bulbs/LED Modules	2
Max Wattage/Range	75.00
Socket Type	Medium
Socket Wire	150"

Mounting/Installation

Install Glass Up or Down	Yes
Interior/Exterior	Interior
Location Rating	Damp
Mounting Style	Wall Mount
Mounting Weight	2.40 LBS

FIXTURE ATTRIBUTES

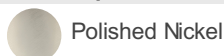
Housing

Diffuser Description	Clear
Primary Material	STEEL

Product/Ordering Information

SKU	55078PN
Finish	Polished Nickel
Style	Industrial
UPC	783927801546

Finish Options



Polished Nickel



ALSO IN THIS FAMILY



52377PN



55080PN



55079PN



52379PN



55077PN