

SPECIFICATIONS

Certifications/Qualifications

Prop65	Yes www.kichler.com/warranty
--------	---

Dimensions

Base Backplate	4.72 X 6.69 X 0.7
Extension	4.35"
Weight	6.60 LBS
Height from center of Wall opening (Spec Sheet)	6.00"
Height	4.75"
Length	25.25"
Overall Height	4.35"

Light Source

Delivered Lumens	2100
Dimmable	Yes
Lamp Included	Integrated
Light Source	LED
# of Bulbs/LED Modules	1

Mounting/Installation

Interior/Exterior	INTERIOR
Lead Wire Length	7"
Location Rating	Damp
Mounting Weight	6.60 LBS
Mount Vertical Or Horizontal	Yes

Photometrics

Color Rendering Index	90
Color Temperature Range	3000
Kelvin Temperature	3000K

FIXTURE ATTRIBUTES

Housing

Diffuser Description	Glass
Primary Material	GLASS
Shade Description	ETCHED OPAL GLASS
Shade Dimensions	6.60

Product/Ordering Information

SKU	83743
Finish	Brushed Nickel
Style	Contemporary
UPC	887913837431

Finish Options



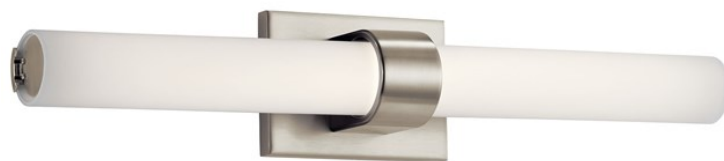
Bronze



Brushed Nickel



Chrome



ALSO IN THIS FAMILY



83744



83742



83747



83746



83745