

Three lamp monopoint

81353

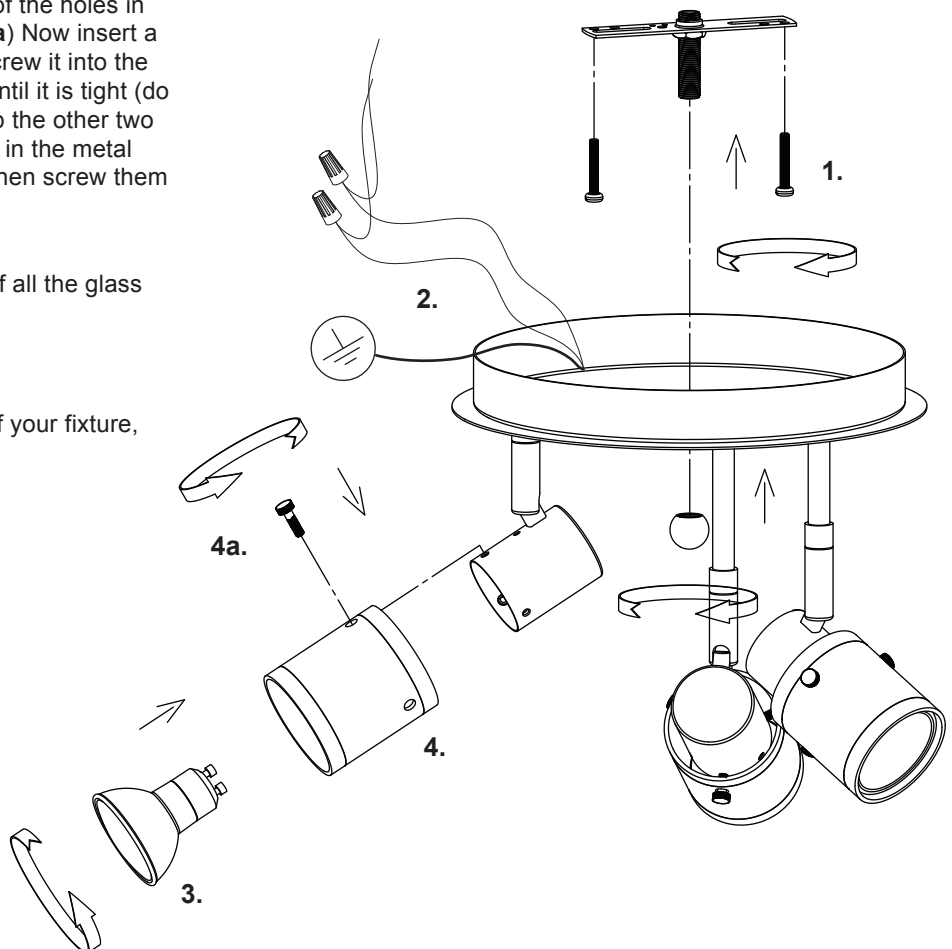
INSTALLATION SHEET

- 1.** Remove the fixture from its original packaging. Remove the canopy mounting plate from within the canopy and attach it to the electrical junction box using the two screws provided in the hardware package.
- 2.** Attach the canopy to the mounting plate, which is attached to the electrical junction box. First attach all wiring with the provided marrets (white to white "N", black to black "L", ground to ground "G"). Align the center hole in the canopy to the center screw in the middle of the mounting plate. Push the screw through the center hole in the canopy plate so it is poking through. Once this is complete you can screw on the decorative nut until tight.
- 3.** Now that your fixture is installed you can install the GU-10 light bulbs of the correct wattage.
- 4.** Locate the 9 screws from inside the hardware package. These screws are to hold the three glass lamp shades on to the fixture. Take the glass lamp shades and gently guide the light bulb into the center of the shade until one of the holes in the glass lines up with one of the holes in the side of the metal lamp socket head. **(4a)** Now insert a screw through the hole in the glass, and screw it into the hole on the side of the lamp socket head until it is tight (do not over tighten). Please proceed to line up the other two holes in the glass, with the other two holes in the metal lamp socket head, insert the screws, and then screw them in until they are tight (do not over tighten).
- 5.** Please repeat step 4 until the installation of all the glass lamp shades are complete.
- 6.** You have now completed the installation of your fixture, please enjoy.

START FROM HERE

- Make sure power is completely off at the fuse box.
- Have your fixture installed by a qualified licensed electrician
- Prepare everything in clear area.
- Wear gloves at all times during this installation.
- Read instructions carefully before you start assembly.
- Keep this instruction sheet for future reference.

Technical Support: 1-877-452-6858



KUZCO LIGHTING

19054 28th Avenue Surrey, BC Canada V3S 6M3
T: 604 538 7162 TF: 1-855 85 KUZCO F: 604 538 7196
W: kuzcolighting.com