

ANELLO  
FM12716  
SEMI FLUSH

PROJECT



FM12716-BK  
Black



FM12716-BN  
Brushed Nickel



FM12716-WT  
Walnut



FM12716-WH  
White

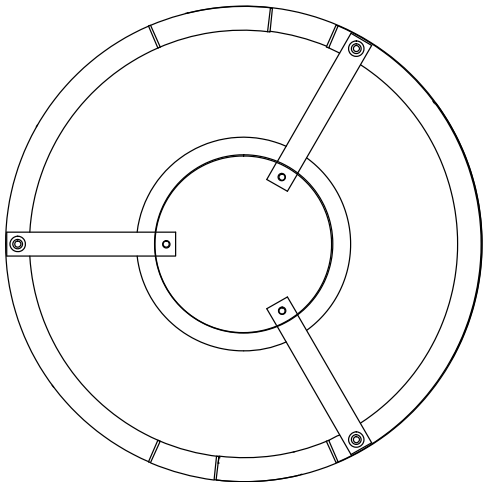
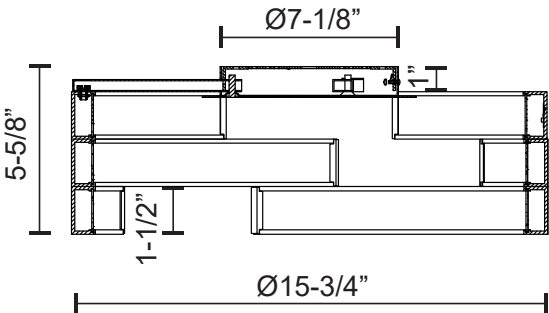
SPECIFICATION DETAILS

\* For custom options, consult factory for details.

Fixture Dimensions	D15-3/4" x H5-5/8"
Light Source	LED
Wattage	65W
Total Lumens	4800lm
Delivered Lumens	BK-1026lm; BN-1179lm; WH-1384lm; WT-1014lm;
Voltage	120V
Color Temperature	3000K
CRI (Ra)	>90
Optional Color Temps	2700K - 5000K Available, Minimum Order Quantities Apply
LED Rated Life	50,000 hours
Dimming	100% - 10%, ELV Dimmer (Not Included)
Diffuser Details	White Acrylic Diffuser
Location	Dry
Warranty	5 Years
Canopy Dimensions	D7-1/8" x H1"

DESCRIPTION

This sophisticated unparalleled designed LED semi-flush mount is one of a kind masterpiece. From each viewable angle you will perceive a different architectural look, with three layers of eccentric arched metal bands combined together. Inside each band is our powerful 120V AC LED technology diffused by inner frosted acrylic curved diffusers, when lit the light illuminates elegantly throughout all the inner bands and into the surrounding area, 65W, Available in black, brushed nickel, walnut and white metal finishes.



KUZCO

19054 28TH AVENUE  
SURREY - BC V3Z 6M3  
CANADA

WWW.KUZCOLIGHTING.COM

COMMENT

