



# LBL-COB-384-24V-8MM

COB LED Strip 24V 3W/ft 16ft IP20

Project:

Location:

Cat # :

Qty:

Notes:

## DESCRIPTION

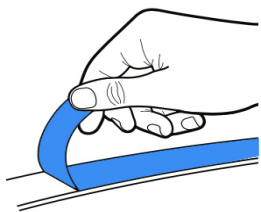
COB LED flexible strip 24V for dry locations  
Seamless linear light - no diffused cover needed  
No hotspots and with CRI 90+ for vibrant colors  
Higher efficiency and more flexible than SMD LED strips  
Easy to install and low maintenance  
Double sided adhesive 3M tape and wires on both ends

## APPLICATIONS

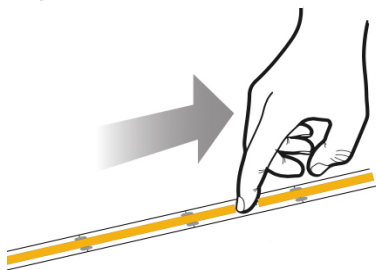
Cove and decorative lighting, path and contour marking  
Undercabinet and valance use

## INSTALLATION INSTRUCTIONS

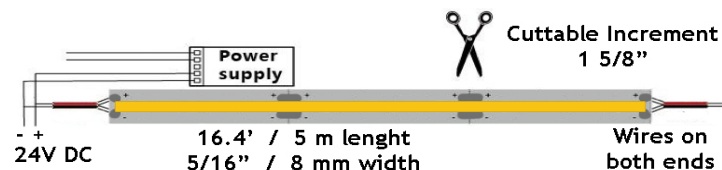
1. Remove backing paper to reveal adhesive tape



2. Press LED tape firmly onto clean smooth surface that adsorbs heat, such as metal or glass. Start at one end and gradually move along surface, making sure tape is smooth and not creased



3. Cut on trim marks



## WARNING

LED tape gets hot. Mounting firmly and securely on smooth and thermo conductive surface such as metal or glass is critical for proper thermal management and long life.  
Not following these instructions voids the warranty

## ORDERING GUIDE

2700K	LBL-COB-384-24V-8MM-27K
3000K	LBL-COB-384-24V-8MM-30K
4000K	LBL-COB-384-24V-8MM-40K
5000K	LBL-COB-384-24V-8MM-50K

## SPECIFICATION (tolerance +/- 10%)

Applications	Undercabinet, Cove, Valance, Decorative			
Color Temperature (K)	2700	3000	4000	5000
Power	3 W/ft			
Efficiency	100 lm/W			
Light output	300 lm/ft			
Length per roll	16.4 ft / 5 meters			
Maximum Length	16.4 ft / 5 meters			
Width	5/16" / 8 mm			
Power per Max Length	50 W			
Lumen per Max Length	5,000 lm			
Beam Angle	180°			
CRI	90 +			
Input	24V DC			
Dimmable	Yes			
LED Operation Type	Constant Voltage			
IP Grade	IP 20			
Approved Location	Indoor / Dry Location			
Ambient Temperature	-4°F (-20°C) to +104°F (+40°C)			
Cuttable Increment	1 5/8"			
Adhesive Tape Type	3M 300SE			
Projected Life	70% Light Output at 20,000 Hours			
Certification	cETLus			
Warranty	3 Year			

## ACCESSORIES

Sold Separately



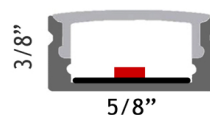
cULus Class 2 Drivers 60W, 96W, 192W, 288W  
120V-277V in, 24V DC out. 5-in-1 Dimmable  
Built-In Wiring Compartments. Wet location



cULus Class 2 Driver cat # **LBL-DC24V96W**  
120V in, 24V DC out, 96W. Triac / 0-10V Dimmable



Aluminum Channel  
With Diffused Cover  
3.3' cat # **XC610**



Strip Connector 8mm no wires cat # **LSC-0-8MM**



Single Connector with 6" wire cat # **LSC-1-8MM**



Two Connectors with 6" wire cat # **LSC-2-8MM**

Note: All 3 connectors fit inside the channel