

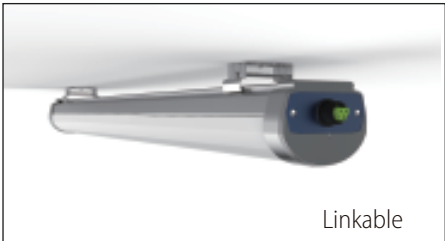
LED Linear Light SPEC (CO)



UP(Universal)
• Universal Application



150lm/W



Linkable



Easy installation



Water-proof door

LUXT2B

Universal LED
Linear Light



Matters needing attention

- Before installing the lighting fixtures, please read this instruction manual carefully.
- The lighting fixtures should be installed, connected and tested by a certified installer based on the local regulations.
- Lamps should always be installed or replaced with care.
- Please check the local voltage in accordance with the product requirements before using the product.
- Relamping only can be done when the power is off and the lamp is completely cooled down.
- When a lamp is to be cleaned, make the power off and let it cool down completely. Clean the fixture with a soft cloth and a standard PH neutral detergent. Stainless steel finishing should be maintained regularly.
- Misuse of, or changes to the fixture shall nullify the guarantee.
- Don't cover the fixtures with flammable materials.
- Exclusively replaced by the manufacturer or his service agent or the similar qualified person in order to avoid a hazard.

S/N Rules

S/N: A B C D E F X

1 2 3 4 5 6

E X : L U X T 2 B A C 2 0 6 5 1 1 0 3 0 0 0 0 X

1 2 3 4 5 6

- 1 Model
- 2 PC Lens : K=Frosted T=Clear
- 3 Power : 40=40W 50=50W 60=60W
- 4 Color Range : 30=WW(3000K) 40=NW(4000K) 50=DW(5000K)
60=CW(6500K)
- 5 Date : 11=2011 Year 03=March
- 6 Quantity : 00001-99999PCS

Temperature Characteristics T-ambient 25°

Temperature

- Operating -20~+40 °C
- Storage -40~+85 °C

Electrical Characteristics

Input Voltage:

- EU: AC220~240V 50/60Hz
- PF: ≥0.93 THD <20%
- Power Efficiency: ≥0.9

1. Features

- 7 kinds of installation can match different installation requirements
- Greatly reducing the costs of the installation
- Ideal for applications with fixture height between 3-8m
- Universal AC input 220-240VAC
- Ultra bright 150lm/w
- Unique light distribution design for comfortable optic performance
- Suspend and ceiling mounted for convenient installation and maintenance
- Adjustable installation Angle can change the direction of light
- Linkable
- Unique heatsink design for stable product performance
- Patented design + Brand driver+ Brand LED
- Product automatic protection (OVP OLP OTP OCP)
- Water proof IP65 rate

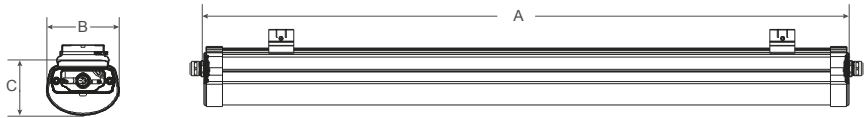
2.Application



- Office • Meeting room • Hotel • Hospital • Supermarkets • Shopping mall • Large retailers • Library • School
- Tunnel • Airports • Sports • Train stations • Bus stations • TheatresMTR stations
- Manufacture • Warehouses • ParkExhibition centers • Gas stations • Toll stations • Gymnasium

3.Product Dimension

Standard:



	Size A(mm)	Size B(mm)	Size C(mm)
Standard	600	109	84
	1200	109	84
	1500	109	84

■ Pls Note: This size only contains the size of the luminaire, connectors and accessories parts size is not included

4. Parameter

Model NO.	Power (W)	LED QTY (pcs)	Clearly Lumens	Cover Lm/W
LUXT2B 600mm(2FT)	40	240	5200	130
LUXT2B 1200mm(4FT)	60	432	7800	130
LUXT2B 1500mm(5FT)	80	520	10400	130

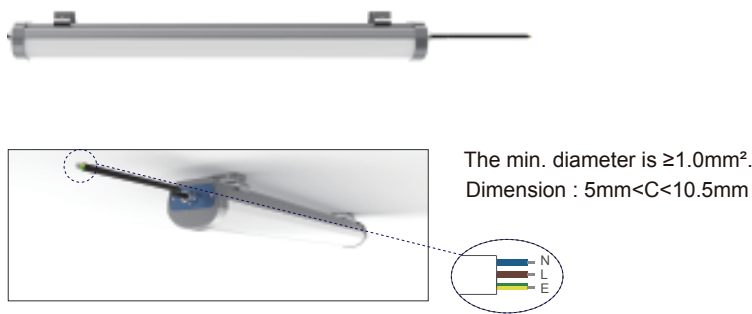
Frosted cover is 10Lm/W lower than clear cover
Above lumen based on 4000K Ra: 80

Light Source : 2835
CRI Range : 80 / 90 / 95
CCT Range : WW(3000K) NW(4000K) DW(5000K) CW(6500K)
AC Input : 220-240V
Beam Angle : 120°
Light Efficiency : 130Lm/W, 150Lm/W
Size : 109(W)*84(H)
Waterproof : IP65 & IK10
Recommended Installation Height : 3-8M

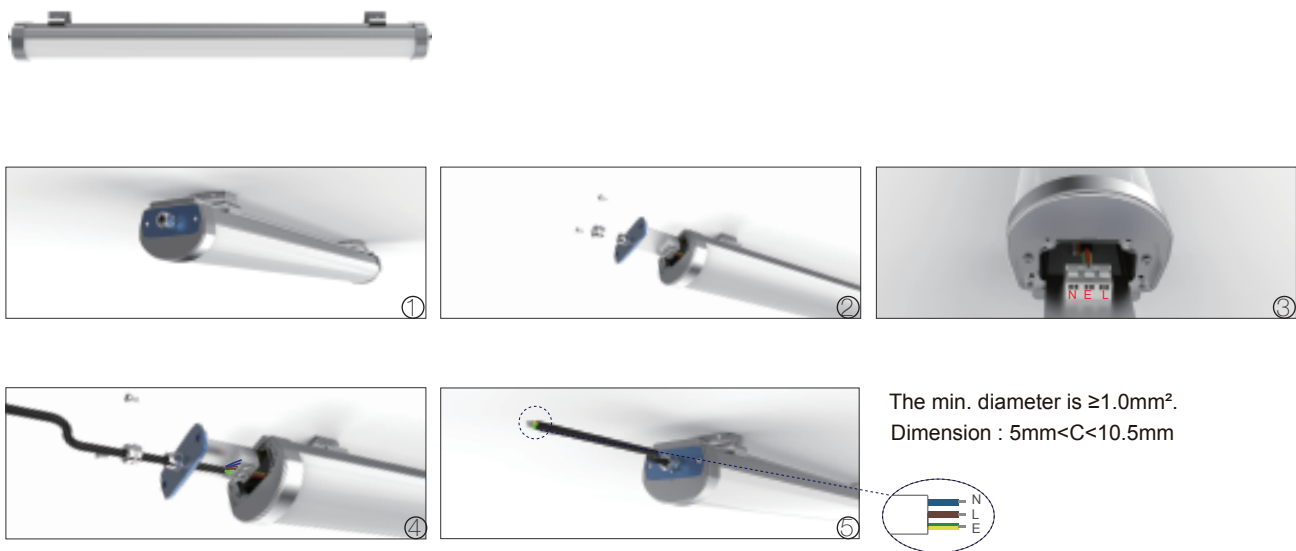
5.Installation

1. Products Installtion Map

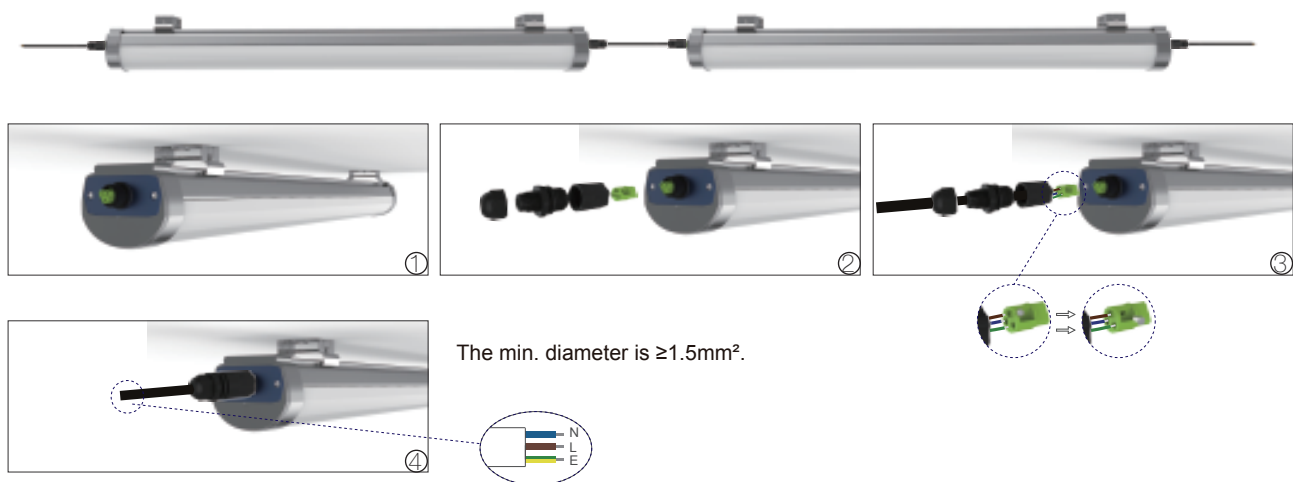
A.With cable



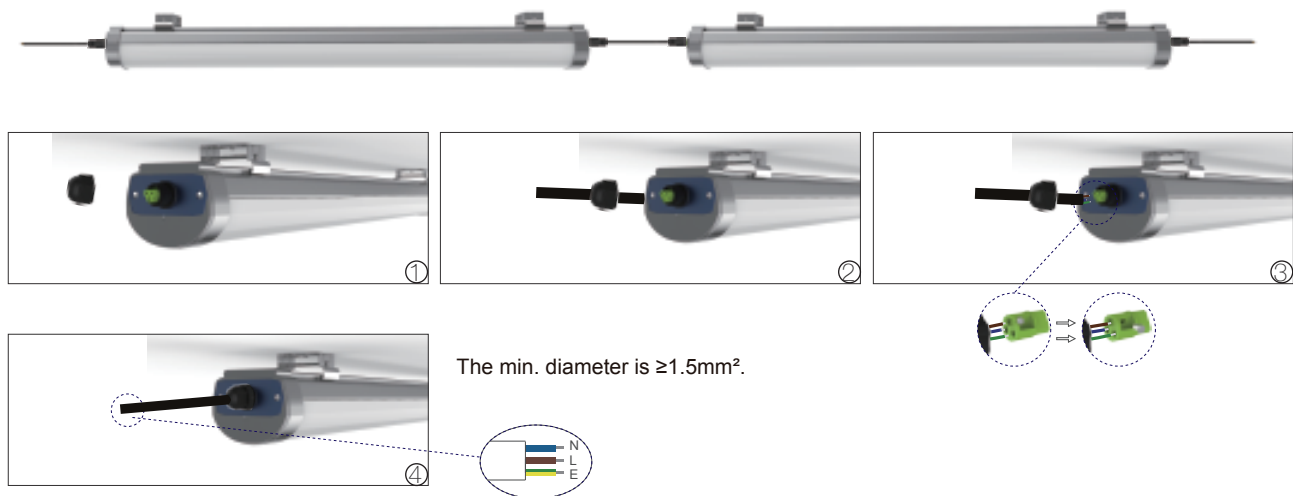
B.Without cable



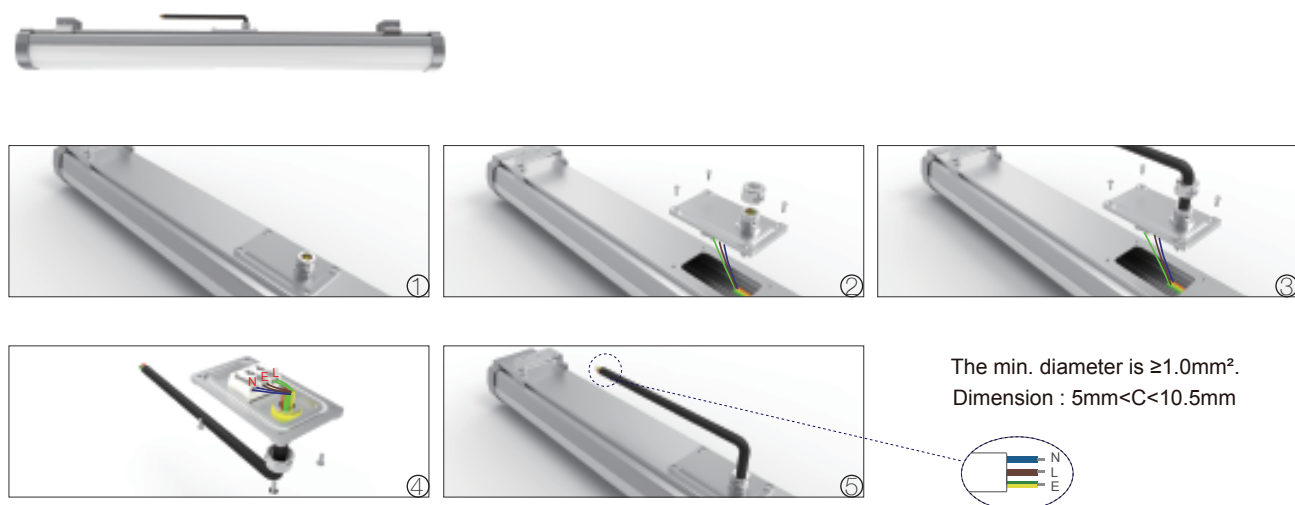
C.Linkable



D.Linkable without connector

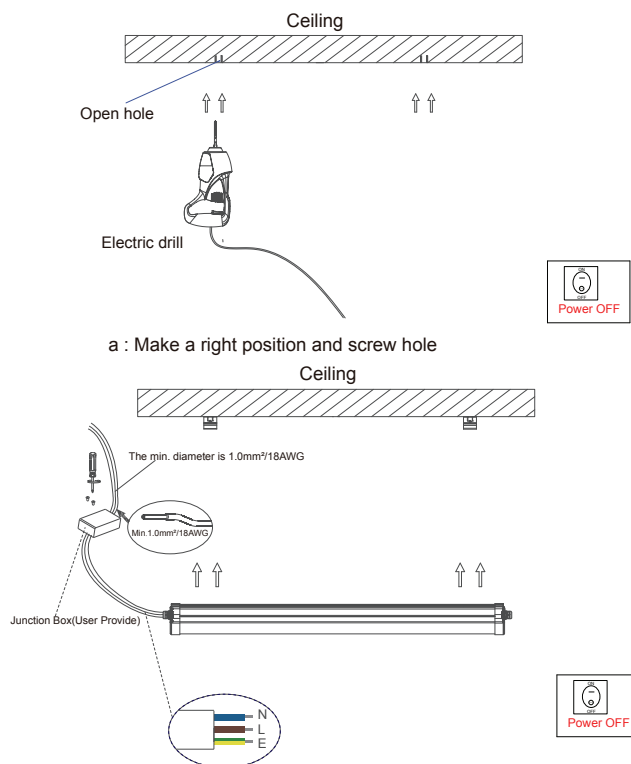


E.Cable from the back

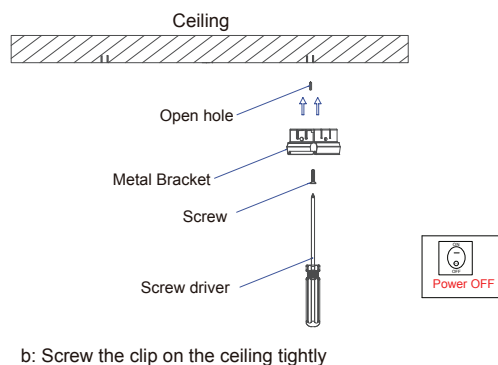


2. Installation

A.Ceiling Mounted



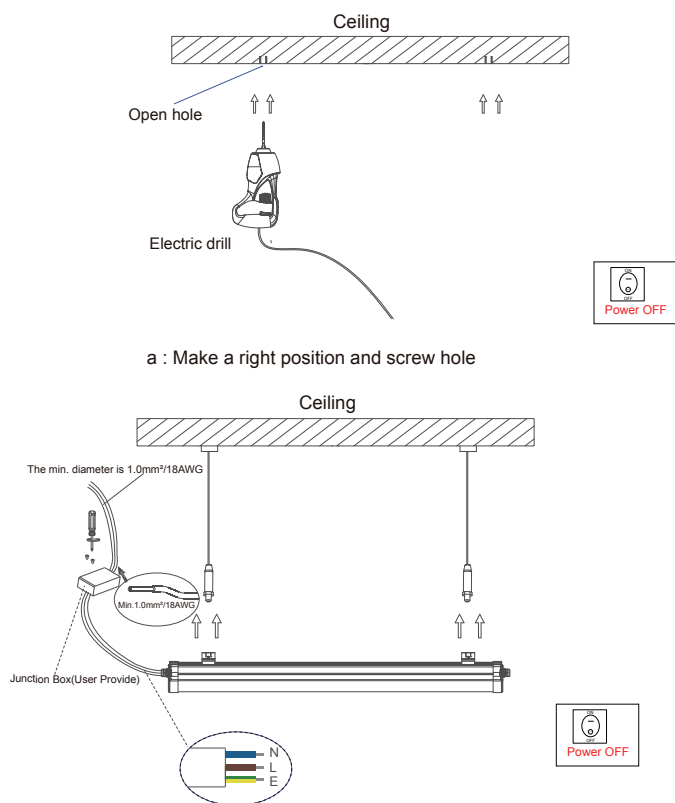
c. Connect the wire by junction box after power-off.



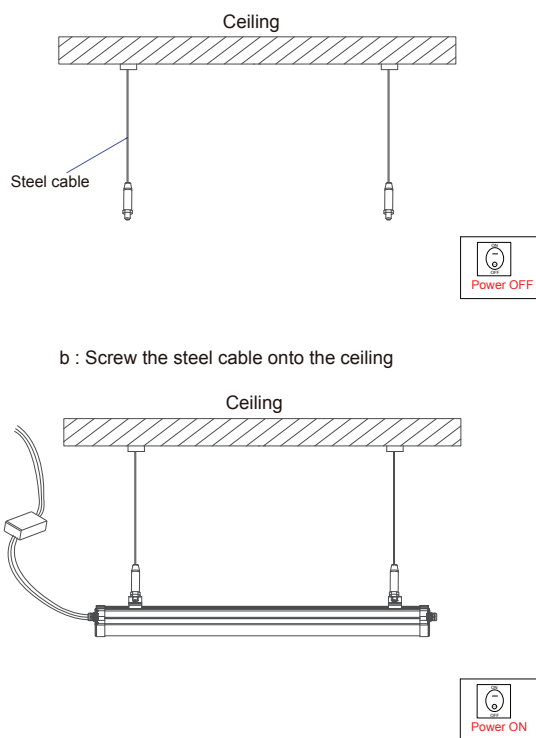
d. Adjust the position of the fixture and clean it.

■ Please Note: All the operations must be in the condition of power off

B.Suspending



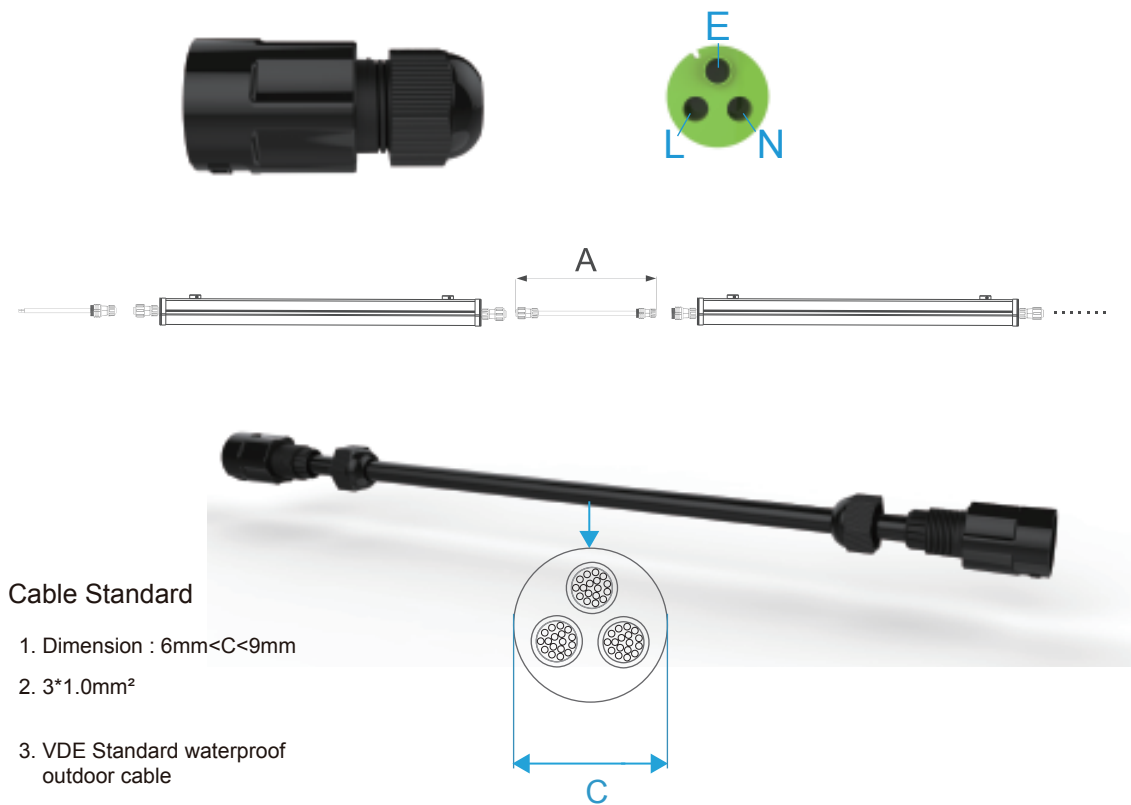
c. Connect the wire by junction box after power-off.



d. Adjust the position of the fixture and clean it.

■ Please Note: All the operations must be in the condition of power off

■ Specification



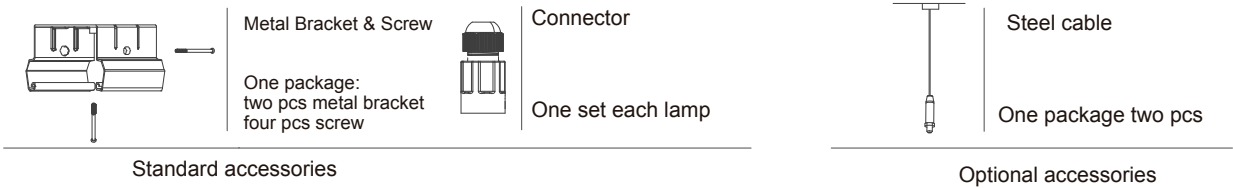
■ PLS Note : We just provide the waterproof connector, pls choose the right cable according to the cable specs .

■ How many LED fixtures we could connect on one phase.

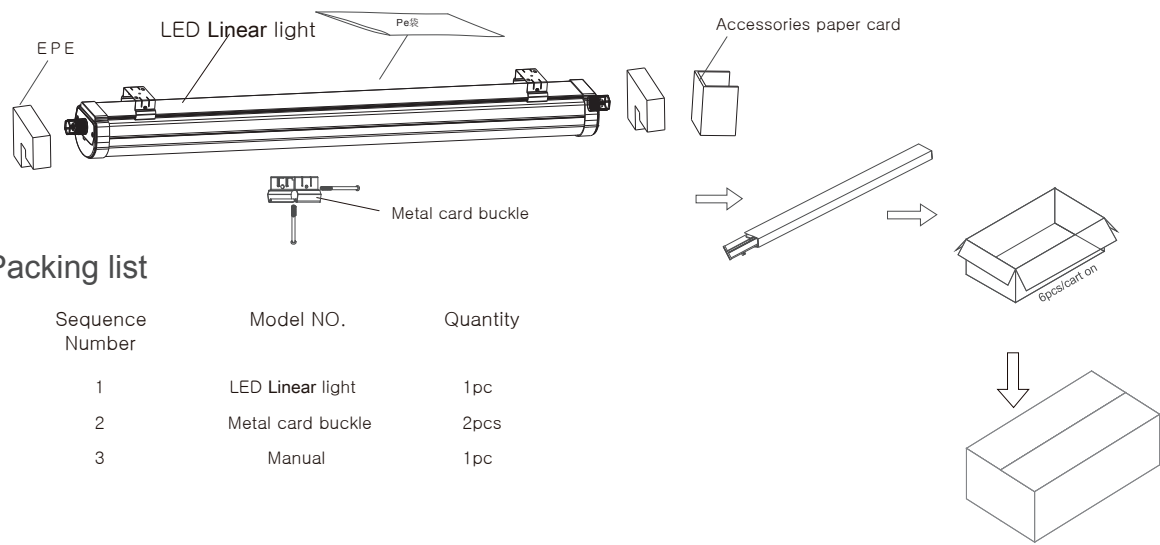
Input Voltage	Max Qty	Size A (mm)	Input Voltage	Max Qty	Size A (mm)
100VAC/40W	10	optional	230VAC/40W	18	optional
100VAC/50W	8	optional	230VAC/50W	15	optional
100VAC/60W	6	optional	230VAC/60W	12	optional
			230VAC/80W	9	optional



The luminaires are intended for indoor use or under shelter for outdoor use.



6.Packaging



A.Packing list

Sequence Number	Model NO.	Quantity
1	LED Linear light	1pc
2	Metal card buckle	2pcs
3	Manual	1pc

B.Packing Data

Model No	Single Box	Pcs/CTN	N.W./Panel (kg)	G.W./CTN (kg)	Meas (mm)
LUXT2B 600mm	1	6	1.76	12.86	752x395x210
LUXT2B 1200mm	1	6	2.76	20.24	1352x395x210
LUXT2B 1500mm	1	6	3.34	24.28	1652x395x210