



MPulse™



Installation Manual

MPulse Bollard Luminaire

REV: 12/03/19



BEFORE YOU BEGIN

Read these instructions completely and carefully.



WARNING

Risk of fire or electric shock. Luminaire wiring and electrical parts may be damaged when drilling for installation of led retrofit kit, check for enclosed wiring and components.

To prevent wiring damage or abrasion, do not expose wiring to edges of sheet metal or other sharp objects.

General Safety Information

- To reduce the risk of death, personal injury or property damage from fire, electric shock, falling parts, cuts/abrasions, and other hazards read all warnings and instructions included with and on the fixture box and all fixture labels.
- Before installing, servicing, or performing routine maintenance upon this equipment, follow these general precautions.
- Commercial installation, service and maintenance of luminaires should be performed by a qualified licensed electrician.
- DO NOT INSTALL DAMAGED PRODUCT!
- This fixture is intended to be connected to a properly installed and grounded UL listed junction box.

WARNING:

RISK OF ELECTRICAL SHOCK

- Turn off electrical power at fuse or circuit breaker box before wiring fixture to the power supply.
- Turn off the power when you perform any maintenance.
- Verify that supply voltage is correct by comparing it with the luminaire label information.
- Make all electrical and grounded connections in accordance with the National Electrical Code and any applicable local code requirements.
- All wiring connections should be capped with UL approved wire connectors.

CAUTION:

RISK OF INJURY

- Wear gloves and safety glasses at all times when removing luminaire from carton, installing, servicing or performing maintenance.
- Avoid direct eye exposure to the light source while it is on.
- Account for small parts and destroy packing material, as these may be hazardous to children.

CAUTION:

RISK OF FIRE

- Keep combustible and other materials that can burn away from luminaire and lamp/lens
- Do not mount to flammable or combustible surfaces.

Input Rating: 120V-277V 50/60Hz

Operating Temperature: -40°F to 122°F

Illustrations in the manual are for installation purposes only. It may not be identical to the fixture purchased.

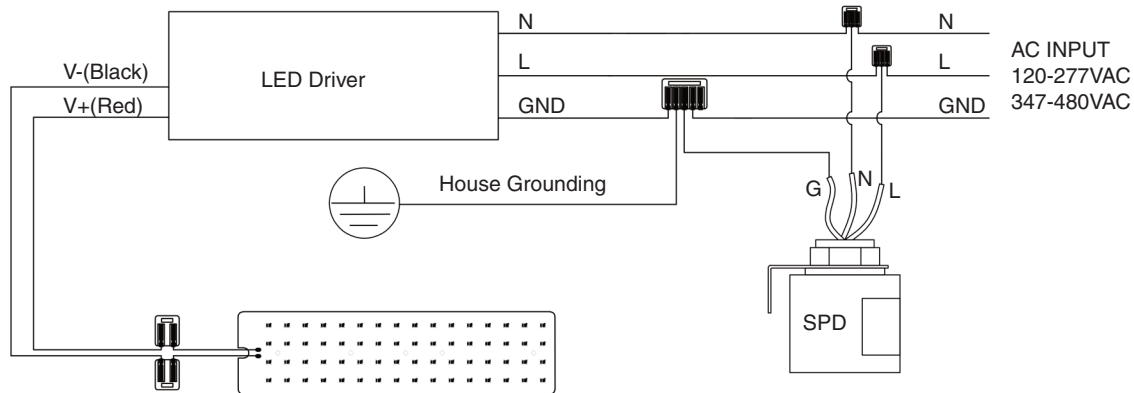
Models:

This instruction manual applies to the MP-BL Series

General Wiring Diagram:

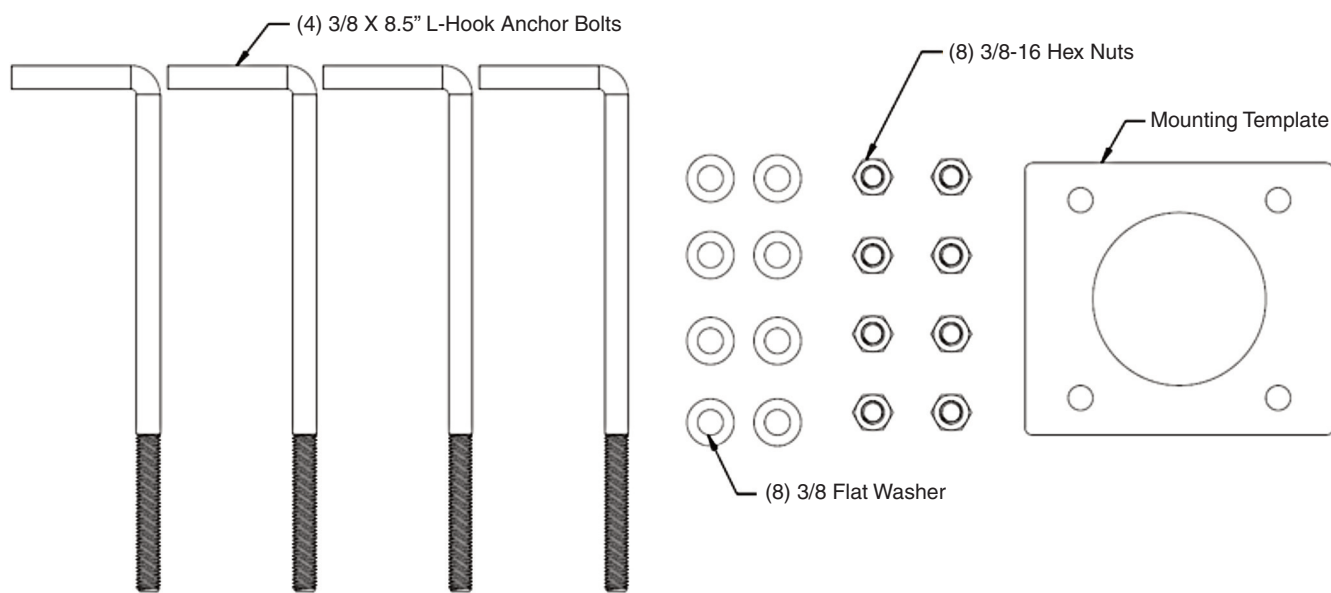
CAUTION: Turn off electrical power at fuse or circuit breaker box before wiring fixture to the power supply.

1.) Wiring for standard product with surge protector.



MPulse Bollard Mounting Kit Contents:

- (4) 3/8 X 8.5" L-Hook Anchor Bolts
- (8) 3/8 Flat Washers
- (8) 3/8-16 Hex Nuts
- (1) Mounting Template



- 1.) Secure the four (4) L-bolts to the mounting template using the eight (8) 3/8-16 nuts and eight (8) 3/8 flat washers (refer to **Fig. 1**).

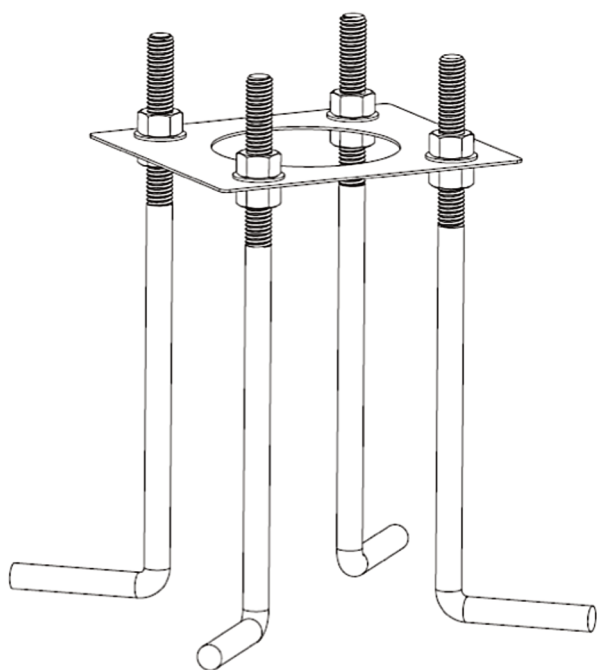


Fig. 1

MPulse Bollard:

- 2.) Ensure that there is 1.5" of threaded bolt extending out of the top side of the template (refer to **Fig. 2**).
- 3.) The shorter side of the four (4) L-bolts should be positioned 45° from the horizontal and vertical axis (refer to **Fig. 3**).

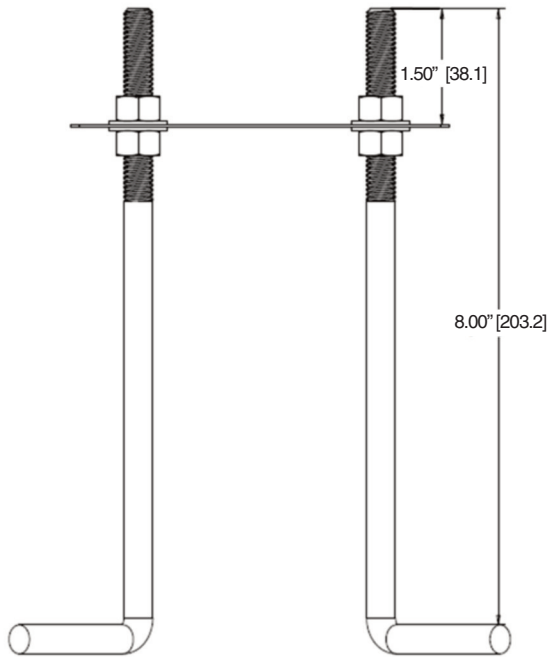


Fig. 2

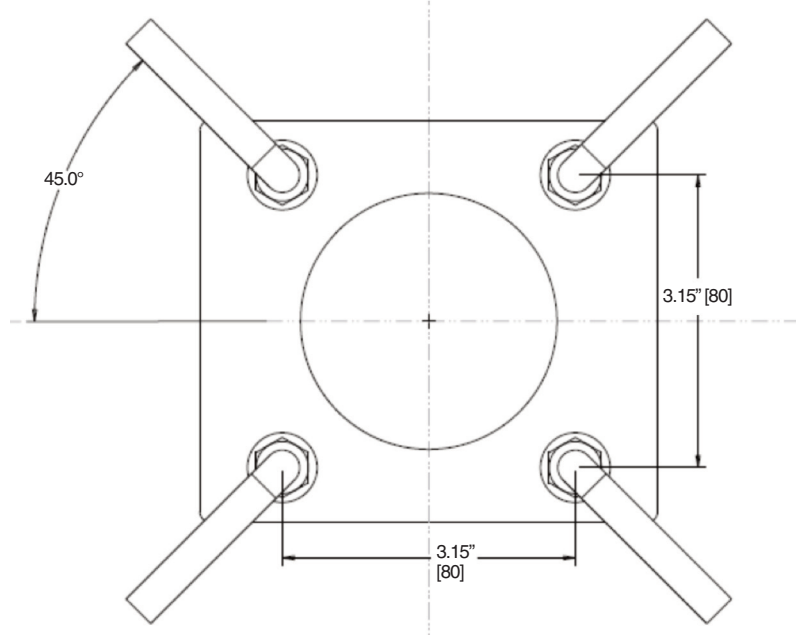
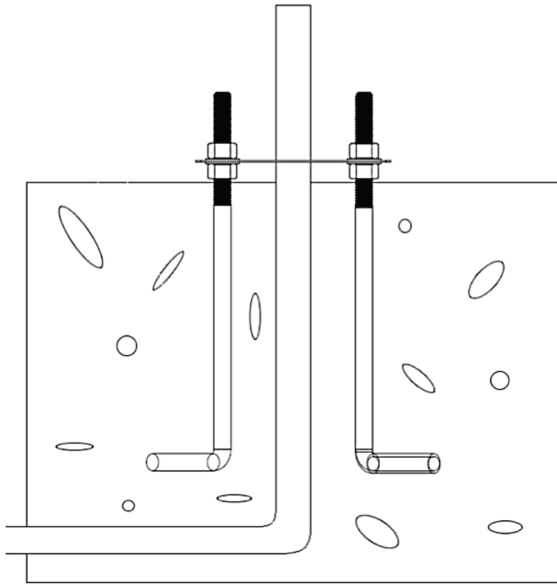
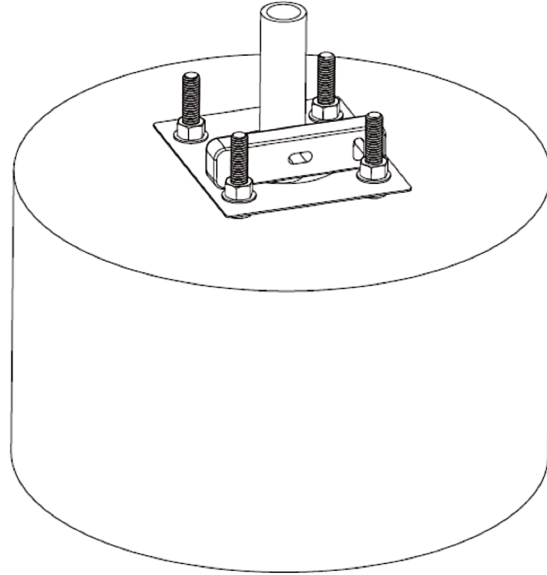


Fig. 3

MPulse Bollard:

- 4.) Sink the L-bolts into the wet cement. Ensure that there is space between the nuts on the bottom side of the template and the wet cement (refer to **Fig. 4**).
- 5.) Adjust the four (4) nuts on the bottom side of the template as needed until the template is level (refer to **Fig. 5**).

**Fig. 4****Fig. 5**

MPulse Bollard:

- 6.) Remove the template and replace it with the mounting bracket (refer to **Fig. 6**). Make sure that the bracket is oriented in the desired position. The flat surfaces will align with the flanges. The curved surfaces will align with the sides without the flanges.
- 7.) Once the cement is dry, lay the fixture flat on a soft surface to prevent scratching or damaging. Connect the driver input leads coming out of the bottom of the fixture to the power supply leads from the conduit in the ground (refer to **Fig. 7**).
- 8.) Place the shaft of the fixture onto the cement, aligning the holes of the mounting bracket with the holes in the shaft. Secure it to the bracket with the four (4) M6 bolts (refer to **Fig. 8**).

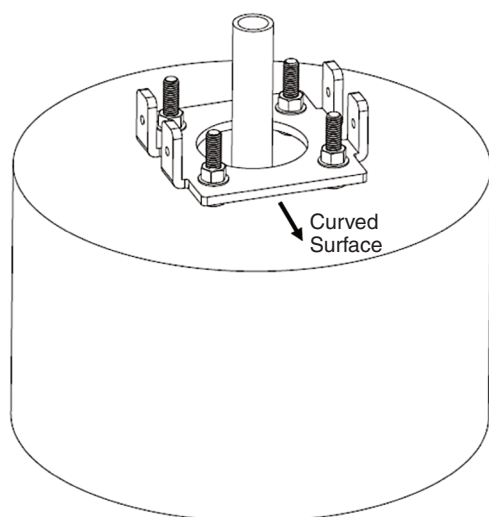


Fig. 6

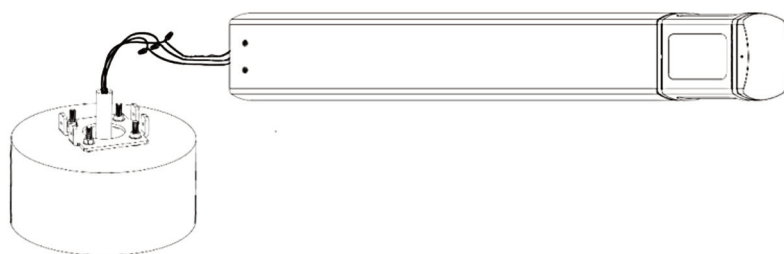


Fig. 7

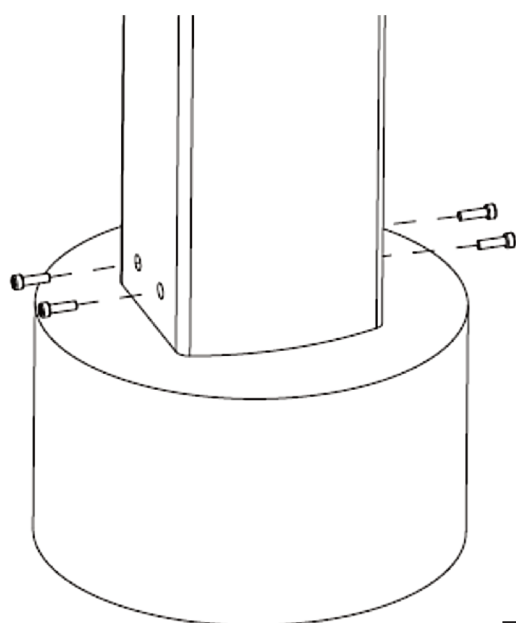


Fig. 8

MPulse Bollard: Optional Glare Shield Installation Instructions

Note: An M4x15mm pan head machine screw is required for installation, not included.

- 1.) On the flat side of the fixture that will be shielded, remove the M4 set screw at the top of the fixture (see **Fig. 1**).
- 2.) Put the shield in place over the flat opening. Ensure that the bent flange at the bottom is wedged in between the diffuser and outer die-cast cutout holding it in place (see **Fig. 2**).
- 3.) Secure the shield in place using the M4 pan head screw where the set screw was removed in step 1 (see **Fig. 3**).

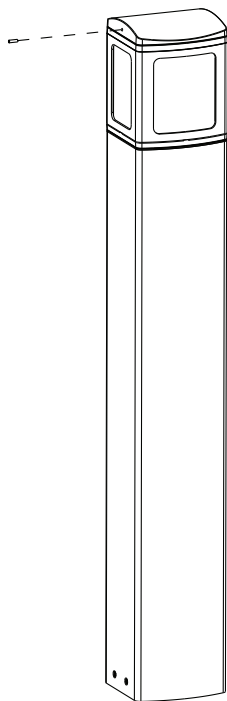


Fig. 1

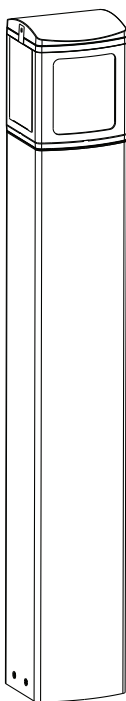


Fig. 2

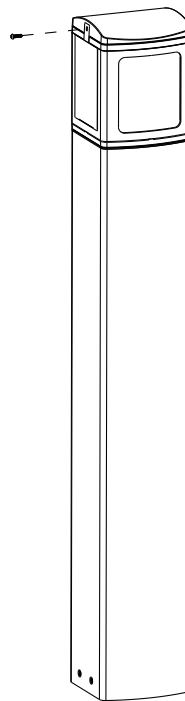


Fig. 3

Warranty Information

MaxLite Inc. warrants its products for a minimum period of **TEN (10)** years from the date of original purchase from MaxLite or its authorized distributor/dealer (the “Warranty Period”), as follows: If a Product fails to operate during the Warranty Period as a result of defects in materials or workmanship, MaxLite will, at its option, repair it, replace it with the same or like Product.

Please refer to Maxlite’s website (at <http://maxlite.com/resources/warranties>) for the complete terms and conditions of our warranty.

Limitation of Liability

THE FOREGOING WARRANTY IS EXCLUSIVE, AND IS THE SOLE REMEDY FOR ANY AND ALL CLAIMS, WHETHER IN CONTRACT, IN TORT OR OTHERWISE ARISING FROM THE FAILURE OF PRODUCT AND IS IN LIEU OF ALL OTHER WARRANTIES, EXPRESS OR IMPLIED, INCLUDING ALL WARRANTIES OF MERCHANTABILITY OR FITNESS FOR A PARTICULAR PURPOSE, WHICH WARRANTIES ARE HEREBY EXPRESSLY DISCLAIMED TO THE EXTENT PERMITTED BY LAW AND, IN ANY EVENT, SHALL BE LIMITED TO THE WARRANTY PERIOD SPECIFIED ABOVE. THE LIABILITY OF MAXLITE SHALL BE LIMITED TO THE TERMS OF THE EXPRESS WARRANTY SET FORTH HEREIN. IN NO EVENT WILL MAXLITE BE LIABLE FOR ANY SPECIAL, INCIDENTAL OR CONSEQUENTIAL DAMAGES INCLUDING, WITHOUT LIMITATION, DAMAGES RESULTING FROM LOSS OF USE, PROFITS, BUSINESS OR GOODWILL, LABOR COSTS, REMOVAL OR INSTALLATION COSTS, DECREASE IN THE LIGHT OUTPUT OF THE LAMP, AND/OR DETERIORATION IN THE LAMP’S PERFORMANCE, WHETHER OR NOT MAXLITE HAS BEEN ADVISED OF THE POSSIBILITY THEREOF. UNDER NO CIRCUMSTANCES SHALL MAXLITE’S ENTIRE LIABILITY FOR A DEFECTIVE PRODUCT EXCEED THE PURCHASE PRICE OF THAT PRODUCT. WARRANTY SERVICES PROVIDED UNDER THESE TERMS AND CONDITIONS DO NOT ENSURE THE UNINTERRUPTED OPERATION OF PRODUCTS; MAXLITE SHALL NOT BE LIABLE FOR DAMAGES CAUSED BY ANY DELAYS INVOLVING WARRANTY SERVICE.

This Limited Warranty gives you specific legal rights and you may also have other rights that may vary from state to state. Because some states or jurisdictions do not allow the exclusion or limitation of liability for consequential or incidental damages, this limitation may not apply to you.

