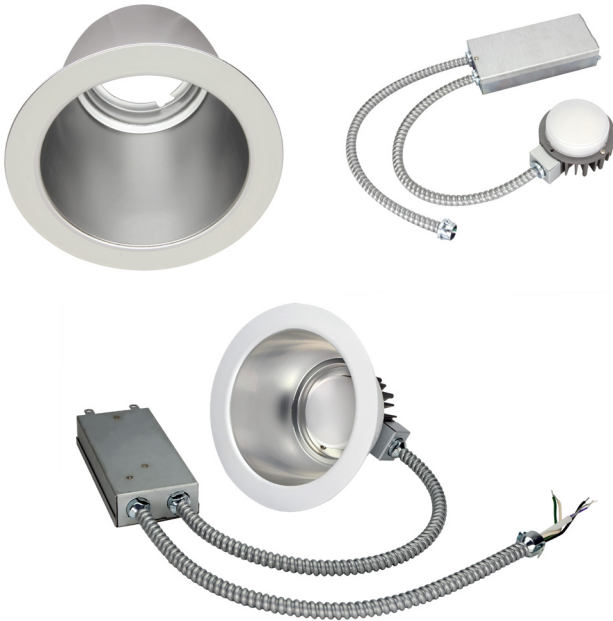


LED 15W COMMERCIAL RECESSED RETROFIT DOWNLIGHT RRC SERIES



PRODUCT DESCRIPTION:

The RRC family of LED Downlight retrofits is a highly efficient option for upgrading existing Incandescent, Fluorescent and Metal Halide downlight fixtures to energy saving LED. The highly efficient design allows users to capture energy savings while also gaining the benefit of dimming. Compatible with many architectural and commercial downlight housings this retrofit can be used in most downlight applications. Suitable for Damp locations.

FEATURES:

- Mounts into existing recessed frame
- Supplied with optional retaining clips if existing frame does not have adequate friction springs to secure reflector.
- cULus listed for damp location use
- Universal voltage (120-277) (Triac 120V only)
- 0-10V dimming and Triac dimming drivers available
- CRI: >80
- A wide variety of CCTs available
- 10 year warranty
- Integrated EM option available
- Type IC

CONSTRUCTION:

- Anodized aluminum reflector with a white trim ordered separately
- External driver for easy retrofit and maintenance

WARRANTY:

10-year standard warranty with labor allowance* (further details available at www.maxlite.com/warranties)
*Warranty Limitations: Product must be rated for the application per the Product Data Sheet (PDS); operated ≤ 16 hrs; in ambient of -29°F to 104°F.

*Up to \$25/unit; labor allowances of up to \$500/unit available for purchase – contact MaxLite representative for details.

HOW TO ORDER:

1. Choose the light engine for desired CCT and dimming requirements.
2. Ensure that the light engines you have selected is compatible with the reflector size required by your project.

| MODEL SELECTION (Full list of order codes on pg. 2) | | | Typical order example: RRXC15U30Z + RRC4-RFL | | |
|---|------------------|---|--|--|---|
| RRXC | 15 | U | | | |
| FAMILY | LUMENS (NOMINAL) | VOLTAGE | CCT** | DIMMING TYPE | EM OPTION |
| RRXC= Commercial Recessed Retrofit Downlight | 15= 1350 lm @14W | U= 120V (Triac Dimming) 120-277V (0-10V Dimming) | 30= 3000K 35= 3500K 40= 4000K | (OMIT)= Triac Dimming Z = 0-10V Dimming | (OMIT) = None EM = Integrated EM Option w/ 0-10V dimming |

*Additional wattages available. Please contact your MaxLite representative for more information on the entire RRC Series.

*EM option not Energy Star qualified

** 2700K and 5000K only made to order

SPECIFICATIONS:

| | | ENGINE | RRXC15U40Z | RRXC15U40Z | RRXC15U40Z | RRXC15U40Z |
|---------------------|-----------------------|--|------------|------------|------------|------------|
| | | REFLECTOR | RRC4-RFL | RRC6-RFL | RRC8-RFL | RRC9-RFL |
| ITEM | SPECIFICATION | DETAILS | | | | |
| GENERAL PERFORMANCE | Power Consumption (W) | 13.3 W | 13.3 W | 13.3 W | 13.3 W | 13.3 W |
| | Lumens Delivered (lm) | 1,184 lm | 1,239 lm | 1,221 lm | 1,322 lm | 1,322 lm |
| | Efficacy (lm/W) | 89 lm/W | 93 lm/W | 92 lm/W | 99 lm/W | 99 lm/W |
| | Color Temperature | 3000K, 3500K, 4000K | | | | |
| | L70 Lifetime (hours) | 50,000 | | | | |
| | Color Consistency | Proprietary binning for uniform color, SDCM <4 | | | | |
| | CRI | >80 | | | | |
| ELECTRICAL | Power Factor | ≥0.9 | | | | |
| | Input Voltage | 120-277V (Triac 120V only) | | | | |
| | Compatible Dimmers | Compatible with 0-10V dimmers. For Triac dimming option, see list of compatible dimmers below. | | | | |
| PHYSICAL | Weight | 2 lbs | | | | |
| | Mounting | Mounts into existing recessed frame | | | | |
| | Operating Temperature | 0° – 104° F | | | | |
| | Humidity | 20% - 85% RH, non-condensing | | | | |
| CERTIFICATION | Certification | cULs Classified, FCC, Energy Star, TAA Compliant | | | | |
| | Material Usage | RoHS compliant; no mercury | | | | |
| | Environment | Indoor Damp/ Type IC | | | | |
| | Warranty | 10 year warranty* | | | | |

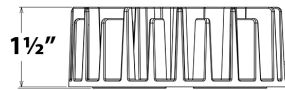
* CAUTION: A light engine should only be used with a reflector that is listed as compatible. Any other engine/reflector pairing is not covered by this product's UL Listing, and could be hazardous!

*Calculated data for 4000K light engines

ENGINE ORDERING:

| ORDER CODE | MODEL | CCT | DIMMING |
|------------|--------------|-------|---------|
| 1410054 | RRXC15U30 | 3000K | Triac |
| 14099679 | RRXC15U35 | 3500K | |
| 1410057 | RRXC15U40 | 4000K | |
| 1410055 | RRXC15U30Z | 3000K | 0-10V |
| 100353 | RRXC15U35Z | 3500K | |
| 1410058 | RRXC15U40Z | 4000K | |
| 1410056 | RRXC15U30ZEM | 3000K | |
| 14099674 | RRXC15U35ZEM | 3500K | |
| 1410059 | RRXC15U40ZEM | 4000K | |

REFLECTOR ORDERING:



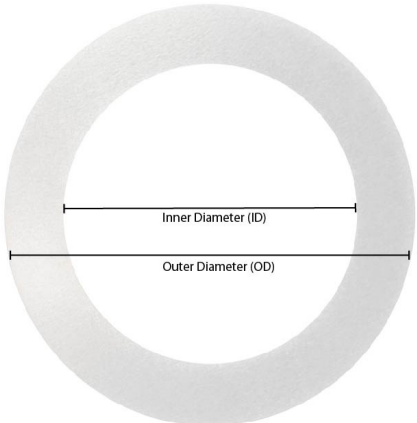

Heatsink adds 1 1/2" to overall height

| ORDER CODE | REFLECTOR MODEL NUMBER | REFLECTOR SIZE | |
|------------|------------------------|----------------|--|
| 1410090 | RRC4-RFL | 4" | |
| 1410091 | RRC6-RFL | 6" | |
| 1410092 | RRC8-RFL | 8" | |
| 1410093 | RRC9-RFL | 9" | |

COMPATIBLE TRIAC DIMMERS:

| MFG. | MODEL NUMBER |
|--------|--------------|
| Lutron | DVA DVELV |
| Lutron | LGCL-153P |
| Lutron | S-600P |
| Lutron | DVCL-253P |
| Lutron | DV-600P |
| Lutron | SCL-153P |
| Lutron | SELV-300P |
| Lutron | IPL06 |
| Lutron | 6673-P |

ACCESSORIES:

| ORDER CODE | MODEL | DESCRIPTION | PRODUCT IMAGE |
|------------|-----------|--|--|
| 14099683 | RR-XRING4 | 4" Trim Extender ID:4.8", OD: 6.7" |  |
| 14099684 | RR-XRING6 | 6" Trim Extender ID:6.24", OD: 8.75" | |
| 14099685 | RR-XRING8 | 8" Trim Extender ID:7.84", OD: 10.40" | |
| 14099686 | RR-XRING9 | 9" Trim Extender ID:9.50", OD: 11.90" | |
| 14098874 | RCF-4 | 4" Commercial Recessed Frame |  |
| 14098875 | RCF-6 | 6" Commercial Recessed Frame | |
| 14098876 | RCF-8 | 8" Commercial Recessed Frame | |