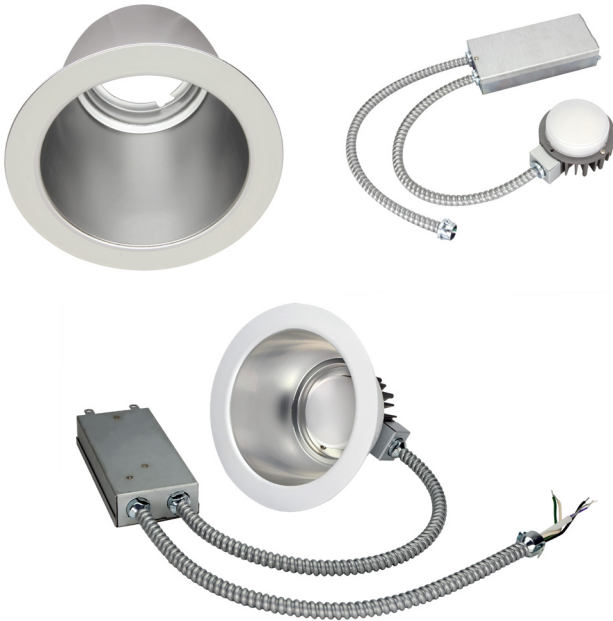


## LED 30W COMMERCIAL RECESSED RETROFIT DOWNLIGHT RRC SERIES



### PRODUCT DESCRIPTION:

The RRC family of LED Downlight retrofits is a highly efficient option for upgrading existing Incandescent, Fluorescent and Metal Halide downlight fixtures to energy saving LED. The highly efficient design allows users to capture energy savings while also gaining the benefit of dimming. Compatible with many architectural and commercial downlight housings this retrofit can be used in most downlight applications. Suitable for Damp locations.

### FEATURES:

- Mounts into existing recessed frame
- Supplied with optional retaining clips if existing frame does not have adequate friction springs to secure reflector.
- cULus listed for damp location use
- Universal voltage (120-277)
- 0-10V dimming drivers available
- CRI: >80
- A wide variety of CCTs available
- 10 year warranty
- Integrated EM option available
- Type IC

### CONSTRUCTION:

- Anodized aluminum reflector with a white trim ordered separately
- External driver for easy retrofit and maintenance

### WARRANTY:

10-year standard warranty with labor allowance\* (further details available at [www.maxlite.com/warranties](http://www.maxlite.com/warranties))  
\*Warranty Limitations: Product must be rated for the application per the Product Data Sheet (PDS); operated ≤16 hrs; in ambient of -29°F to 104°F.

\*Up to \$25/unit; labor allowances of up to \$500/unit available for purchase – contact MaxLite representative for details.

### HOW TO ORDER:

1. Choose the light engine for desired CCT and dimming requirements.
2. Ensure that the light engines you have selected is compatible with the reflector size required by your project.

MODEL SELECTION (Full list of order codes on pg. 2)			Typical order example: RRC30U30Z + RRC8-RFL		
RRXC	30	U		Z	
FAMILY	LUMENS (NOMINAL)	VOLTAGE	CCT**	DIMMING TYPE	EM OPTION
RRXC= Commercial Recessed Retrofit Downlight	30= 3200 lm @29W	U= Universal (120-277V)	30= 3000K 35= 3500K 40= 4000K	Z= 0-10V Dimming	(OMIT) = None EM = Integrated EM Option w/ 0-10V dimming

\*Additional wattages available. Please contact your MaxLite representative for more information on the entire RRC Series.

\*\* 2700K and 5000K only made to order

### SPECIFICATIONS:

		ENGINE	RRXC30U40Z	RRXC30U40Z
		REFLECTOR	RRC8-RFL	RRC9-RFL
ITEM	SPECIFICATION	DETAILS		
GENERAL PERFORMANCE	Power Consumption (W)	29.0W		29.0 W
	Lumens Delivered (lm)	3,075 lm		3,100 lm
	Efficacy (lm/W)	106 lm/W		107 lm/W
	Color Temperature	3000K, 4000K, 5000K		
	L70 Lifetime (hours)	50,000		
	Color Consistency	Proprietary binning for uniform color, SDCM <4		
	CRI	>80		
ELECTRICAL	Power Factor	≥0.9		
	Input Voltage	120-277V		
	Compatible Dimmers	Compatible with 0-10V dimmers.		
PHYSICAL	Weight	2 lbs		
	Mounting	Mounts into existing recessed frame		
	Operating Temperature	0° – 104° F		
	Humidity	20% - 85% RH, non-condensing		
CERTIFICATION	Certification	cULs Classified, FCC, Energy Star, TAA Compliant		
	Material Usage	RoHS compliant; no mercury		
	Environment	Indoor Damp / Type IC		
	Warranty	10 year warranty*		

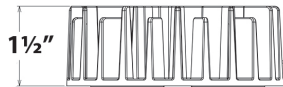
\* CAUTION: A light engine should only be used with a reflector that is listed as compatible. Any other engine/reflector pairing is not covered by this product's UL Listing, and could be hazardous!

\* Calculated data for 4000K light engines

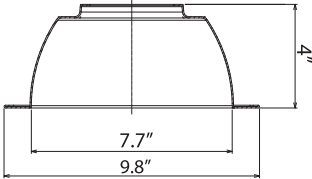
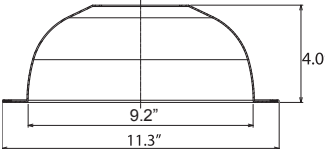
### ENGINE ORDERING:

ORDER CODE	MODEL	DESCRIPTION	CCT	DIMMING
1410100	RRXC30U30Z	RRC LIGHT ENGINE 3000LM 120-277V 3000K, 0-10 DIMMING	3000K	0-10V
1410101	RRXC30U30ZEM	RRC LIGHT ENGINE 3000LM 120-277V 3000K, 0-10 DIMMING W/ BATTERY BACKUP	3000K	
100369	RRXC30U35Z	RRC LIGHT ENGINE 3500LM 120-277V 2700K, 0-10 DIMMING	3500K	
14099676	RRXC30U35ZEM	RRC LIGHT ENGINE 2700LM 120-277V 2700K, 0-10 DIMMING W/ BATTERY BACKUP	2700K	
1410103	RRXC30U40Z	RRC LIGHT ENGINE 3000LM 120-277V 4000K, 0-10V DIMMING	4000K	
1410104	RRXC30U40ZEM	RRC LIGHT ENGINE 3000LM 120-277V 4000K, 0-10V DIMMING W/ BATTERY BACKUP	4000K	
1410106	RRXC50U50Z	RRC LIGHT ENGINE 3000LM 120-277V 5000K, 0-10V DIMMING	5000K	
1410107	RRXC30U50ZEM	RRC LIGHT ENGINE 3000LM 120-277V 5000K, 0-10V DIMMING W/ BATTERY BACKUP	5000K	

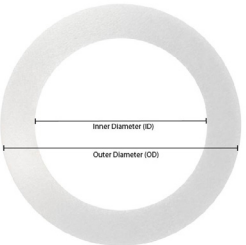

**REFLECTOR ORDERING:**



Heatsink adds 1 1/2" to overall height

ORDER CODE	REFLECTOR MODEL NUMBER	REFLECTOR SIZE	
1410092	RRC8-RFL	8"	
1410093	RRC9-RFL	9"	

**ACCESSORIES:**

ORDER CODE	MODEL	DESCRIPTION	PRODUCT IMAGE
14099685	RR-XRING8	8" Trim Extender ID: 7.84", OD: 10.40"	
14099686	RR-XRING9	9" Trim Extender ID: 9.50", OD: 11.90"	
14098874	RCF-4	4" Commercial Recessed Frame	
14098875	RCF-6	6" Commercial Recessed Frame	
14098876	RCF-8	8" Commercial Recessed Frame	