

NEFLINTW-R4MPW

4" E-Series FLIN Round LED Downlight with Selectable CCT

Source: 10.5W

Up to 950lm

Type

Project

Catalog No.

Notes

PRODUCT DESCRIPTION

E-Series FLIN is a thin recessed LED designed for easy installation into new construction or remodel applications. Luminaires include a selectable color temperature switch located on the junction box of each luminaire with a quick connect that allows for easy disconnect and mounting in the ceiling.

FEATURES

- No housing required and includes junction box with class 2 driver
- Quick installation and cost savings
- Junction box includes kelvin temperature switch
- IC Air-Tight rated
- Field selectable color temperature
- Triac or ELV dimming
- cETLus Listed for Wet Locations
- 5-year limited warranty

SPECIFICATION

Construction: Die-cast aluminum luminaire with spring clips for easy installation. Gasket included for air-tight and wet location listing without additional caulking.

Air Flow Restriction: Luminaire has factory installed gasket to restrict airflow from room into ceiling plenum to <2CFM (cubic feet per minute) in accordance with ASTM E283 Air-Tight requirements.

Lens: Regressed lens with sharp baffle cuts reduces aperture brightness. Special polymer lens produces more usable light and lumens per watt.

Junction Box: Prewired junction box includes quick connect to LED fixtures for ease of installation. Junction box includes two 1/2" trade size and two 3/8" trade size knockouts and snap on cover. Maximum of 4 No. 12 AWG through branch circuit conductor suitable for 90°C permitted in box. [Fixture wire length: 5" and Junction box wire length: 9"]

Mounting: No housing is required, two tensions steel spring clips secure luminaires to the ceiling. Luminaires accept ceiling thicknesses from 3/8" to 5/8". New construction frame-in kits are available, see accessories.

Minimum clearance: "IC" Insulated ceiling housings are direct contact rated; no minimum clearance is required.

ELECTRICAL

Voltage: 120VAC or 120-277VAC

Lumens / Wattage: Up to 950lm / 10.5W

Color Temperature: Selectable CCT (2700K / 3000K / 3500K / 4000K / 5000K)

Color Rendering Index: 90+ CRI

Beam Spread: 115° Wide Flood

Operating Temperature: 0°C to 35°C

Lifetime: 50,000 hours @ L70

Dimming: Dimmable down to 10% with Triac or ELV dimmer [Click Here](#) or check complete dimmer list at www.NoraLighting.com in the "Compatibility" page under "Resources" tab

OPTIONAL ACCESSORIES

NEFLINTW-4OR-MPW: Oversize Ring

NEFLINTW-EW-4: 4' Quick Connect Linkable Cable

NEFLINTW-EW-20: 20' Quick Connect Linkable Cable

NF-R246: Universal New Construction Frame-In

NFC-R430: New Construction Frame-In with Collar

LABELS AND LISTINGS

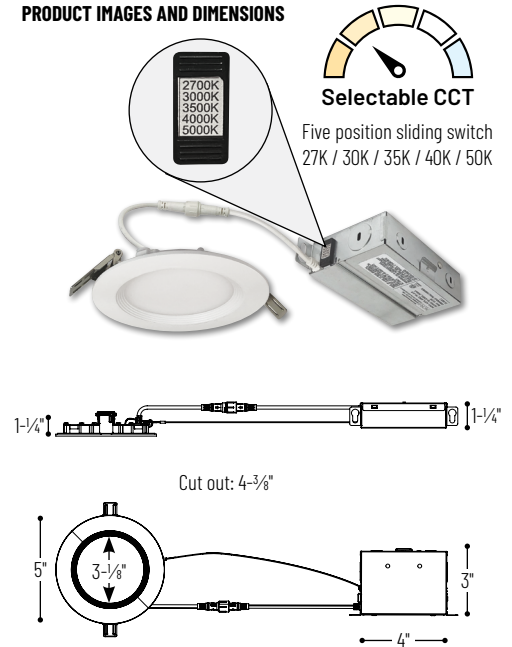
- cETLus Listed for Wet location
- ENERGY STAR certified
- Certified to the high efficacy requirements of California Title 24 JA8-2022
- [5-Year Limited Warranty](#)
- FCC Compliant



Performance Data

Part Number	Lumens	CCT
NEFLINTW-R4MPW	861lm	2700K
NEFLINTW-R4MPW	894lm	3000K
NEFLINTW-R4MPW	943lm	3500K
NEFLINTW-R4MPW	964lm	4000K
NEFLINTW-R4MPW	966lm	5000K

PRODUCT IMAGES AND DIMENSIONS



4" E-Series FLIN LED Round Downlight with Selectable CCT

Input Voltage

NEFLINTW-R4MPW = 120V input

NEFLINTW-R4MPWLE4 = 120-277V input

Optional Accessories

Description

NEFLINTW-4OR-MPW = Oversize Ring

NEFLINTW-EW-4 = 4' Quick Connect Extension Cable

NEFLINTW-EW-20 = 20' Quick Connect Extension Cable

NF-R246 = Universal New Construction Frame-In

NFC-R430 = New Construction Frame-In with Collar

Example: NEFLINTW-R4MPW = 4" Round E-Series FLIN LED Downlight, Selectable CCT (2700K / 3000K / 3500K / 4000K / 5000K), Matte Powder White finish, 120V input

NEFLINTW-R4
4" Round E-Series FLIN LED Downlight Accessories

Type

Project

Catalog No.

Notes



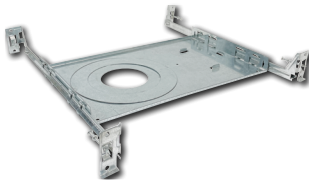
Oversize Ring for Round

NEFLINTW-40R-MPW
Oversize ring covers ceiling cut-outs up to 5-1/4"

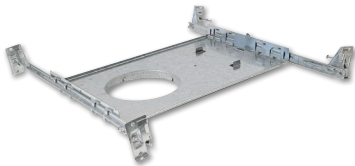


Quick Connect Extension Cables

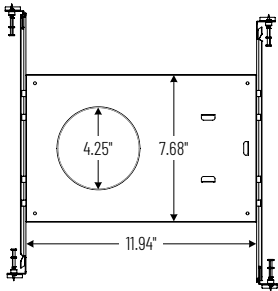
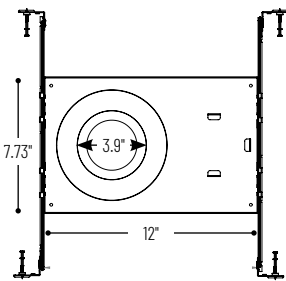
NEFLINTW-EW-4 4'
NEFLINTW-EW-20 20'
Used to extend the length between luminaire and pre-wired junction box.



Universal New Construction Frame-In
NF-R246
Universal new construction frame-in can be used to assist installing can-less recessed downlighting.



New Construction Frame-In with Collar
NFC-R430
New construction frame-in can be used to assist installing can-less recessed downlighting.



PHOTOMETRICS

4" E-Series FLIN Round LED Downlight with Selectable CCT

Type

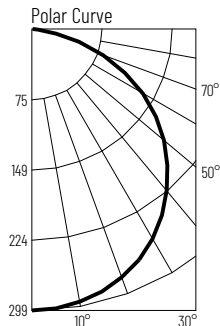
Project

Catalog No.

Notes

Test Information

Test Number: NTR1918R1
Part Number: NEFLINTW-R4MPW
Beam Spread: 115° Wide Flood
Lumens: 861lm
Wattage: 10.12W
Efficacy: 85lpw
CCT / CRI: 2700K / 90 CRI
Spacing Criteria (0°-180°): 1.28
Spacing Criteria (90°-270°): 1.28



Illuminance at a Distance

Distance from Luminaire	FC at Nadir	Beam Diameter
4'	18.7fc	12'-7"
6'	8.3fc	18'-10"
8'	4.7fc	25'-1"
10'	3fc	31'-5"
12'	2.1fc	37'-8"

Zonal Lumen Summary

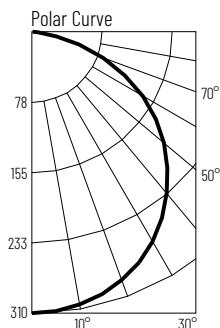
Zone	Lumens	% Luminaire
0-30	234	27.1
0-40	384	44.6
0-60	685	79.5
0-90	861	100
90-180	0	0
0-180	861	100

Candela Table

Vertical Angles	Candela
0	299
5	298
15	288
25	270
35	241
45	204

Test Information

Test Number: NTR1919R1
Part Number: NEFLINTW-R4MPW
Beam Spread: 115° Wide Flood
Lumens: 894lm
Wattage: 9.97W
Efficacy: 90lpw
CCT / CRI: 3000K / 90 CRI
Spacing Criteria (0°-180°): 1.28
Spacing Criteria (90°-270°): 1.28



Illuminance at a Distance

Distance from Luminaire	FC at Nadir	Beam Diameter
4'	19.4fc	12'-6"
6'	8.6fc	18'-10"
8'	4.9fc	25'-1"
10'	3.1fc	31'-5"
12'	2.2fc	37'-7"

Zonal Lumen Summary

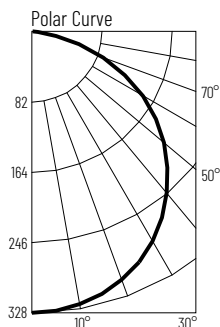
Zone	Lumens	% Luminaire
0-30	243	27.1
0-40	399	44.6
0-60	711	79.6
0-90	894	100
90-180	0	0
0-180	894	100

Candela Table

Vertical Angles	Candela
0	310
5	309
15	300
25	280
35	251
45	212

Test Information

Test Number: NTR1920R1
Part Number: NEFLINTW-R4MPW
Beam Spread: 115° Wide Flood
Lumens: 943lm
Wattage: 9.81W
Efficacy: 96lpw
CCT / CRI: 3500K / 90 CRI
Spacing Criteria (0°-180°): 1.28
Spacing Criteria (90°-270°): 1.28



Illuminance at a Distance

Distance from Luminaire	FC at Nadir	Beam Diameter
4'	20.5fc	12'-7"
6'	9.1fc	18'-10"
8'	5.1fc	25'-1"
10'	3.3fc	31'-5"
12'	2.3fc	37'-8"

Zonal Lumen Summary

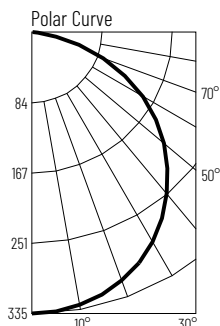
Zone	Lumens	% Luminaire
0-30	256	27.1
0-40	421	44.6
0-60	751	79.6
0-90	943	100
90-180	0	0
0-180	943	100

Candela Table

Vertical Angles	Candela
0	328
5	327
15	317
25	296
35	264
45	224

Test Information

Test Number: NTR1921R1
Part Number: NEFLINTW-R4MPW
Beam Spread: 115° Wide Flood
Lumens: 964lm
Wattage: 9.94W
Efficacy: 97lpw
CCT / CRI: 4000K / 90 CRI
Spacing Criteria (0°-180°): 1.28
Spacing Criteria (90°-270°): 1.28



Illuminance at a Distance

Distance from Luminaire	FC at Nadir	Beam Diameter
4'	20.9fc	12'-6"
6'	9.3fc	18'-10"
8'	5.2fc	25'-1"
10'	3.4fc	31'-5"
12'	2.3fc	37'-7"

Zonal Lumen Summary

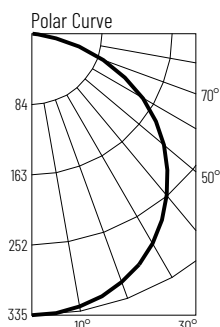
Zone	Lumens	% Luminaire
0-30	261	27.1
0-40	430	44.6
0-60	766	79.5
0-90	964	100
90-180	0	0
0-180	964	100

Candela Table

Vertical Angles	Candela
0	335
5	333
15	323
25	302
35	270
45	229

Test Information

Test Number: NTR1922R1
Part Number: NEFLINTW-R4MPW
Beam Spread: 115° Wide Flood
Lumens: 966lm
Wattage: 10.16W
Efficacy: 95lpw
CCT / CRI: 5000K / 90 CRI
Spacing Criteria (0°-180°): 1.28
Spacing Criteria (90°-270°): 1.28



Illuminance at a Distance

Distance from Luminaire	FC at Nadir	Beam Diameter
4'	21fc	12'-6"
6'	9.3fc	18'-10"
8'	5.2fc	25'-1"
10'	3.4fc	31'-5"
12'	2.3fc	37'-7"

Zonal Lumen Summary

Zone	Lumens	% Luminaire
0-30	216	22.4
0-40	361	37.4
0-60	746	77.2
0-90	966	100
90-180	0	0
0-180	966	100

Candela Table

Vertical Angles	Candela
0	335
5	334
15	323
25	302
35	270
45	229