

NFLIN-S407

4" Square FLIN High Lumen Recessed LED

Source: 12W

750lm

Type

Project

Catalog No.

Notes

PRODUCT DESCRIPTION

Thin recessed LED designed for easy installation into new construction or remodel applications. Luminaire includes a quick connect that allows the junction box to easily disconnect and mounted in the ceiling. Junction box measures under 2" for shallow plenum ceilings where access above the ceiling is limited.

FEATURES

- Thin construction measures under 2" height
- Special polymer lens
- IC Air-Tight rated
- Quick disconnect allows for easy installation
- Driver is potted for quiet dimming and cooler operation
- Triac or ELV dimming
- cULus Listed for Wet Locations
- 5-year limited warranty

SPECIFICATION

Construction: Thin die-cast aluminum construction measures 1.25" in height

Lens: Regressed lens with sharp baffle cuts reduces aperture brightness. Special polymer lens produces more usable light and lumens per watt.

Driver: Electronic potted driver for quiet dimming and cool operation.

Junction Box: Prewired junction box includes quick connect to LED fixtures for ease of installation. Junction box includes four knockouts and snap on cover with 22" connector length. Through branch circuit wiring, (2-in, 2-out).

Mounting: No housing is required, two tensions steel spring clips secure luminaires to the ceiling. Accepts ceiling thicknesses from 3/8" to 15/16" New construction frame-in kits are available, see accessories.

Minimum clearance: "IC" Insulated ceiling housings are direct contact rated; no minimum clearance is required. Air-tight gasket provided.

ELECTRICAL

Voltage: 120VAC

Lumens / Wattage: 750lm / 12W

Color Temperature: 2700K or 5000K

CRI: 90+CRI

Operating Temp.: 0°C to 40°C ambient temperature

Dimming: Dimmable down to 10% with Triac or ELV dimmer

[Click Here](#) or check complete dimmer list at www.NoraLighting.com in the "Compatibility" page under "Resources" tab

OPTIONAL ACCESSORIES

[NFP-S425-F](#): New Construction Frame-In for 4" Square

[NFLIN-EW-4](#): 4' Quick Connect Linkable Extension Cable

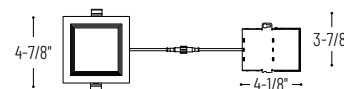
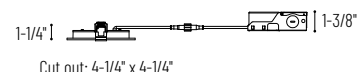
[NFLIN-EW-20](#): 20' Quick Connect Linkable Extension Cable

LABELS AND LISTINGS

- cULus Listed for Wet location
- ENERGY STAR certified
- Certified to the high efficacy requirements of California Title 24 JA8-2019
- [5-Year Limited Warranty](#)
- FCC Compliant



PRODUCT IMAGES AND DIMENSIONS



4" Square FLIN High Lumen Recessed LED

Size / Lumens / Wattage	CCT	Finish	Input Voltage / Dimming
NFLIN-S407 = 4" Square / 750lm / 12W	27 = 2700K 50 = 5000K	WW = White	LE3 = 120V; Triac/ELV dimming

Optional Accessories

Description
NFP-S425 = New Construction Frame-In for 4" Square
NFLIN-EW-4 = 4' Quick Connect Extension Cable
NFLIN-EW-20 = 20' Quick Connect Extension Cable

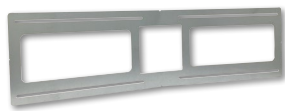
Example: **NFLIN-S40750WWLE3** = 4" Square FLIN, 750lm / 12W, 5000K, White finish, 120V input

4" Square FLIN High Lumen Recessed LED Accessories

Project

Catalog No.

Notes



NFP-S425

Square

For new construction pre-wiring and easier layout planning.



NFLIN-EW-4

4'

NFLIN-EW-20

20'

Used to extend the length between luminaire and pre-wired junction box.

